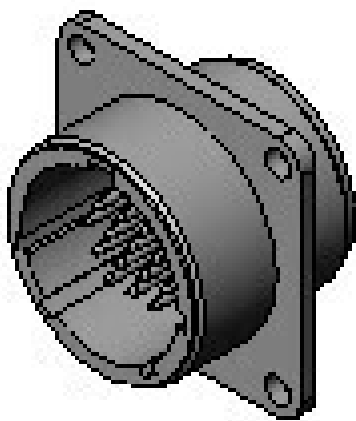


# SRCN2A21-16P

## Product Details



### Features

Conformed to JIS C 5432, UL approved, panel-to-cable/ cable-connecting, solder type, 16 pos., Panel mount receptacle

Part Number	SRCN2A21-16P
Status	Active
Number of Positions	16 pos.
Rated Current (A)	5 A
Rated Voltage (V)	
Waterproof/ Non-waterproof	Non-waterproof
Applications	Broadcasting/audio equipment,communication equipment,Computers and related equipment,Measuring equipment,vending machine,electronic entertainment equipment,Other various electronic and electrical equipment
Connector Type	Receptacle
Connector Style	Panel mount
Contact Type	Pin
Wire Termination Method	Soldering
Applicable Wire Size (AWG)	20 max.
Coupling Style	Threaded
Contact Size	#20
Shell Size	21

Contact Arrangement Code	21 - 16
Contact Size X No. of Contacts	#20*16
Applicable Wire (Cross-sectional Area of Conductor)	0.5 max.
Applicable Wire Insulation Diameter (mm)	
Alternative Insert Position (deg.)	0
Material of Contact	
Finish of Contact in Connecting Area	Silver plating
Outer Shell Color	Nickel plating
Total Current Rating (A)	
Contact Resistance (milliohm)	5 max.
Dielectric Withstanding Voltage (VACr.m.s. 1minute)	1,000
Insulation Resistance (megaohm min. )	1,000 megohm min.
Mating Cycles (times)	
Operating Temperature Range (deg. C)	-25 Deg. C to +85 Deg. C
Applicable Contacts	
Applicable Housing	
Applicable Accessory	
Applicable Product Part Numbers	
Applicable Wire Diameter	
RoHS compliant	10 substances (2011/65/EU, (EU)2015/863)
REACH compliant	
Combination	<a href="#">SRCN6A21-16S</a>
Remarks	

## Notice

1. The values specified in this web site are only for reference. The products and their specifications are subject to change without notice. Contact our sales staff for further information before considering or ordering any of our products.

For purchase, a product specification must be agreed upon.

2. Users are requested to provide protection circuits and redundancy circuits to ensure safety of the equipment, and sufficiently review the suitability of JAE's products to the equipment.

3. The products presented in this web site are designed for the uses recommended below.  
We strongly suggest you contact our sales staff when considering use of any of the products in any other way than the recommended applications or for a specific use that requires an extremely high reliability.

(1) Applications that require consultation:

- \* Please contact us if you are considering use involving a quality assurance program that you specify or that is peculiar to the industry, such as:

Automotive electrical components, train control, telecommunications devices (mainline), traffic light control, electric power, combustion control, fire prevention or security systems, disaster evention equipment, etc.

- \* We may separately give you our support with a quality assurance program that you specify, when you think of a use such as :

Aviation or space equipment, submarine repeaters, nuclear power control systems, medical equipment for life support, etc.

(2) Recommended applications include:

- \* Computers, office appliances, telecommunications devices (terminals, mobile units), measuring equipment, audiovisual equipment, home electric appliances, factory automation equipment, etc