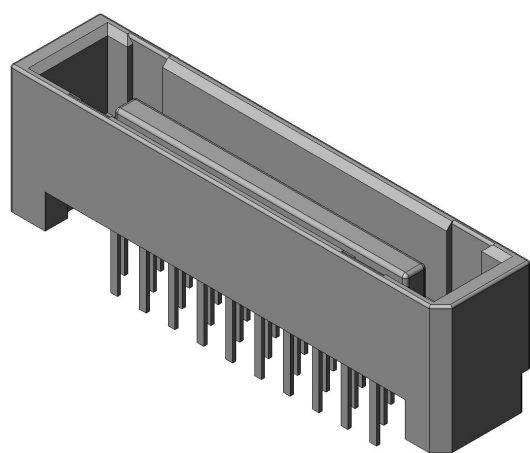


TX25-40P-8ST-N1E

Product Details



Features

Board-to-Board Connector, parallel/ vertical, 40 pos., 1.27mm pitch, Plug

| | |
|--|--------------------------------------|
| Part Number | TX25-40P-8ST-N1E |
| Status | Active |
| Number of Positions | 40 pos. |
| Contact Pitch (mm) | 1.27 mm |
| Rated Current (A) | 1 A |
| Connector Type | Plug |
| Connector Style | Straight |
| Number of Rows | 2 |
| PCB Mounting Method | Soldering (Through-hole) |
| Material of Contact | Copper alloy |
| Finish of Contact in Connecting Area | Gold plating over Nickel |
| Minimum Thickness of The Plating Contact Area (micrometer) | 0.1 |
| Finish of Contact in PCB Mounting Area | Tin or Tin-alloy plating over Nickel |

| | |
|--------------------------------------|---|
| Material of Insulator | Glass filled PBT |
| PCB Mounted Height (mm) | 11.2 mm |
| Existence of Polarization Key | available |
| Existence of Location Boss | not available |
| PCB Boardlock Feature | not available |
| Existence of Mounting Ears | not available |
| Mounting-side Contact Length (mm) | 2.8 |
| Operating Temperature Range (deg. C) | -40 deg. C to +80 deg. C |
| Applicable PCB Thickness (mm) | 1.6 |
| Through-hole Diameter (mm) | 0.8 |
| RoHS compliant | 10 substances (2011/65/EU, (EU)2015/863) |
| REACH compliant | |
| Combination | TX24-40R-6ST-N1E TX24-40R-LT-N1E TX24-40R-10ST-N1E TX24-40R-12ST-N1E |
| Remarks | |

Notice

1. The values specified in this web site are only for reference. The products and their specifications are subject to change without notice. Contact our sales staff for further information before considering or ordering any of our products.
For purchase, a product specification must be agreed upon.
2. Users are requested to provide protection circuits and redundancy circuits to ensure safety of the equipment, and sufficiently review the suitability of JAE's products to the equipment.
3. The products presented in this web site are designed for the uses recommended below.
We strongly suggest you contact our sales staff when considering use of any of the products in any other way than the recommended applications or for a specific use that requires an extremely high reliability.

(1) Applications that require consultation:

- * Please contact us if you are considering use involving a quality assurance program that you specify or that is peculiar to the industry, such as:

Automotive electrical components, train control, telecommunications devices (mainline), traffic light control, electric power, combustion control, fire prevention or security systems, disaster evention equipment, etc.

- * We may separately give you our support with a quality assurance program that you specify, when you think of a use such as :

Aviation or space equipment, submarine repeaters, nuclear power control systems, medical equipment for life support, etc.

(2) Recommended applications include:

- * Computers, office appliances, telecommunications devices (terminals, mobile units), measuring equipment, audiovisual equipment, home electric appliances, factory automation equipment, etc