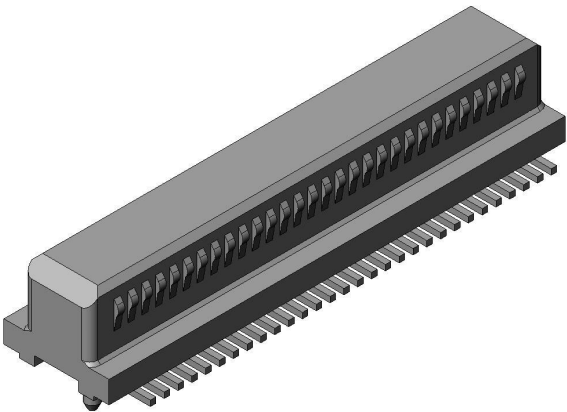


WR-60SB-VF-N1

Product Details



Features

0.5mm pitch, SMT, parallel, 60 pos., Receptacle

| | |
|--|--------------------------------|
| Part Number | WR-60SB-VF-N1 |
| Status | Active |
| Number of Positions | 60 pos. |
| Contact Pitch (mm) | 0.5 mm |
| Rated Current (A) | 0.3 A |
| Connector Type | Receptacle |
| Connector Style | Straight |
| Number of Rows | 2 |
| PCB Mounting Method | Soldering (SMT) |
| Material of Contact | Phosphor bronze |
| Finish of Contact in Connecting Area | Gold plating over Nickel |
| Minimum Thickness of The Plating Contact Area (micrometer) | 0.1 |
| Finish of Contact in PCB Mounting Area | Gold flash plating over Nickel |

* We may separately give you our support with a quality assurance program that you specify, when you think of a use such as :

Aviation or space equipment, submarine repeaters, nuclear power control systems, medical equipment for life support, etc.

(2) Recommended applications include:

* Computers, office appliances, telecommunications devices (terminals, mobile units), measuring equipment, audiovisual equipment, home electric appliances, factory automation equipment, etc