

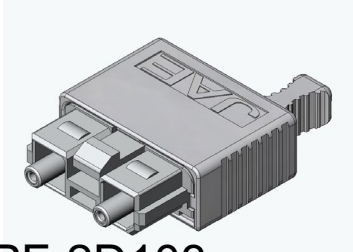


**PF/CF Series**  
**Easy Disconnection Type and**  
**Cable Connection Type**

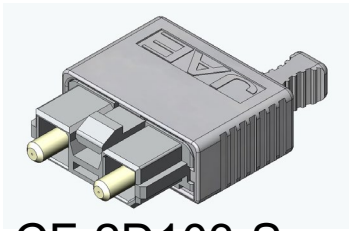
CONNECTOR  
MB-0130-3  
December 2008

**[Easy Disconnection Plug]**

**RoHS Compliant**

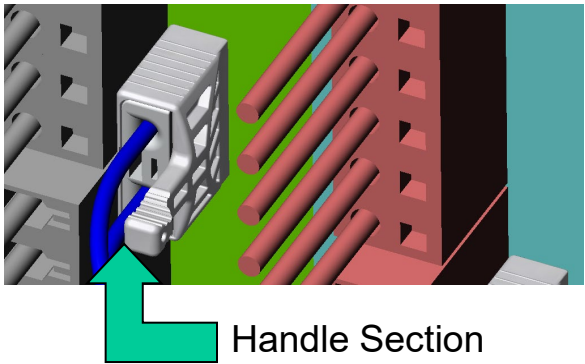


**PF-2D103**



**CF-2D103-S**

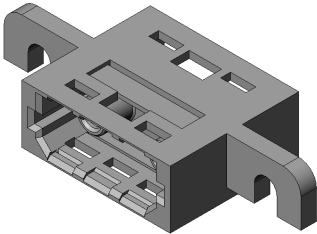
The new series enables you to operate mating/unmating easily, which is achieved by push-pull lock mechanism by just using the handle portion. It is quite suitable for space-limited application to save the handling space for the connectors.



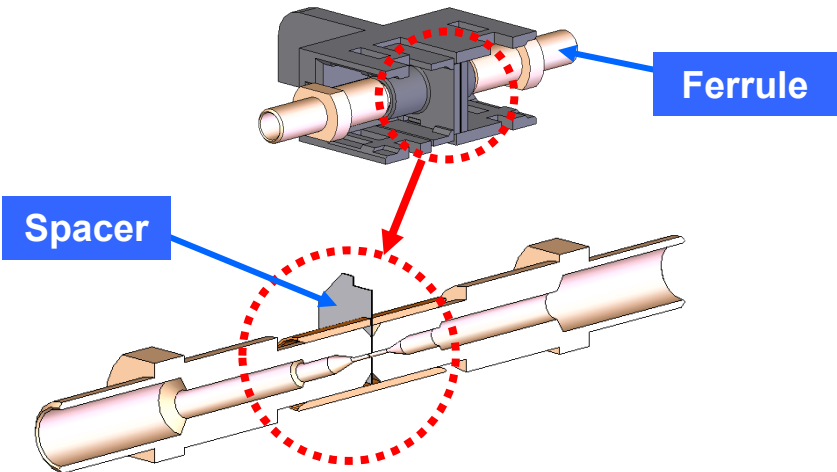
**Handle Section**

**[Cable Connection Adapter: CF-AD2]**

An adapter to be used in the relay area of CF Plug Harness.  
It is a product that prevents damage to fiber end caused by repeated mating with a spacer. Both ferrule ends retaining the fiber will not be exposed to each other.



**CF-AD2**



Features
----------

**[Easy Disconnection Plug: PF-2D2103, CF-2D103-S]**

- JIS C 5976 (F07 Type) [IEC 61754-16] compatible product
- Push-pull lock mechanism; mating/unmating is completed by just pushing/ pulling the handle section
- Easy, one-hand operation of mating/unmating by using the handle portion
- Available in plastic fibers (2 mm dia. APF: 980/1000) and plastic clad fibers (2mm dia. PCF cord, HPCF: 200/230)

**[Cable Connection Adapter: CF-AD2]**

- JIS C 5976 (F07 Type) [IEC 61754-16] compatible product (can be attached to same panel attachment hole.)
- Spacer type (ferrule ends do not contact with each other) product
- Environmental function equivalent to JIS C 5976 (F07 Type) [IEC 61754-16] compliant products

General Specifications
------------------------

**[Easy Disconnection Plug: PF-2D103, CF-2D103-S]**

- Insertion loss: 2.0 dB max. (when mated with F07 type relay adaptor)---Note1,2
- Operating temperature: -20 Deg. C to +70 Deg. C
- Durability: 500 times

Note1 Not including fiber transmission loss

Note2 Value for the cables assembled by JAE

**[Cable Connection Adapter: CF-AD2]**

- Insertion loss: 2.0 dB max. (when mated with JAE master cable)
- Operating temperature: -20 Deg. C to +70 Deg. C
- Durability: 500 times

Materials and Finishes

[Easy Disconnection Plug]: PF-2D103, CF-2D103-S]

Plastic Fiber (APF) Type  
Part Number: PF-2D103

Component	Material
Slide lever	Glass filled PBT
Housing	Glass filled PBT
Clamp	Glass filled PBT
Protection tube(to protect end face of ferrule )	Silicon rubber

Plastic Clad Fiber (PCF) Type  
Part Number: CF-2D103-S

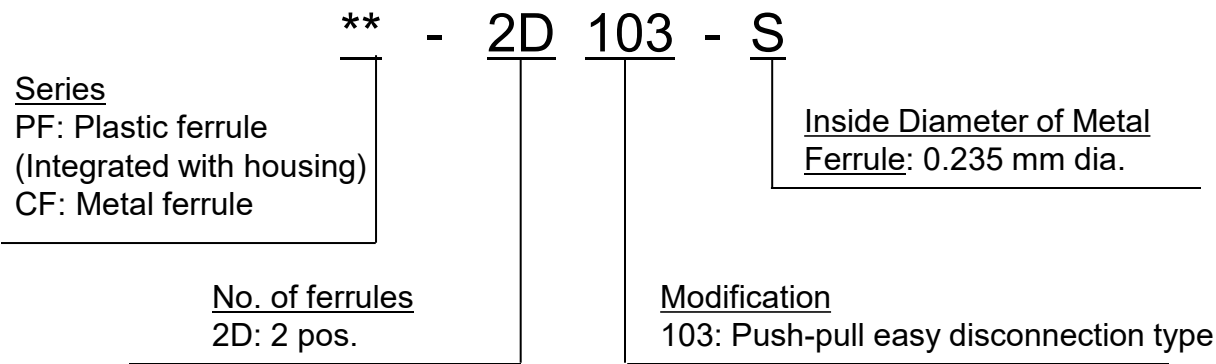
Component	Material
Slide lever	Glass filled PBT
Housing	Glass filled PBT
Stopper	Glass filled PBT
Ferrule	Copper alloy/ Ni plating
Spring	Stainless steel
Protection tube(to protect end face of ferrule )	Silicon rubber

[Cable Connection Adapter: CF-AD2]

Component	Material
Housing	Glass filled PPS
Sleeve	Brass (Ni plating)
Sleeve Holder	Glass filled PPS
Spacer	Stainless steel
Dust Cap	Nylon

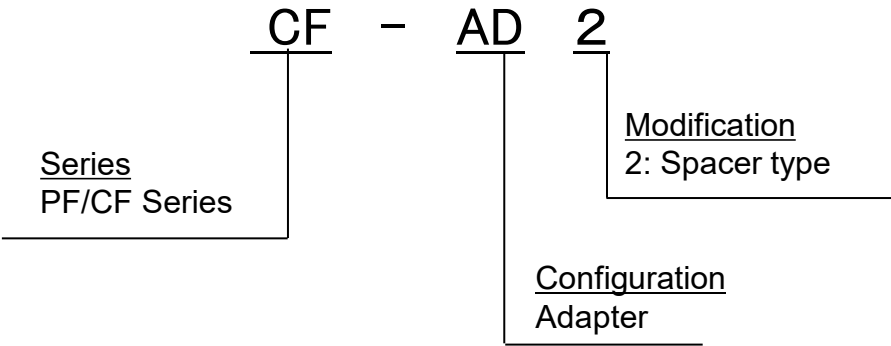
Ordering Information

[Easy Disconnection Plug: PF-2D103, CF-2D103-S]



Note 3 PF(plastic ferrule) type is applicable to plastic fiber (APF) only.

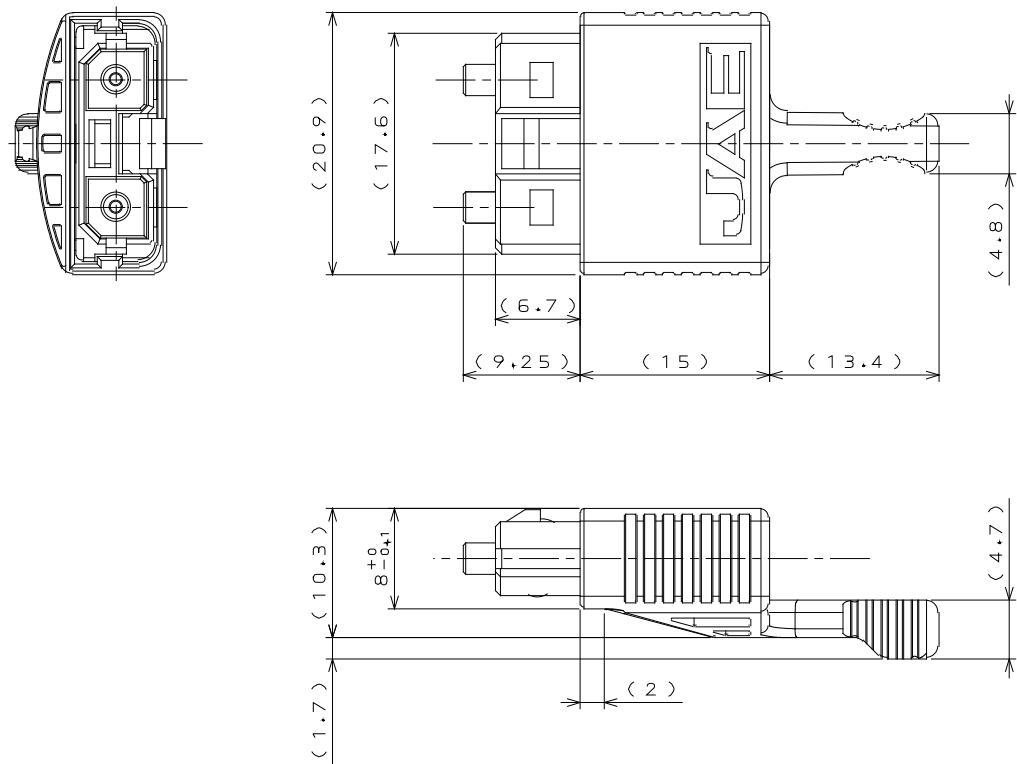
[Cable Connection Adapter: CF-AD2]



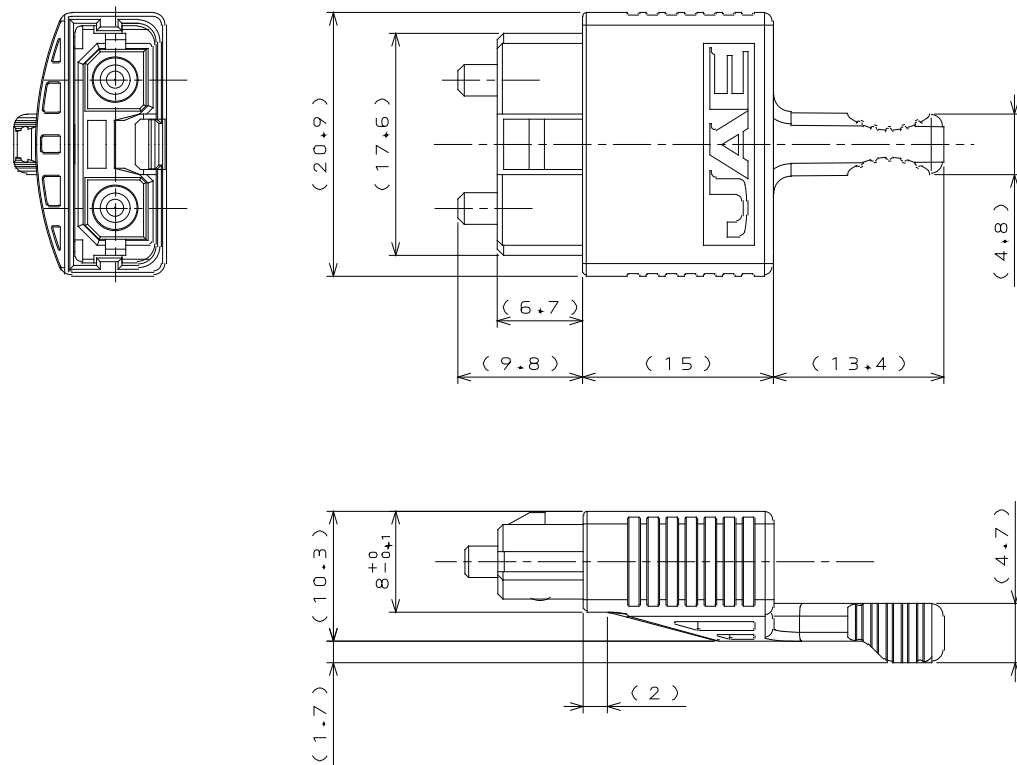
Outer Dimensions

[Easy Disconnection Plug: PF-2D103, CF-2D103-S]

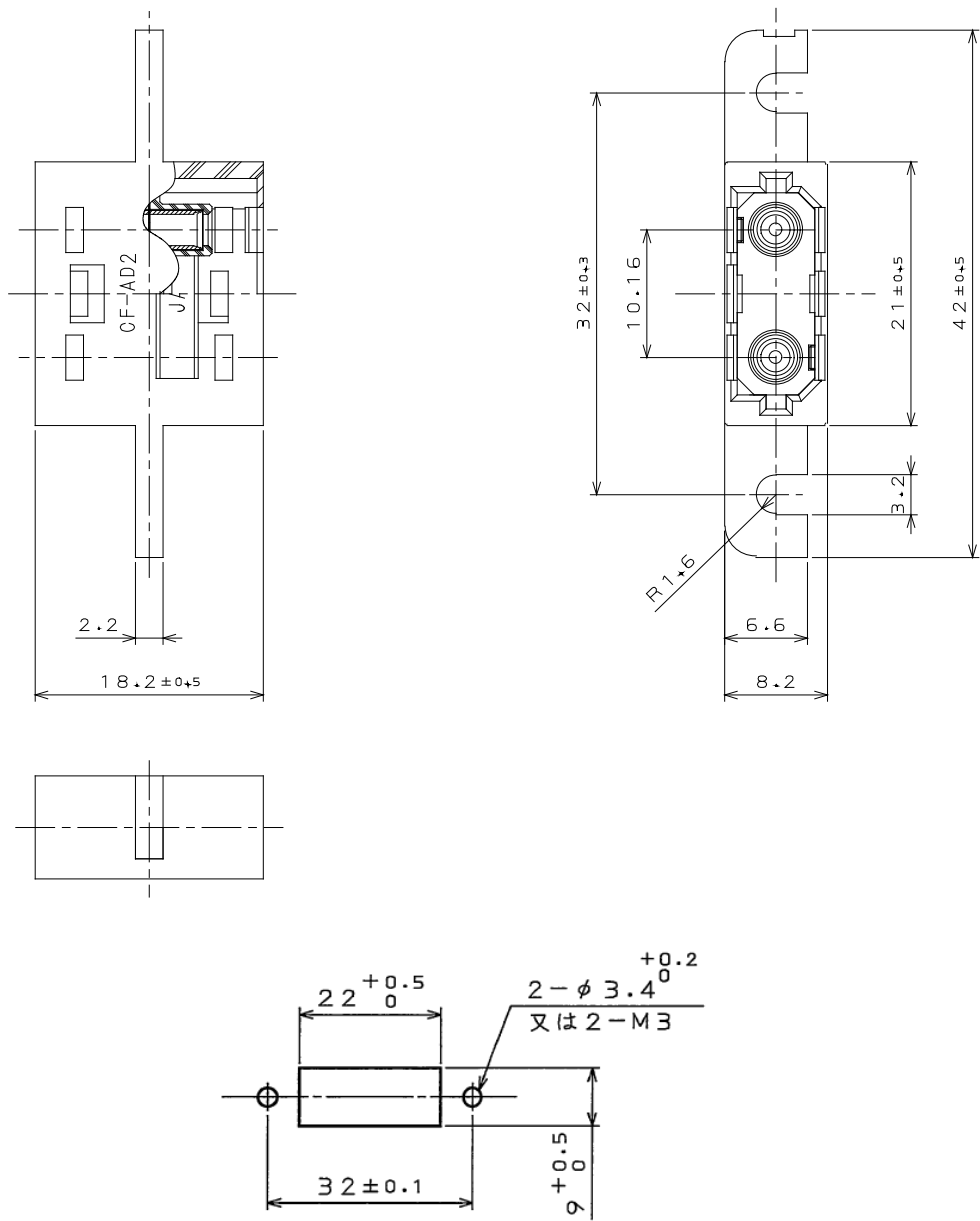
Part Number: PF-2D103



Part Number: CF-2D103-S



[Cable Connection Adapter: CF-AD2]



Recommended Panel Attachment Dimensions  
(for reference)

Technical References

- \*Please contact us concerning products other than the following.
- \*Please consult us concerning length and fiber type of cable assembly products.

[Easy Disconnection Plug: PF-2D103, CF-2D103-S]

Part Number	Drawing No.	Specification
PF-2D103	SJ101660	JACS-70019
CF-2D103-S	SJ101661	JACS-70020

[Cable Connection Adapter: CF-AD2]

Part Number	Drawing No.	Specification
CF-AD2	SJ108807	JACS-70069

Others

■Please refer to the chart below concerning combinations of cable connection adapters and plugs for PF/CF Series.

Cable Connection Adapter Part No.	Part Number of Relay Adaptor	
	Lever Lock Type (Note 4)	Push-pull Lock Type
CF-AD1 (Note 4)	CF-2D101-S-R	CF-2D103
CF-AD2	CF-2D101-S-R	CF-2D103
CF-AD1-P (Note 4)	CF-2D101-S-R	CF-2D103
	PF-2D101-R	PF-2D103-S

Note 4) These products are not in the PFCF catalogue.  
Please refer to our Optical connector catalogue for general information regarding these products

Japan Aviation Electronics Industry, Limited

Product Marketing Division  
Aobadai Building, 3-1-19, Aobadai, Meguro-ku, Tokyo 153-8539  
Phone: +81-3-3780-2787 FAX: +81-3-3780-2946

**Notice:** Products shown in this leaflet are made for the applications listed below. However, if the above-mentioned products are to be used in aerospace devices, marine cable-connection devices, atomic power control systems, medical equipment for life-support systems, or any other specific application requiring extremely high reliability, please contact JAE for further information.  
Recommended applications: Computers, Office machines, Measuring devices, Telecommunication devices (Terminals, Mobile devices), AV devices, Household applications, FA devices, etc.