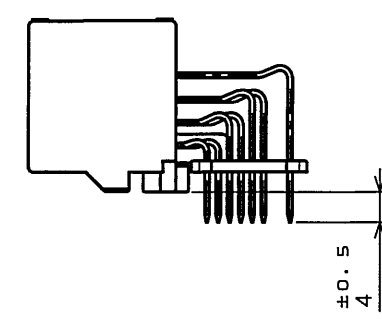
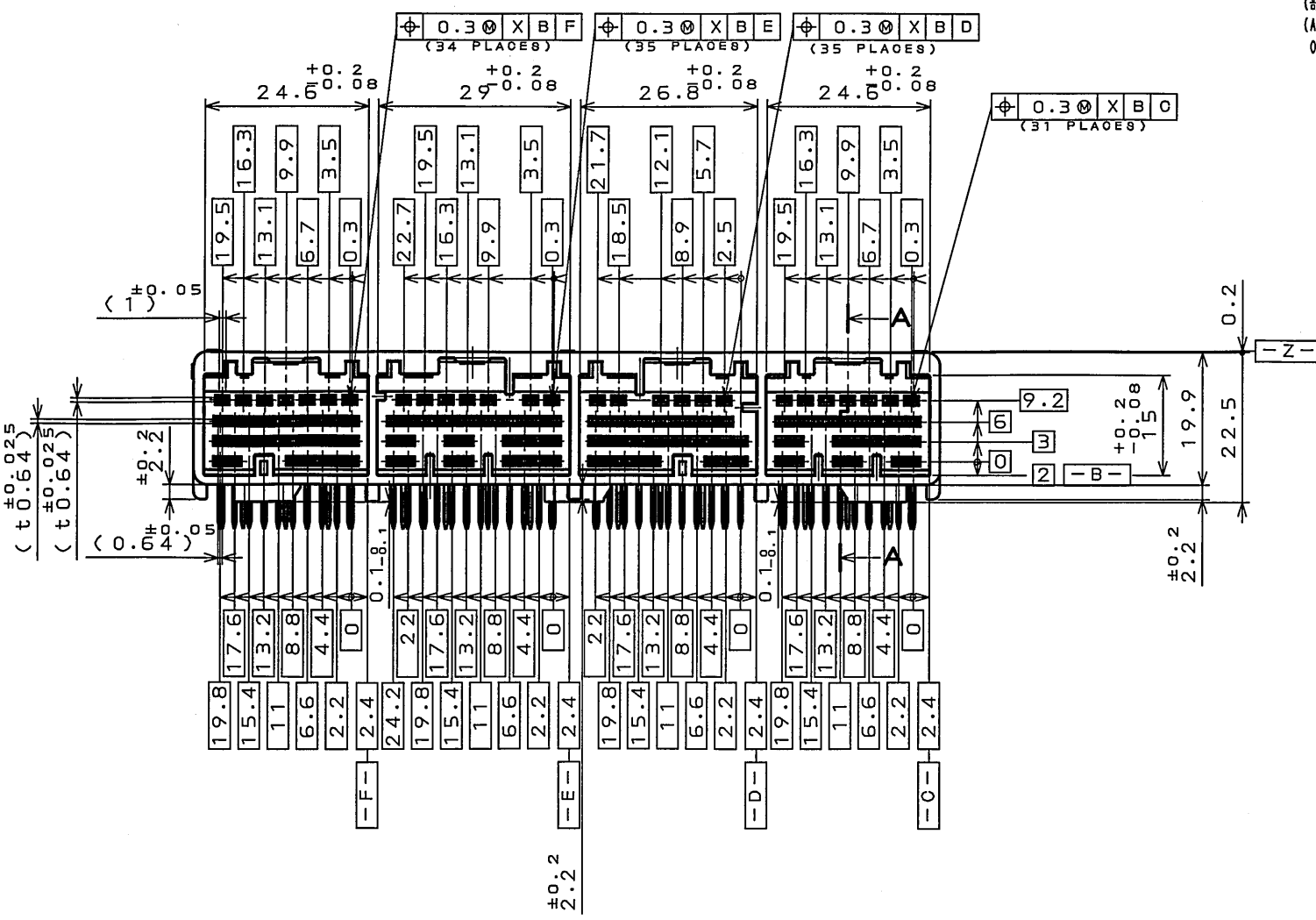
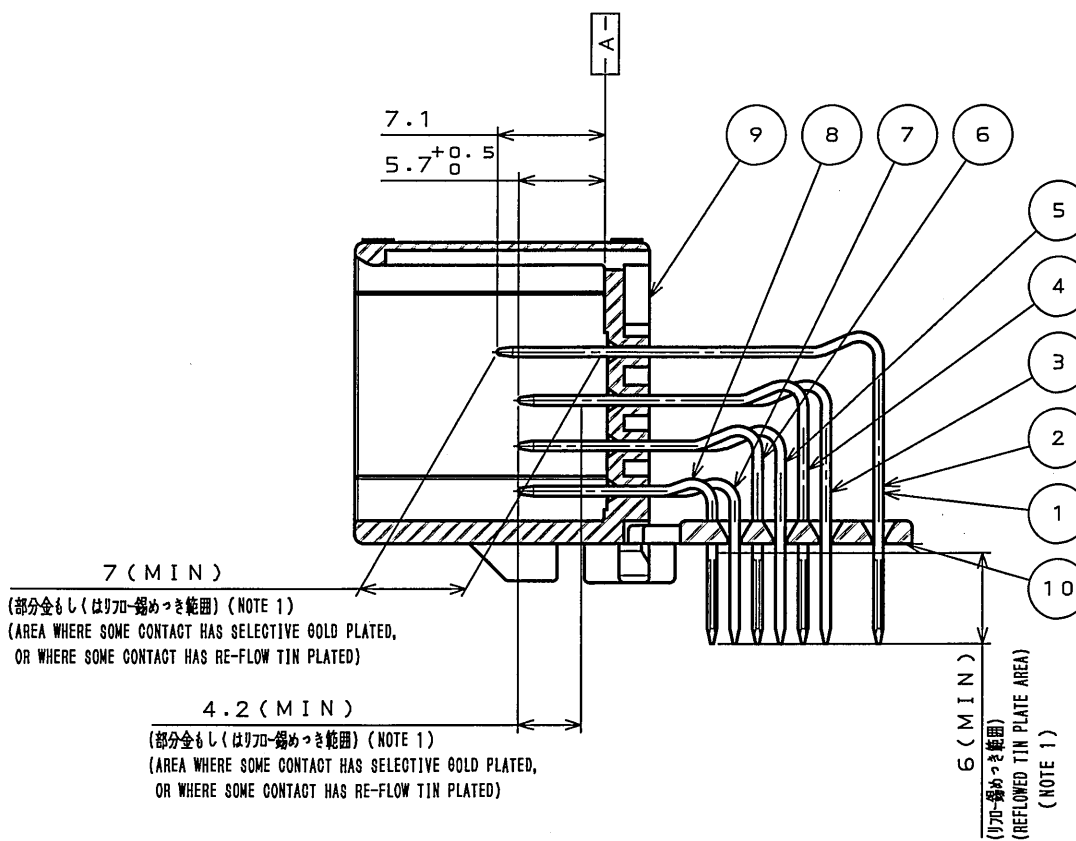
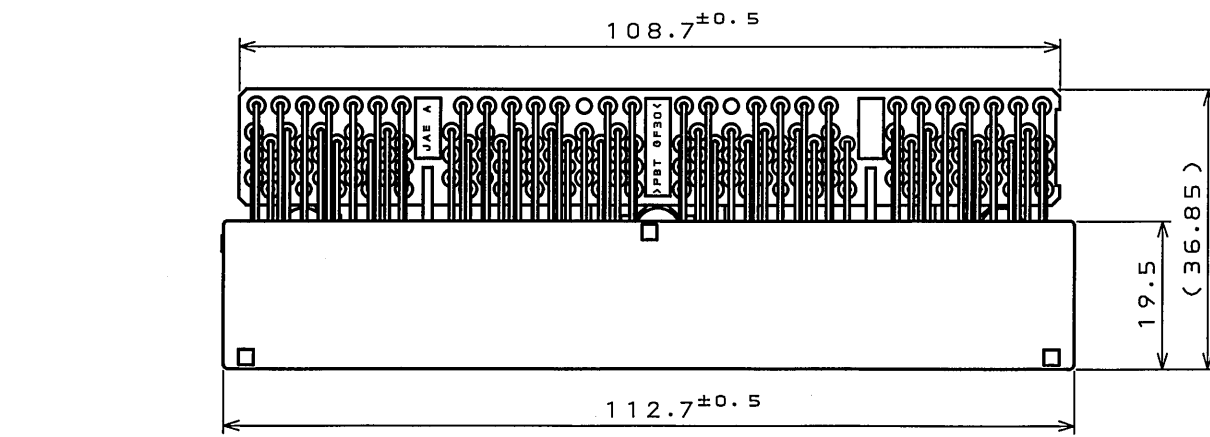


版数 REV.	年月日 DATE	DGN NO.	変更内容 DESCRIPTION	製図 DR.	担当 CHK.	査閲 APPD.	承認 APPD.

特別管理品目  
SPECIAL CONTROL ITEM  
MX(AUTO)

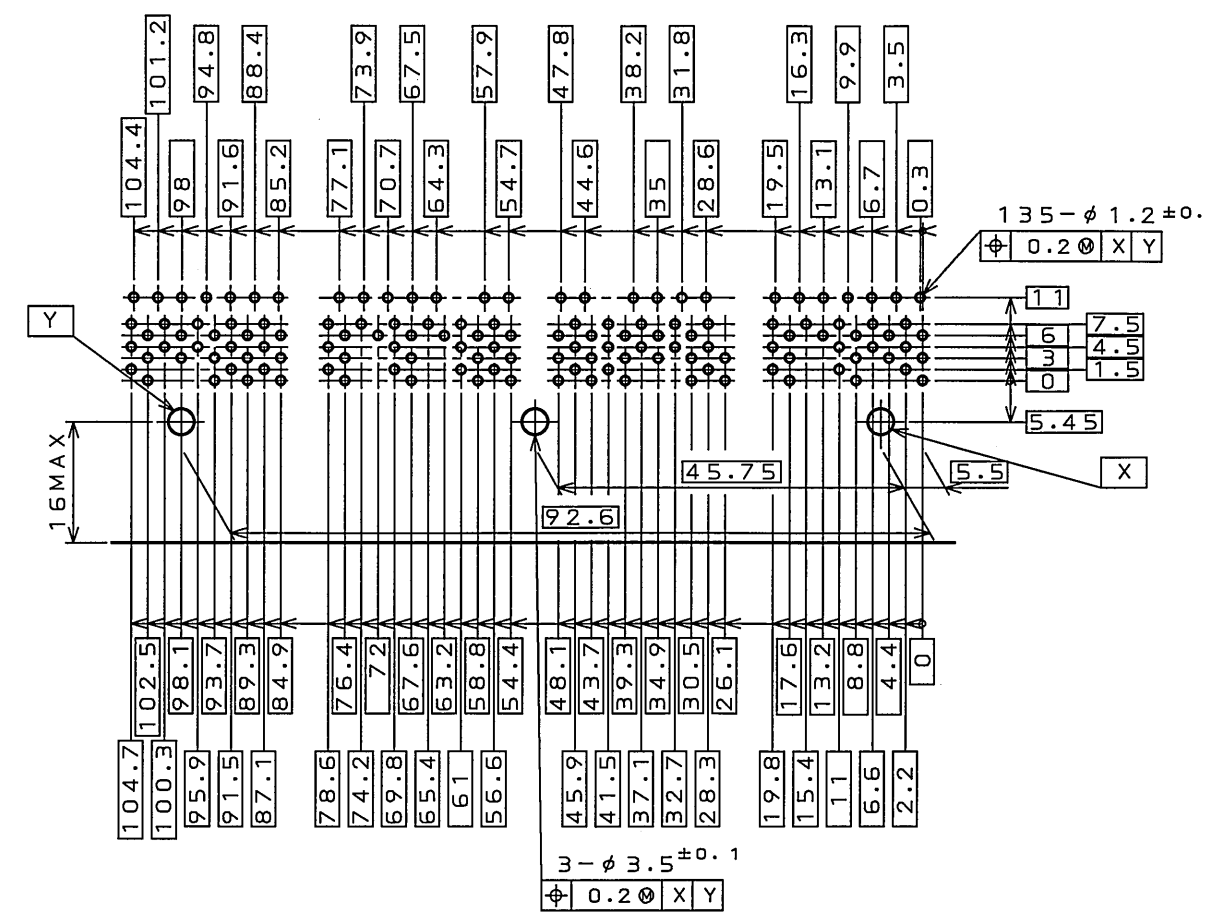
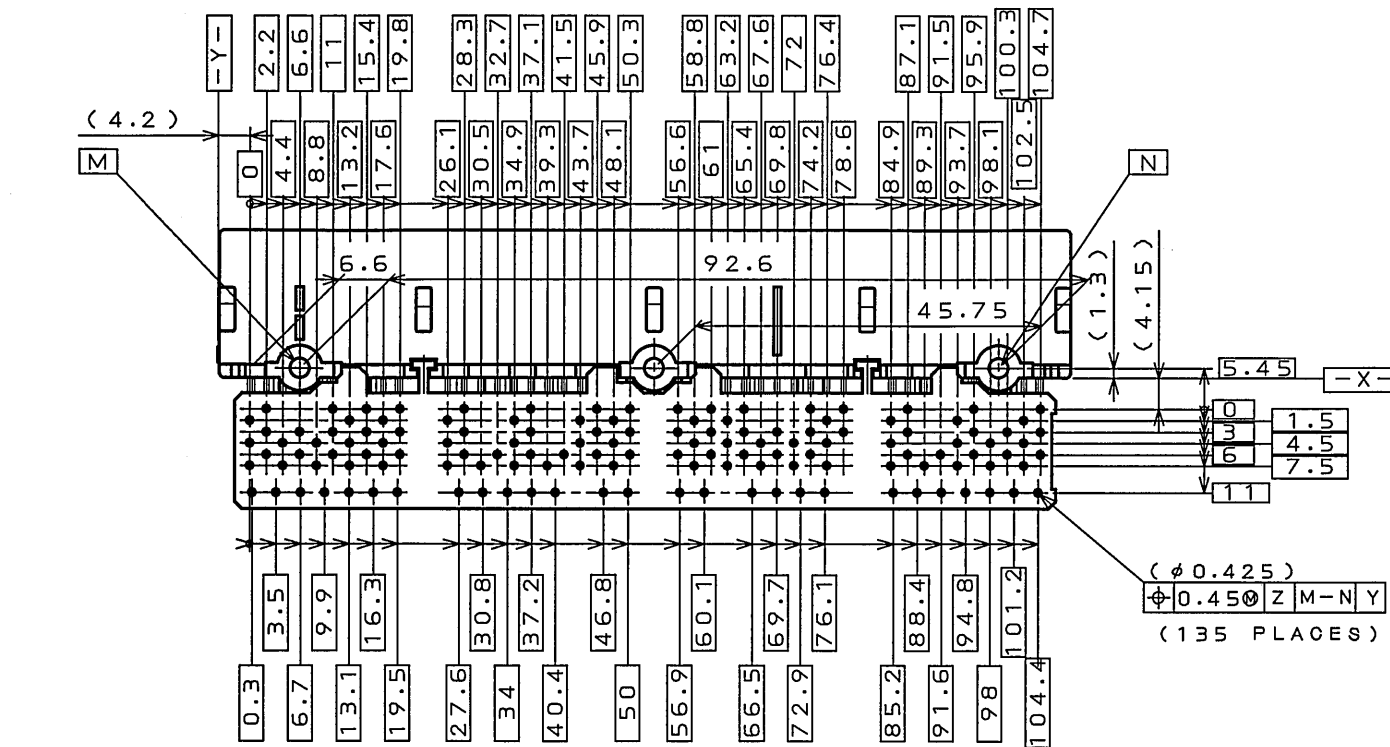


PART NUMBER IDENTIFICATION

当該製品の識別

PART NUMBER 品名	COLOR OF INSULATOR インシュレータ色相	KEY CONFIGURATION OF HOUSING AND TERMINAL PLATE ハウジングのキー形状 及び 端子めっき位置	DENOTES GOLD PLATED AREA, THE OTHER AREA IS TIN-PLATED 金めっき位置,他は錫めっき
MX31 135NQC	COLOR: GRAY		

- NOTE 1. THE SHEARED EDGES ARE ALSO PLATED .  
2. RECOMMENDED SET SCREW ON PC BOARD IS M3 X 6 TAPPING SCREW  
2ND CLASS OR 4TH CLASS OF JIS B 1115, OR 1122 OR 1123.  
注 1. 破断面にもめっき加工あり。  
2. 基板への推奨取付ネジは JIS B 1115, 1122 又は 1123 M3×6  
タッピンネジ 2 種又は 4 種とする。



APPLICABLE P.C.B. DIMENSION (REF.)  
適合基板寸法 (参考) (t=1.6)

10	LOCATOR	1	30%GF PBT		COLOR: WHITE (NATURAL)
9	MALE HOUSING	1	30%GF SPS		COLOR: GRAY
8	0.64 MALE TERMINAL (6)	16	BRASS	SELECTIVE GOLD OVER NICKEL ON MATING AREA, AND SELECTIVE RE-FLOW TIN PLATE OVER NICKEL ON THE TERMINAL AREA	NOTE 1
7	0.64 MALE TERMINAL (5)	13	BRASS	SELECTIVE GOLD OVER NICKEL ON MATING AREA, AND SELECTIVE RE-FLOW TIN PLATE OVER NICKEL ON THE TERMINAL AREA	NOTE 1
6	0.64 MALE TERMINAL (4)	19	BRASS	SELECTIVE GOLD OVER NICKEL ON MATING AREA, AND SELECTIVE RE-FLOW TIN PLATE OVER NICKEL ON THE TERMINAL AREA	NOTE 1
5	0.64 MALE TERMINAL (3)	18	BRASS	SELECTIVE GOLD OVER NICKEL ON MATING AREA, AND SELECTIVE RE-FLOW TIN PLATE OVER NICKEL ON THE TERMINAL AREA	NOTE 1
4	0.64 MALE TERMINAL (2)	21	BRASS	REFLOWED TIN PLATE	NOTE 1
3	0.64 MALE TERMINAL (1)	21	BRASS	REFLOWED TIN PLATE	NOTE 1
2	1.0 MALE TERMINAL (2)	2	BRASS	SELECTIVE GOLD OVER NICKEL ON MATING AREA, AND SELECTIVE RE-FLOW TIN PLATE OVER NICKEL ON THE TERMINAL AREA	NOTE 1
1	1.0 MALE TERMINAL (1)	25	BRASS	REFLOWED TIN PLATE	NOTE 1
符号 NO.	名称 DESCRIPTION	個数 QTY.	材料 MATERIAL	仕上 FINISH	備考 REMARKS
仕様書 (SPECIFICATION)	第1版 (ORIGINAL DATE) 23.Mar.2006	尺 (SCALE) 1:1	シリーズ (SERIES) MX31	日本航空電子工業株式会社 JAPAN AVIATION ELECTRONICS INDUSTRY, LTD.	図面番号 (DRAWING NO.) SJ106300
公差 (GENERAL TOLERANCE)	製図 DR.	名称 (TITLE) MX31135NQC (PIN HEADER)	質量 (MASS)		
寸法 (DIMENSION)	担当 CHK.				
角度 (ANGLES)	査閲 APPD.				
±0.3	承認 APPD.				
×° ±					
×× ±0.3					
××× ±					