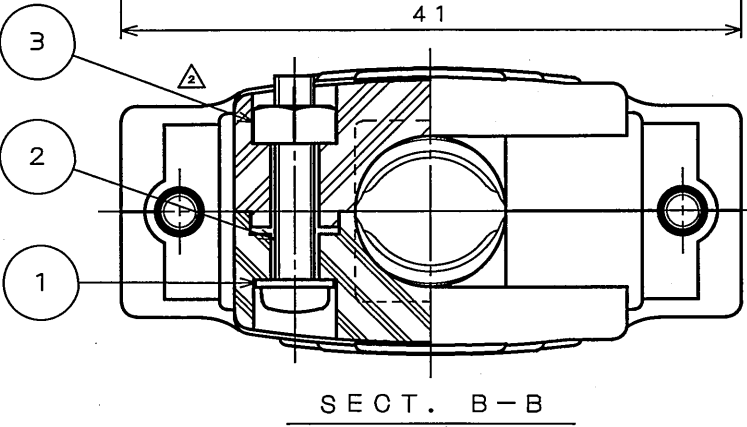
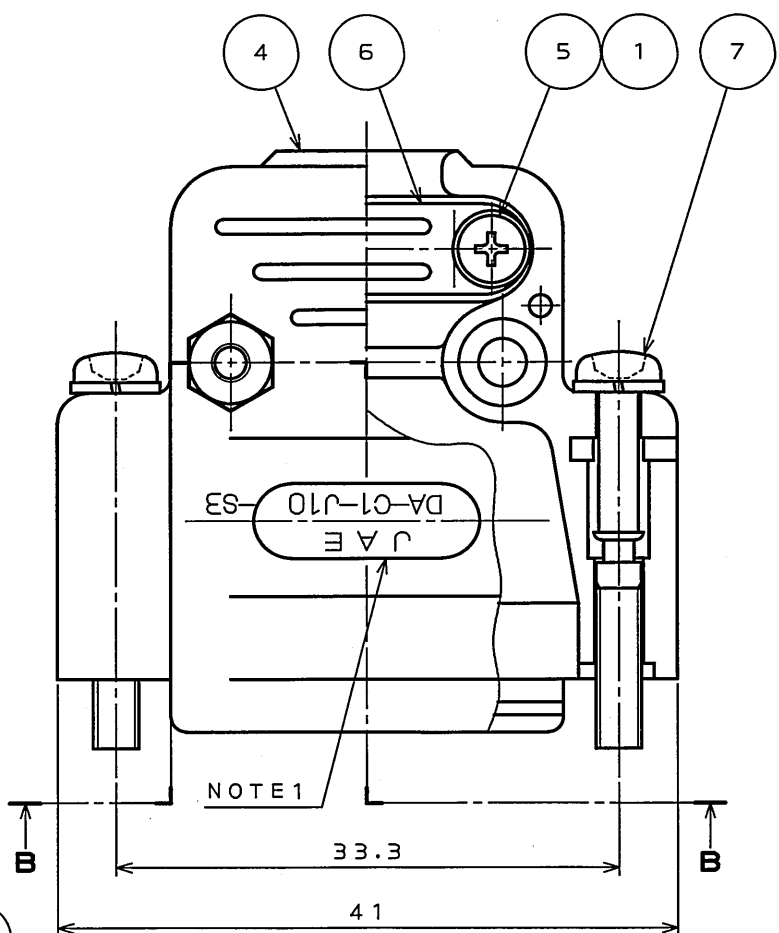
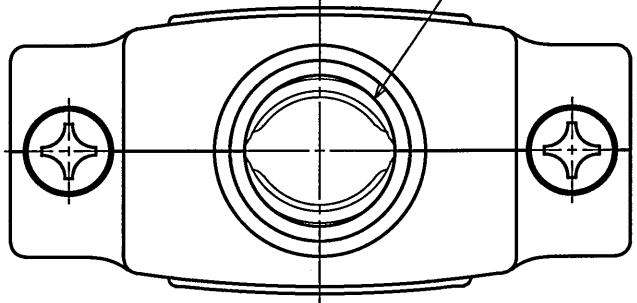


0E61019S
(ON 0NIMVHD)台番図

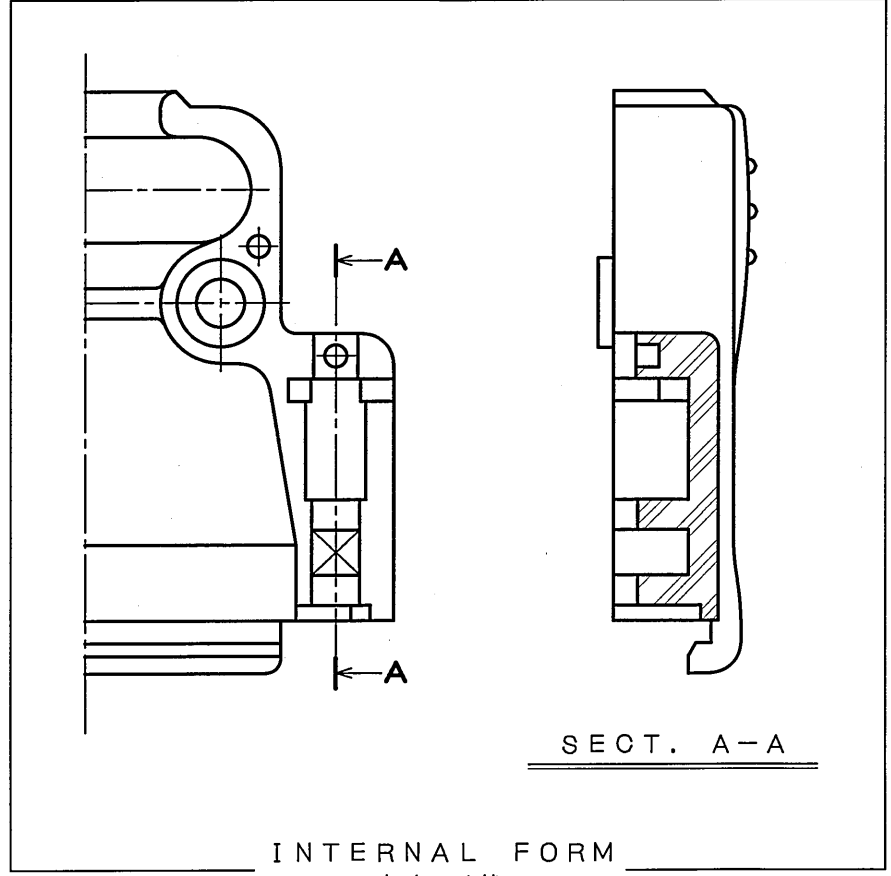
△ φ10MAX CABLE ENTRY
使用ケーブル最大径φ10



NOTE1. MARK THE COMPANY NAME AND ABBREVIATED PART NUMBER AT THE LOCATION SHOWN IN THE DRAWING.

注1.図示の位置に社名及び品名略称を表示する。

版数 REV.	年月日 DATE	DCN NO.	変更内容 DESCRIPTION	製図 DR.	担当 CHK.	査閲 APPD.	承認 APPD.
2	10.Apr.2006	059841	CORRECT AN ERROR		Y.TAKAGI	A. Tago	J. Kubota



DA-15※
FIXED CONNECTOR(REF)
コネクタ適用例

7	SCREW LOCK ASS'Y	SCREW	2	STEEL	HEXAVALENT CHROMIUM FREE CHROMATE (TRIVALENT CHROMATE TREATMENT) ON ELECTROPLATED ZINC	M3
		SPRING WASHER	2	STEEL	HEXAVALENT CHROMIUM FREE CHROMATE (TRIVALENT CHROMATE TREATMENT) ON ELECTROPLATED ZINC	
6	CLAMP SADDLE		2	STEEL	HEXAVALENT CHROMIUM FREE CHROMATE (TRIVALENT CHROMATE TREATMENT) ON ELECTROPLATED ZINC	
5	CROSS PAN HEAD SCREW		2	STEEL	HEXAVALENT CHROMIUM FREE CHROMATE (TRIVALENT CHROMATE TREATMENT) ON ELECTROPLATED ZINC	M2.6×7
4	HOOD		2	ABS RESIN	(COLOR:LIGHT GREY)	
3	HEXAGON NUT		2	COPPER ALLOY △	HEXAVALENT CHROMIUM FREE CHROMATE (TRIVALENT CHROMATE TREATMENT) ON ELECTROPLATED ZINC	M2.6
2	CROSS PAN HEAD SCREW		2	STEEL	HEXAVALENT CHROMIUM FREE CHROMATE (TRIVALENT CHROMATE TREATMENT) ON ELECTROPLATED ZINC	M2.6×14
1	SPRING WASHER		4	STEEL	HEXAVALENT CHROMIUM FREE CHROMATE (TRIVALENT CHROMATE TREATMENT) ON ELECTROPLATED ZINC	M2.6
符 号 NO.	名 称 DESCRIPTION	個 数 QTY.	材 料 MATERIAL	仕 上 FINISH	備 考 REMARKS	
仕様書 (SPECIFICATION)		第1版 (ORIGINAL DATE) 15.Sep.2005		尺 度 (SCALE) 2: 1	シ リーズ (SERIES) D-sub	日本航空電子工業株式会社 JAPAN AVIATION ELECTRONICS INDUSTRY, LTD.
一般公差 (GENERAL TOLERANCE)		製 図 DR.		名 称 (TITLE) DA-C1-J10-S3R		
寸 法 (DIMENSION)		担 当 CHK.	Y.TAKAGI	査 閲 APPD.		
角 度 (ANGLES)		承認 APPD.	Y.KUBOTA	質 量 (MASS)		
. ± 1		×° ±		図 面 番 号 (DRAWING NO.)		
.X ± 0.5		×°X ±		SJ101930		
.XX ±						
.XXX ±						