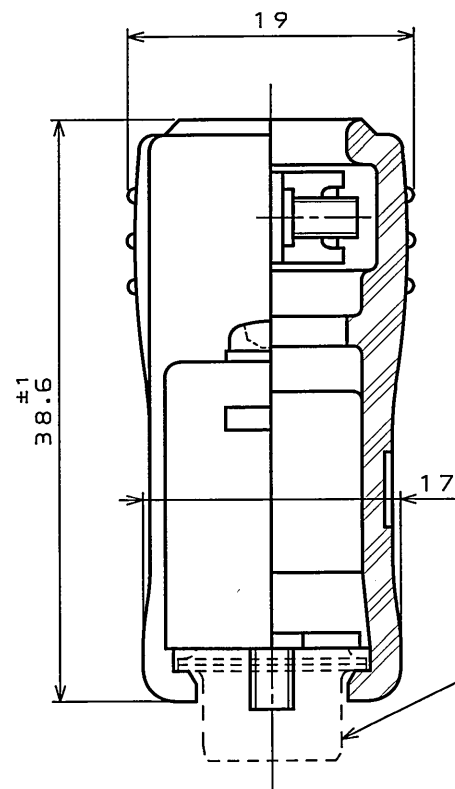
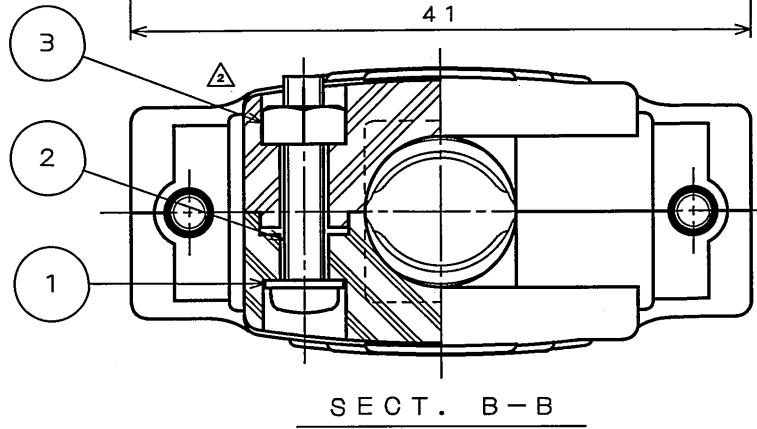
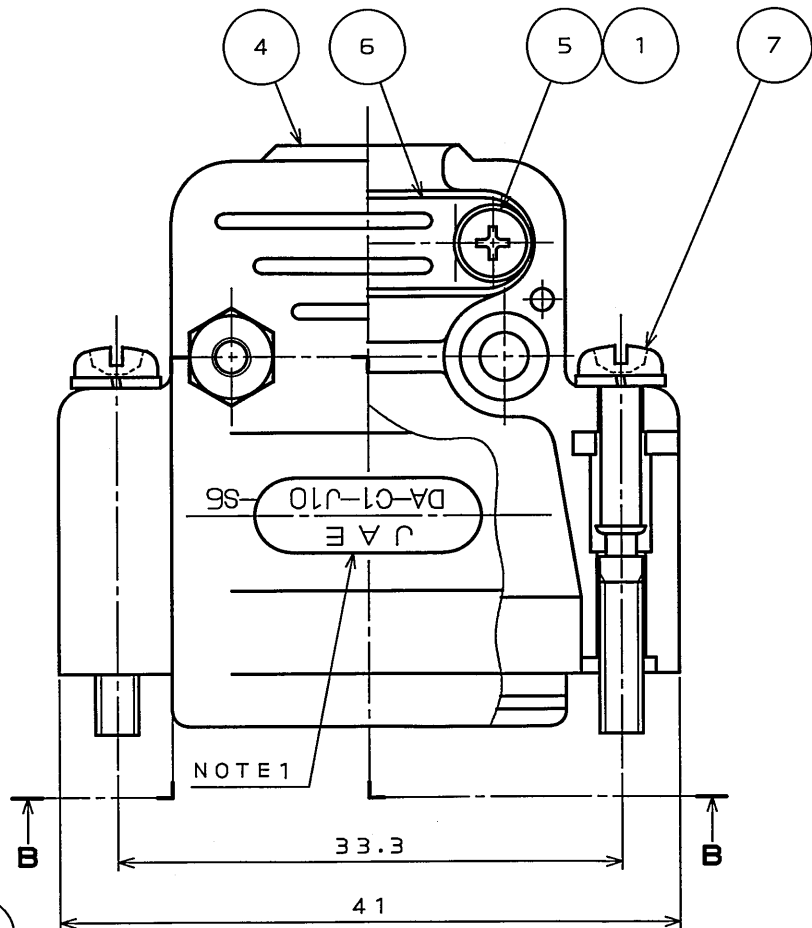
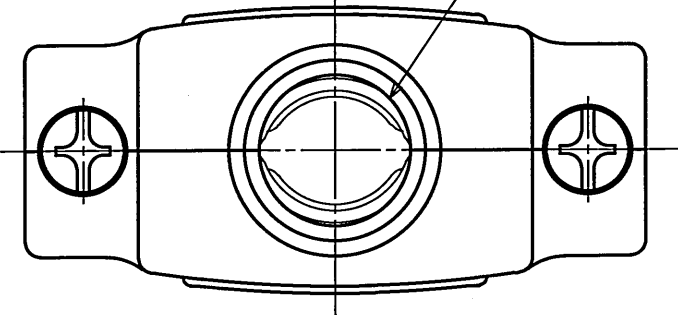
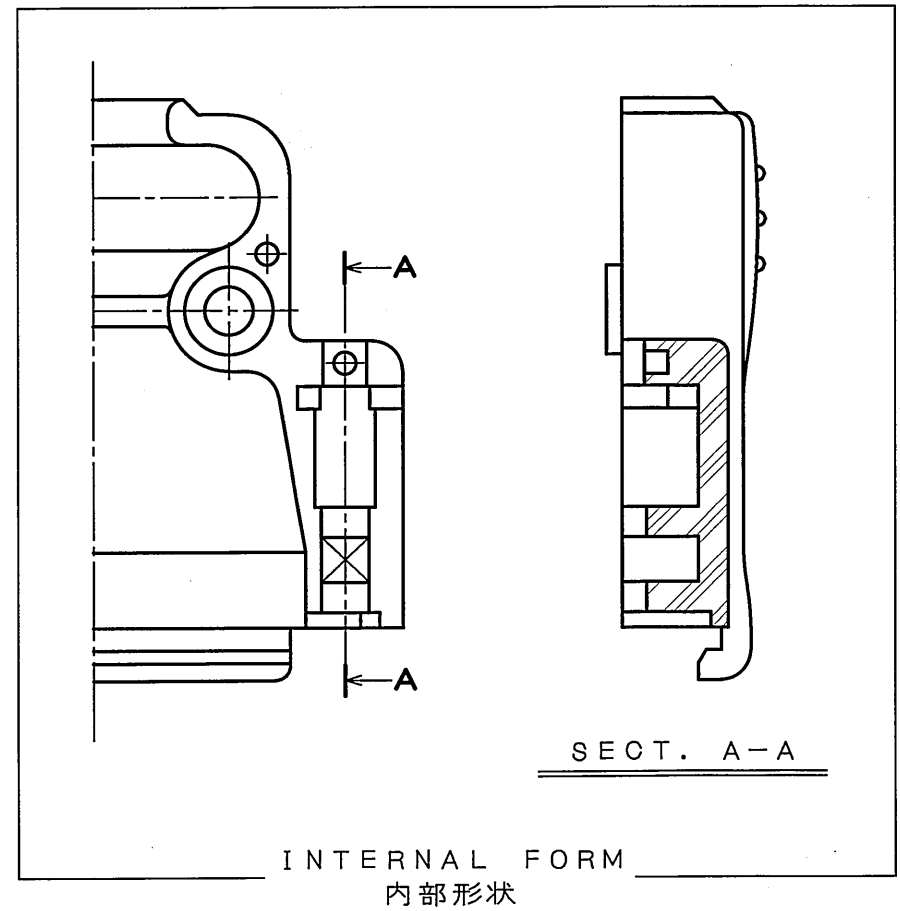


7E6101RS  
(ON 0NIMVHD)台要里図

△φ10MAX CABLE ENTRY  
使用ケーブル最大径φ10



DA-15※  
FIXED CONNECTOR(REF)  
コネクタ適用例



INTERNAL FORM  
内部形状

版数 REV.	年月日 DATE	DCN NO.	変更内容 DESCRIPTION	製図 DR.	担当 CHK.	査閲 APPD.	承認 APPD.
2	10.Apr.2006	059841	CORRECT AN ERROR		Y.TAKAGI	R. Sago	J. Kubota

7	SCREW LOCK ASS'Y	SCREW	2	STEEL	HEXAVALENT CHROMIUM FREE CHROMATE(TRIVALENT CHROMATE TREATMENT)ON ELECTROPLATED ZINC	#4-40UNC
		SPRING WASHER	2	STEEL	HEXAVALENT CHROMIUM FREE CHROMATE(TRIVALENT CHROMATE TREATMENT)ON ELECTROPLATED ZINC	
6	CLAMP SADDLE		2	STEEL	HEXAVALENT CHROMIUM FREE CHROMATE(TRIVALENT CHROMATE TREATMENT)ON ELECTROPLATED ZINC	
5	CROSS PAN HEAD SCREW		2	STEEL	HEXAVALENT CHROMIUM FREE CHROMATE(TRIVALENT CHROMATE TREATMENT)ON ELECTROPLATED ZINC	M2.6×7
4	HOOD		2	ABS RESIN	(COLOR:LIGHT GREY)	
3	HEXAGON NUT		2	COPPER ALLOY △	HEXAVALENT CHROMIUM FREE CHROMATE(TRIVALENT CHROMATE TREATMENT)ON ELECTROPLATED ZINC	M2.6
2	CROSS PAN HEAD SCREW		2	STEEL	HEXAVALENT CHROMIUM FREE CHROMATE(TRIVALENT CHROMATE TREATMENT)ON ELECTROPLATED ZINC	M2.6×14
1	SPRING WASHER		4	STEEL	HEXAVALENT CHROMIUM FREE CHROMATE(TRIVALENT CHROMATE TREATMENT)ON ELECTROPLATED ZINC	M2.6
符号 NO.	名称 DESCRIPTION	個数 QTY.	材料 MATERIAL	仕上 FINISH	備考 REMARKS	

仕様書(SPECIFICATION)	第1版(ORIGINAL DATE) 15.Sep.2005	尺度(SCALE) 2:1	シリーズ(SERIES) D-sub	日本航空電子工業株式会社 JAPAN AVIATION ELECTRONICS INDUSTRY, LTD.
一般公差(GENERAL TOLERANCE)	製図 DR.	名称(TITLE) DA-C1-J10-S6R		
寸法(DIMENSION)	担当 CHK. Y.TAKAGI			
角度(ANGLES)	査閲 APPD.			
±1	承認 APPD. Y.KUBOTA			
× ±0.5				
×× ±				
××× ±				
		質量(MASS)		図面番号(DRAWING NO.) SJ101934

NOTE1. MARK THE COMPANY NAME AND ABBREVIATED PART NUMBER AT THE LOCATION SHOWN IN THE DRAWING.

注1.図示の位置に社名及び品名略称を表示する。