

NEW



D-sub Series Junction Shell (EMI Countermeasure Type)

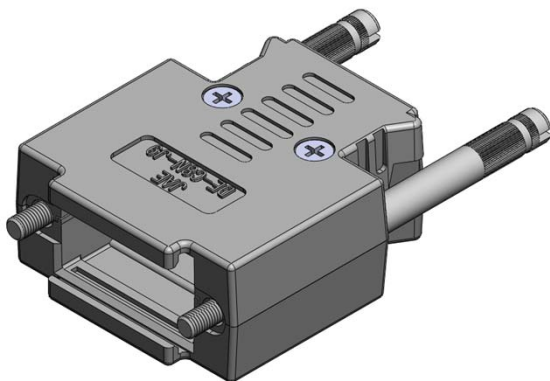
CONNECTOR

MB-0280-3

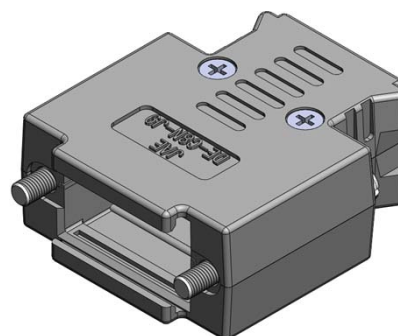
March 2016

C8N Series

RoHS Compliant



Long Thumbscrew Type



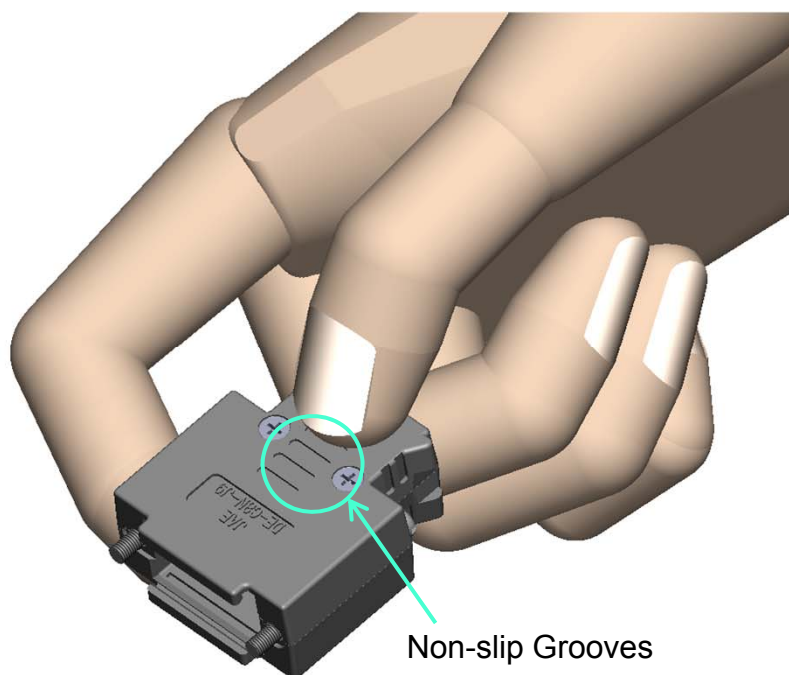
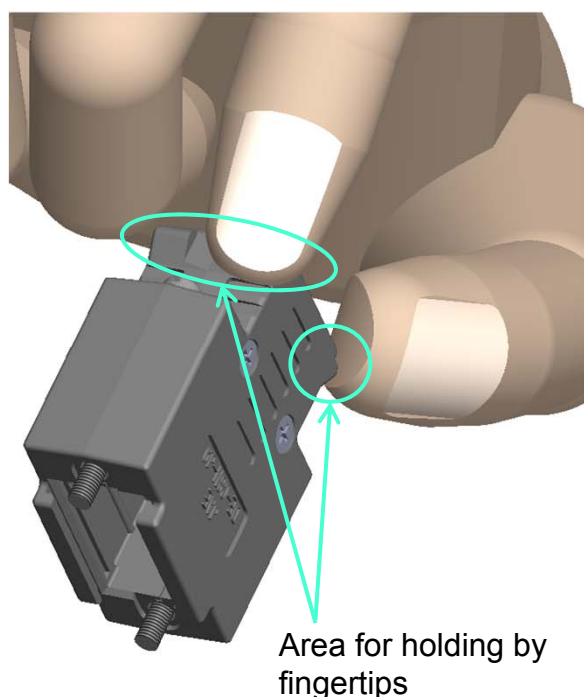
Short Screw Type

Note) Above model is of the DE type.

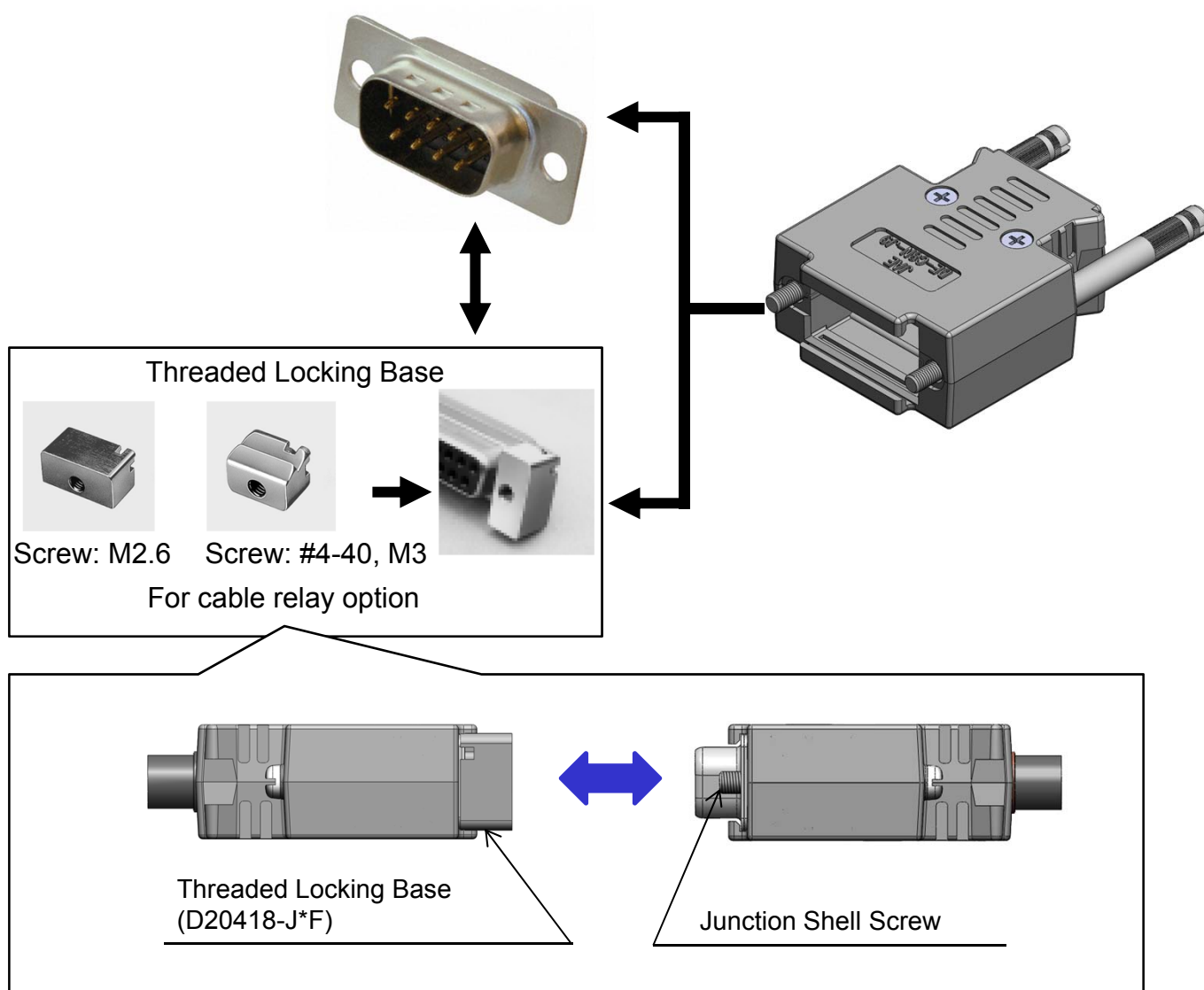
To comply with the miniaturization of devices, JAE has developed a new junction shell type to add to our Electro-Magnetic Interference (EMI) countermeasure type D-sub Series. The compact design is ideal to be used in areas where our previous junction shell (C8 Series) could not be accessed due to space limitation of mounting and insertion/removal process.

Features

- Compact outer dimensions, ideal for interface with devices requiring high-density mounting.
- Embedding the nut into the hood largely reduces handling time and effort while improving harness assembly operation.
- Ideal for cable relay connection.
- The new design considers finger ergonomics attaching and detaching.



Product Combinations



Applicable Products

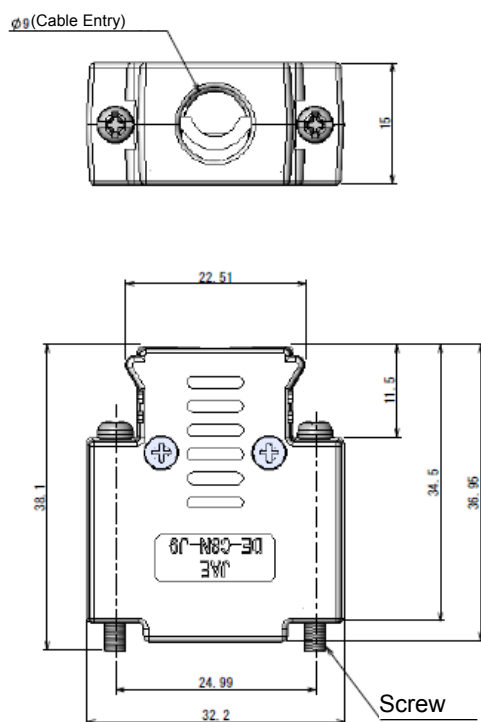
	D-sub Connector (EMI Countermeasure Type)		
Series	D*-F-N (Excluding DD size)	D*U-F (Excluding DD size)	D02-M15 (DE size only)
Termination Method	Soldering	Crimping	Crimping (High-density type)
Contact	Press-fit Contact	Press-fit Contact / Machined Contact	Press-fit Contact / Machined Contact
	Threaded Locking Base		
Part Number	D20418-J7F	D20418-J9F	D20418-J5F
Screw	M2.6	#4-40	M3

When using connectors as a cable relay, first mount the threaded locking base tightly using the screw on the C8N hood attached to one of the connectors (above left drawing), then screw the thumbscrew of the opposing connector (above right drawing) to the threaded locking base attached to the initial connector.

Dimensions

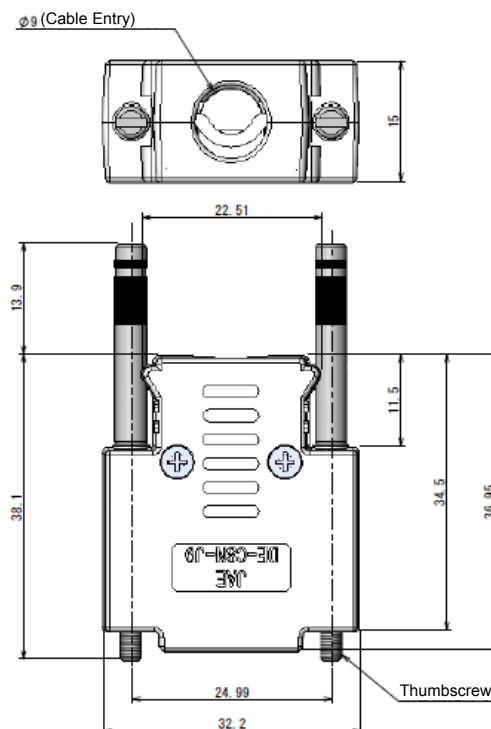
1. DE Size

Short Screw Type



Part Number	Screw Specification	Cable Requirement	
		φmin.	φmax.
DE-C8N-J9-F1-1RN	M2.6 Short Type	7	9
DE-C8N-J9-F2-1RN	#4-40 Short Type		
DE-C8N-J9-F3-1RN	M3 Short Type		

Long Screw Type



Part Number	Thumbscrew Specification	Cable Requirement	
		φmin.	φmax.
DE-C8N-J9-F4-1RN	M2.6 Long Type	7	9
DE-C8N-J9-F5-1RN	#4-40 Long Type		
DE-C8N-J9-F6-1RN	M3 Long Type		

Precautions when considering C8N Type

1. When considering machine contact (#18-20)

030-1954-000 (pin contact), 030-1955-000 (socket contact):

Using applicable cable size #18 or two lines of #20, approximately 7mm of contact end will protrude from the back side of the insulator when the contact is attached to the main connector unit.

In some cases it may be possible to not have the harnessed cable stored inside the hood due to design emphasizing compactness.

For details please refer to the Product Handling Instructions (JAHL-30347) and Handling Instructions for Crimp type connector (T73-13)

2. Packaging Specifications

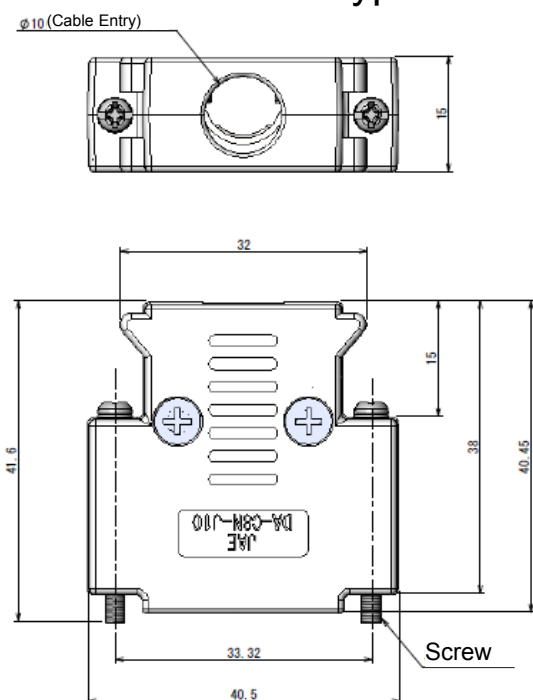
DE, DA, DB, DC sizes are offered in tray and individual packaging (linked bag packaging).

We recommend tray packaging when delivery deadline is critical.

Dimensions

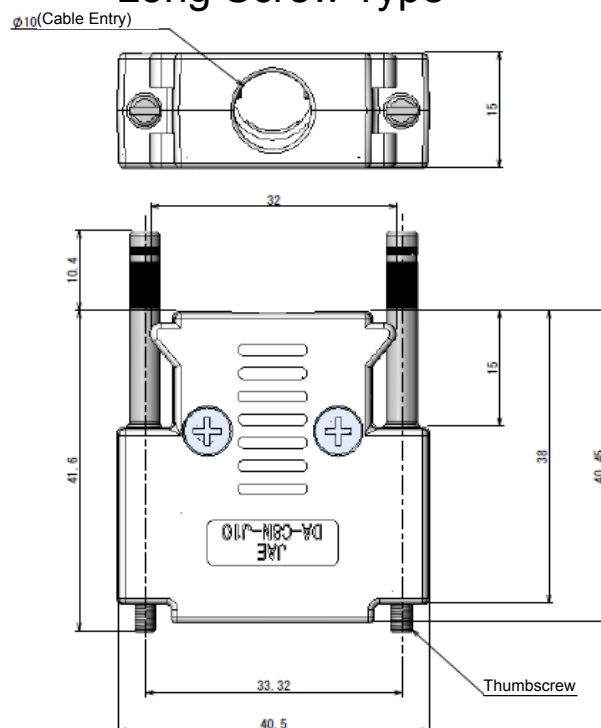
2. DA Size

Short Screw Type



Part Number	Screw Specification	Cable Requirement	
		φmin.	φmax.
DA-C8N-J10-F1-1RN	M2.6 Short Type	8	10
DA-C8N-J10-F2-1RN	#4-40 Short Type		
DA-C8N-J10-F3-1RN	M3 Short Type		

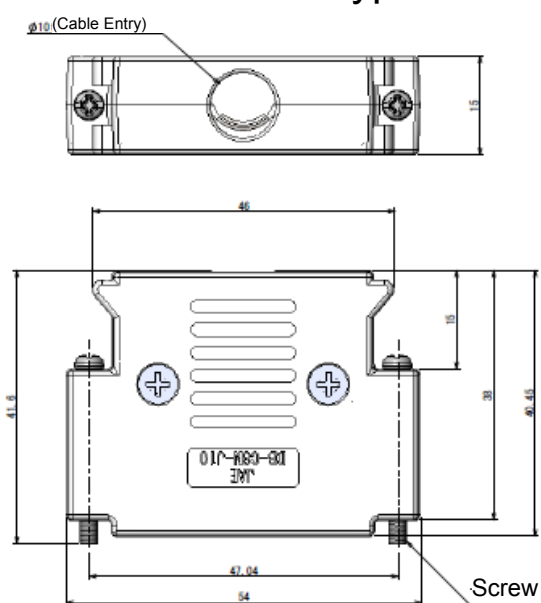
Long Screw Type



Part Number	Thumbscrew Specification	Cable Requirement	
		φmin.	φmax.
DA-C8N-J10-F4-1RN	M2.6 Long Type	8	10
DA-C8N-J10-F5-1RN	#4-40 Long Type		
DA-C8N-J10-F6-1RN	M3 Long Type		

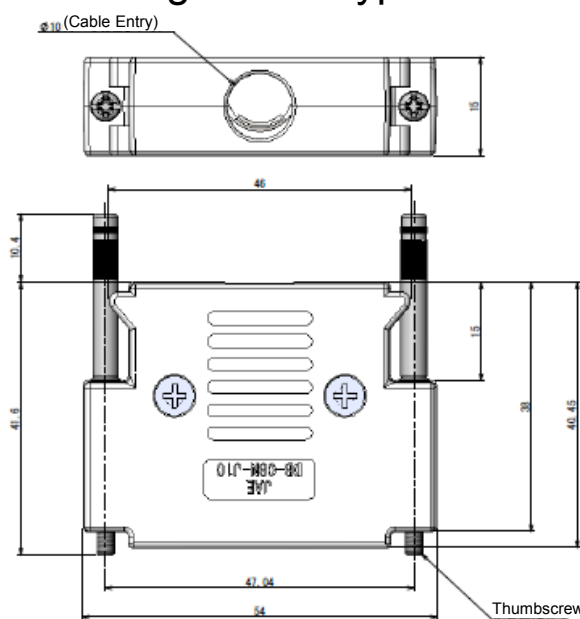
3. DB Size

Short Screw Type



Part Number	Screw Specification	Cable Requirement	
		φmin.	φmax.
DB-C8N-J10-F1-1RN	M2.6 Short Type	8	10
DB-C8N-J10-F2-1RN	#4-40 Short Type		
DB-C8N-J10-F3-1RN	M3 Short Type		

Long Screw Type

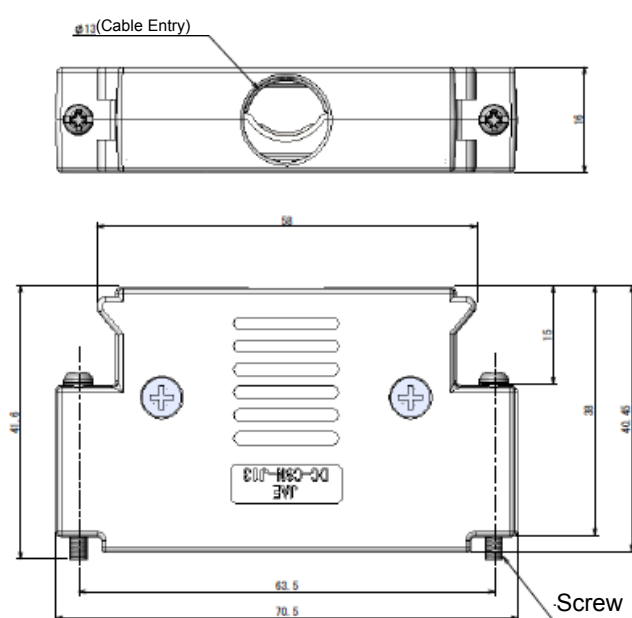


Part Number	Thumbscrew Specification	Cable Requirement	
		φmin.	φmax.
DB-C8N-J10-F4-1RN	M2.6 Long Type	8	10
DB-C8N-J10-F5-1RN	#4-40 Long Type		
DB-C8N-J10-F6-1RN	M3 Long Type		

Dimensions

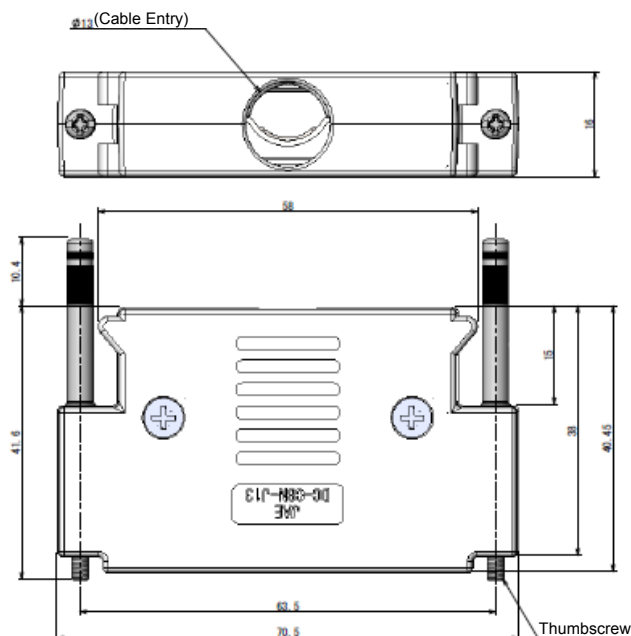
4. DC Size

[Short Screw Type]



Part Number	Screw Specification	Cable Requirement	
		φmin.	φmax.
DC-C8N-J13-F1-1RN	M2.6 Short Type	11	13
DC-C8N-J13-F2-1RN	#4-40 Short Type		
DC-C8N-J13-F3-1RN	M3 Short Type		

[Long Screw Type]



Part Number	Thumbscrew Specification	Cable Requirement	
		φmin.	φmax.
DC-C8N-J13-F4-1RN	M2.6 Long Type	11	13
DC-C8N-J13-F5-1RN	#4-40 Long Type		
DC-C8N-J13-F6-1RN	M3 Long Type		

Note: For applicable outer cable diameter (processed outer diameter), please refer to Handling Instructions JAHL-30347.

Ordering Information

■ Bulk Product

D* - C8N - J* - F* - 1RN

Applicable Shell Size:
DE, DA, DB, DC

Series

Thumbscrew (Long)/ Screw (Short) Code
(Please refer to next page)

Cable Entry Diameter φ(mm)

■ Tray Packaged Product (Supplied in a packaged unit)

D* - C8N - J* - F* - 1RN - Z***

Packaged Product Code
(figures are the number of the pieces contained per carton)
(Please refer to next page)

Code Number for Screw/Thumbscrew

Screw Type	Screw (Short)			Thumbscrew (Long)		
Code Number	1	2	3	4	5	6
Screw/Thumbscrew	M2.6	#4-40	M3	M2.6	#4-40	M3

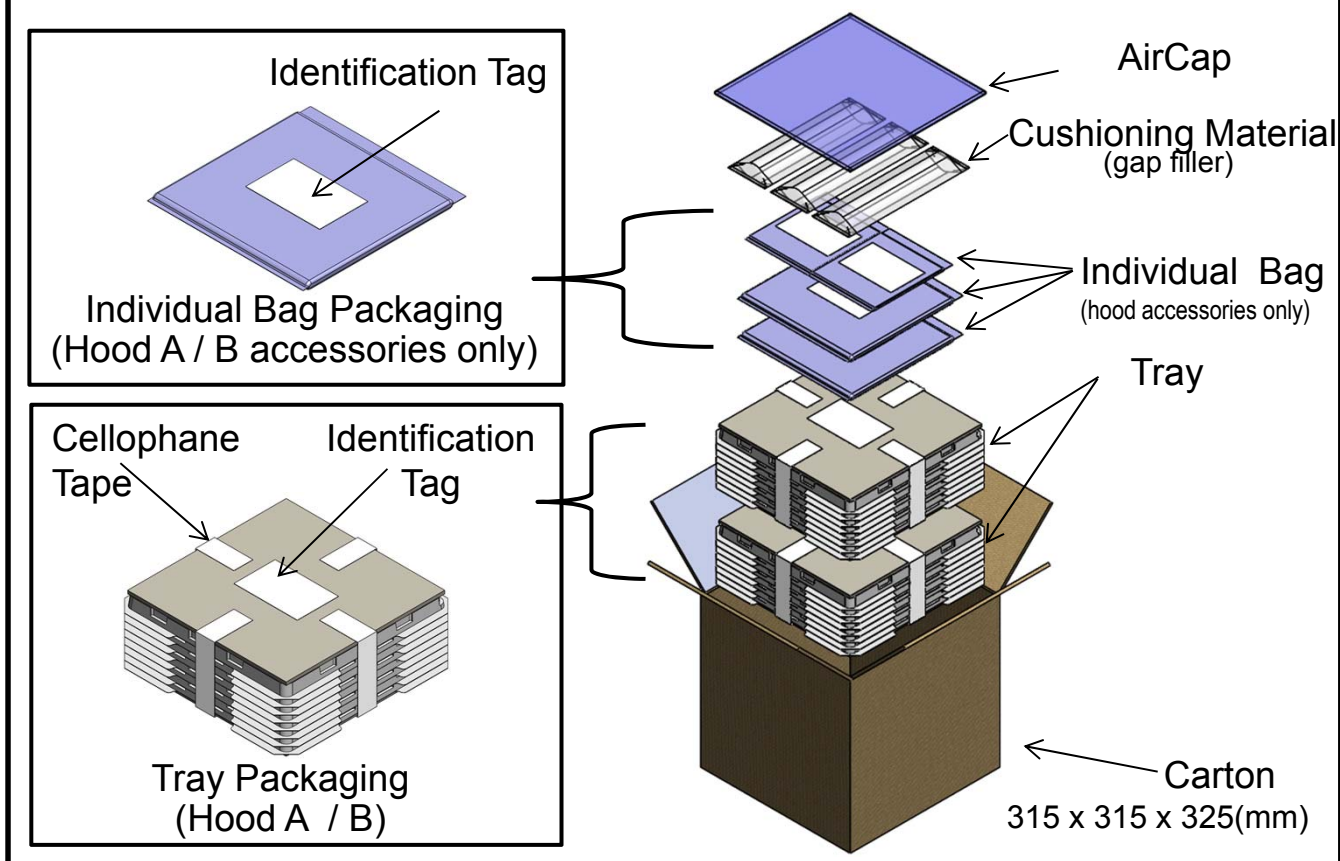
Packaged Units

Shell size	Z***
DE	200
DA	175
DB	140
DC	105

Materials and Finishes

- Hood main unit: ABS resin
- Nut (embedded): Steel / Nickel Plating
- Clamp Saddle: Steel / Nickel Plating
- Screw/Thumbscrew: Steel / Nickel Plating
- Locking Screw: Steel / Nickel Plating
- Hood Assembly Screw: Steel / Nickel Plating

Packaging Specifications of Packaged Product (In the case of DE size)



Technical Documents

Part Number	SJ Drawing	Specifications	Handling Instructions
DE-C8N-J9-F1-1RN	SJ117628	JACS-1045-84	JAHL-30347
DE-C8N-J9-F2-1RN	SJ117629		
DE-C8N-J9-F3-1RN	SJ117630		
DE-C8N-J9-F4-1RN	SJ117631		
DE-C8N-J9-F5-1RN	SJ117632		
DE-C8N-J9-F6-1RN	SJ117633		
DE-C8N-J9-F1-1RN-Z200	SJ117634		
DE-C8N-J9-F2-1RN-Z200	SJ117635		
DE-C8N-J9-F3-1RN-Z200	SJ117636		
DE-C8N-J9-F4-1RN-Z200	SJ117637		
DE-C8N-J9-F5-1RN-Z200	SJ117638		
DE-C8N-J9-F6-1RN-Z200	SJ117639		
DA-C8N-J10-F1-1RN	SJ117640		
DA-C8N-J10-F2-1RN	SJ116900		
DA-C8N-J10-F3-1RN	SJ116901		
DA-C8N-J10-F4-1RN	SJ116902		
DA-C8N-J10-F5-1RN	SJ116903		
DA-C8N-J10-F6-1RN	SJ117587		
DA-C8N-J10-F1-1RN-Z175	SJ117408		
DA-C8N-J10-F2-1RN-Z175	SJ117409		
DA-C8N-J10-F3-1RN-Z175	SJ117410		
DA-C8N-J10-F4-1RN-Z175	SJ117411		
DA-C8N-J10-F5-1RN-Z175	SJ117412		
DA-C8N-J10-F6-1RN-Z175	SJ117590		
DB-C8N-J10-F1-1RN	SJ117641		
DB-C8N-J10-F2-1RN	SJ116904		
DB-C8N-J10-F3-1RN	SJ116905		
DB-C8N-J10-F4-1RN	SJ116906		
DB-C8N-J10-F5-1RN	SJ116907		
DB-C8N-J10-F6-1RN	SJ117588		

Technical Documents

Part Number	SJ Drawing	Specifications	Handling Instructions
DB-C8N-J10-F1-1RN-Z140	SJ117413	JACS-1045-84	JAHL-30347
DB-C8N-J10-F2-1RN-Z140	SJ117414		
DB-C8N-J10-F3-1RN-Z140	SJ117415		
DB-C8N-J10-F4-1RN-Z140	SJ117416		
DB-C8N-J10-F5-1RN-Z140	SJ117417		
DB-C8N-J10-F6-1RN-Z140	SJ117591		
DC-C8N-J13-F1-1RN	SJ117642		
DC-C8N-J13-F2-1RN	SJ116908		
DC-C8N-J13-F3-1RN	SJ116909		
DC-C8N-J13-F4-1RN	SJ116910		
DC-C8N-J13-F5-1RN	SJ116911		
DC-C8N-J13-F6-1RN	SJ117589		
DC-C8N-J13-F1-1RN-Z105	SJ117418		
DC-C8N-J13-F2-1RN-Z105	SJ117419		
DC-C8N-J13-F3-1RN-Z105	SJ117420		
DC-C8N-J13-F4-1RN-Z105	SJ117421		
DC-C8N-J13-F5-1RN-Z105	SJ117422		
DC-C8N-J13-F6-1RN-Z105	SJ117592		

Notice:

1. The values specified in this brochure are only for reference. The products and their specifications are subject to change without notice. Contact our sales staff for further information before considering or ordering any of our products.
For purchase, a product specification must be agreed upon.

2. Users are requested to provide protection circuits and redundancy circuits to ensure safety of the equipment, and sufficiently review the suitability of JAE's products to the equipment.

3. The products presented in this brochure are designed for the uses recommended below.
We strongly suggest you contact our sales staff when considering use of any of the products in any other way than the recommended applications or for a specific use that requires an extremely high reliability.

(1) Applications that require consultation:

(i) Please contact us if you are considering use involving a quality assurance program that you specify or that is peculiar to the industry, such as:

Automotive electrical components, train control, telecommunications devices (mainline), traffic light control, electric power, combustion control, fire prevention or security systems, disaster prevention equipment, etc.

(ii) We may separately give you our support with a quality assurance program that you specify, when you think of a use such as :

Aviation or space equipment, submarine repeaters, nuclear power control systems, medical equipment for life support, etc.

(2) Recommended applications include:

Computers, office appliances, telecommunications devices (terminals, mobile units), measuring equipment, audiovisual equipment, home electric appliances, factory automation equipment, etc.

Japan Aviation Electronics Industry, Limited

Product Marketing Division

Aobadai Building, 3-1-19, Aobadai, Meguro-ku, Tokyo 153-8539

Phone: +81-3-3780-2882 FAX: +81-3-3780-2946

* The specifications in this brochure are subject to change without notice. Please contact JAE for information.