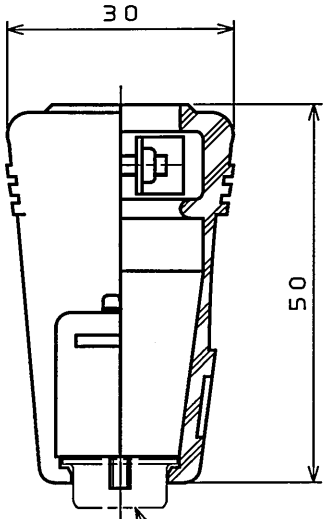
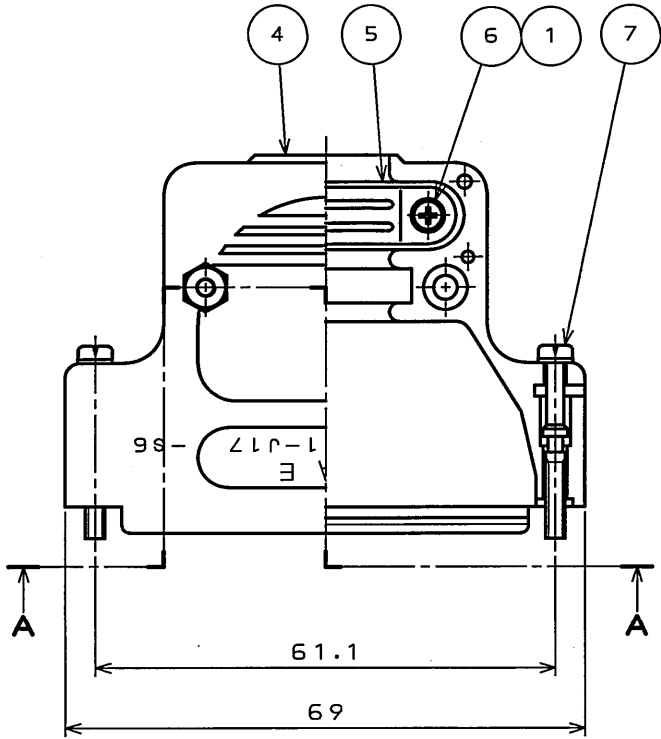


LS6101PS
(ON 0NIMVHD)台基図

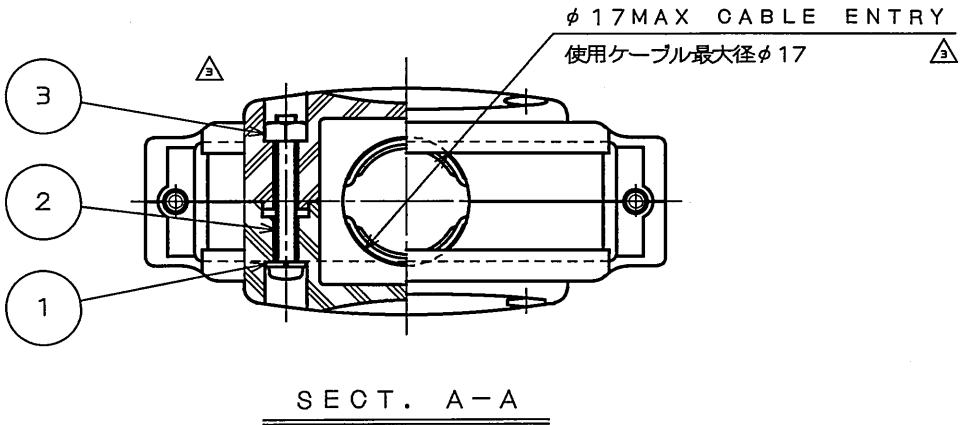
版数 REV.	年月日 DATE	DCN NO.	変更内容 DESCRIPTION	製図 DR.	担当 CHK.	査閲 APPD.	承認 APPD.
2	10.Nov.2005	058570	CHANGE TO BILINGUAL		Y.TAKA01	A.TA00	Y.KUBOTA
3	10.Apr.2006	059841	CORRECT AN ERROR,OTHER		Y.TAKA01	A. Sago	Y.Kubota



DD*-50-*
FIXED CONNECTOR(REF.)
コネクタ適用例(参考)


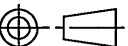


SCREW LOCKS EXTRA FORM
嵌合固定ねじ別途形状



SECT. A-A

7	SCREW LOCK ASSEMBLY	MAIN SCREW	2	STEEL	HEXAVALENT CHROMIUM FREE CHROMATE (TRIVALENT CHROMATE TREATMENT) ON ELECTROPLATED ZINC	# 4-40
		SPRING WASHER	2	STEEL	HEXAVALENT CHROMIUM FREE CHROMATE (TRIVALENT CHROMATE TREATMENT) ON ELECTROPLATED ZINC	_____
6	CROSS PAN HEAD SCREW	2	STEEL	HEXAVALENT CHROMIUM FREE CHROMATE (TRIVALENT CHROMATE TREATMENT) ON ELECTROPLATED ZINC	M2.6×12	
5		CLAMP SADDLE	2	STEEL or COPPER ALLOY	HEXAVALENT CHROMIUM FREE CHROMATE (TRIVALENT CHROMATE TREATMENT) ON ELECTROPLATED ZINC	_____
4	MAIN HOOD	2	ABS RESIN	(COLOR: LIGHT GREY) △	_____	
3	HEXAGON NUT	2	COPPER ALLOY △	HEXAVALENT CHROMIUM FREE CHROMATE (TRIVALENT CHROMATE TREATMENT) ON ELECTROPLATED ZINC	M2.6	
2	CROSS PAN HEAD SCREW	2	STEEL	HEXAVALENT CHROMIUM FREE CHROMATE (TRIVALENT CHROMATE TREATMENT) ON ELECTROPLATED ZINC	M2.6×20	
1	SPRING WASHER	4	STEEL	HEXAVALENT CHROMIUM FREE CHROMATE (TRIVALENT CHROMATE TREATMENT) ON ELECTROPLATED ZINC	M2.6	
符 号 NO.	名 称 DESCRIPTION	個 数 QTY.	材 料 MATERIAL	仕 上 FINISH	備 考 REMARKS	

仕様書 (SPECIFICATION)		第1版 (ORIGINAL DATE) 15.Sep.2005		尺度 (SCALE) 2: 1		シリーズ (SERIES) D-sub		日本航空電子工業株式会社 JAPAN AVIATION ELECTRONICS INDUSTRY, LTD.  図面番号 (DRAWING NO.) SJ101957
一般公差 (GENERAL TOLERANCE)		製図 DR.		名称 (TITLE) DD-C1-J17-S6R				
寸法 (DIMENSION)	角度 (ANGLES)	担当 CHK.	Y.TAKA01					
		査閲 APPD.						
		承認 APPD.	Y.KUBOTA	質量 (MASS) _____				

NOTE1. PART NUMBER & COMPANY LOGO "JAE" AS INDICATED.
注1. 図示の位置に社名及び品名略称を表示する。