

NOTE 1. COPLANARITY OF SMT TERMINAL IS 0.1 MAX
NOTE 2. RECOMMENDED METAL MASK THICKNESS:120 um
NOTE 3. THE SHELL LENGTH IS LESS THAN THE MINIMUM SPECIFIED BY THE USB STANDARD.
AS SUCH IT CANNOT INDEPENDENTLY BE GUARANTEED TO MEET ALL TYPE C MECHANICAL REQUIREMENTS.
THE SYSTEM IMPLEMENTER IS RESPONSIBLE FOR ACHIEVING PRODUCT RELIABILITY AND PASSING USB COMPLIANCE TESTING.
REFERENCE THE USB TYPE C SPECIFICATION RELEASE 1.1, SECTION 3.2.1, NOTE7.
NOTE 4. LOT NUMBER IS MARKED AS INDICATED.

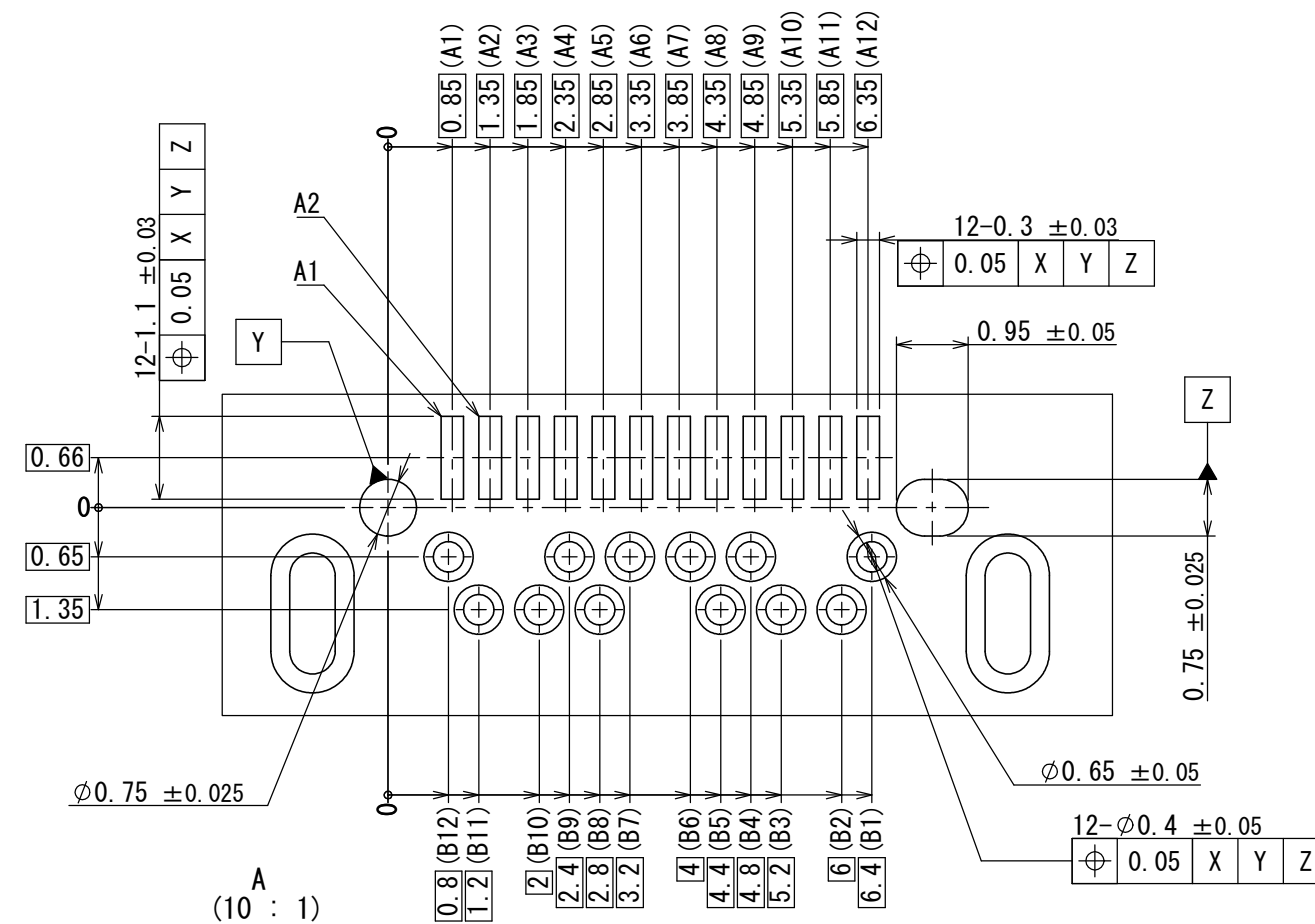
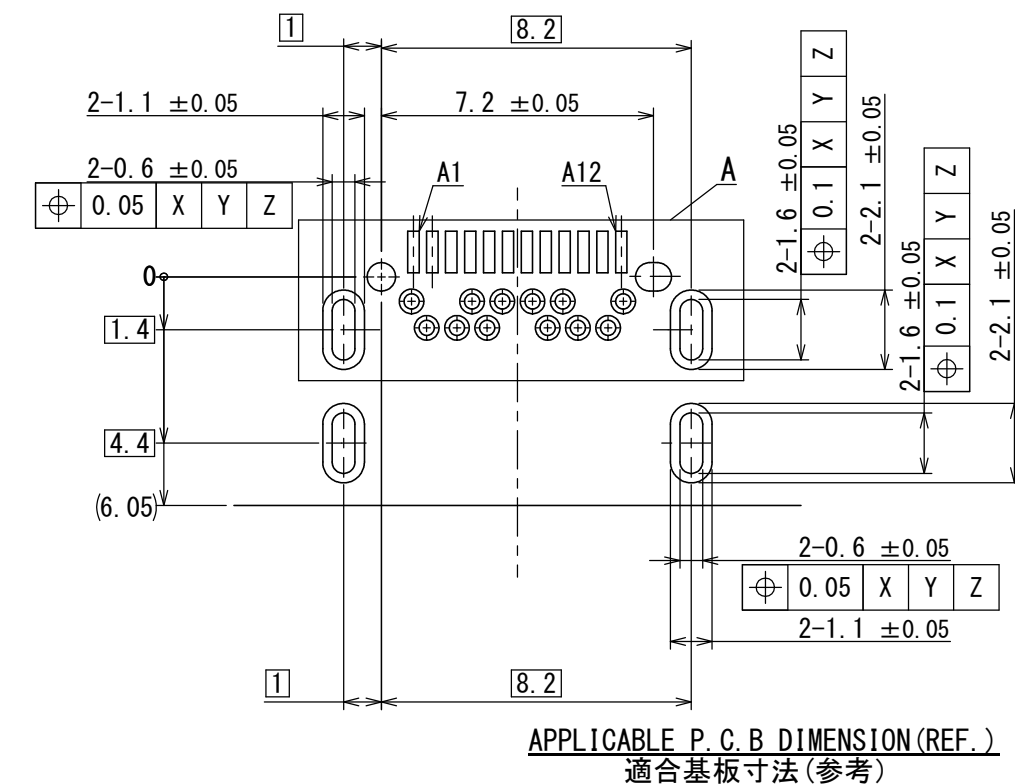
(EX) 5 6 15 1
 EQUIPMENT No. (NUMBER OR ALPHABET)
 DAY (TWO-DIGITS NUMBER)
 MONTH (NUM. TO SEP. :1 TO 9, OCT. :0, NOV. :X, DEC. :Y)
 YEAR (END OF DIGIT AT CHRISTIAN ERA)

A12	GND	B1	GND
A11	SSRxp2	B2	SSTxp2
A10	SSRXn2	B3	SSTXn2
A9	VBUS	B4	VBUS
A8	SUB1	B5	CC2
A7	Dn1	B6	Dp2
A6	Dp1	B7	Dn2
A5	CC1	B8	SUB2
A4	VBUS	B9	VBUS
A3	SSTXn1	B10	SSRXn1
A2	SSTxp1	B11	SSRXp1
A1	GND	B12	GND
PIN	SIGNAL NAME	PIN	SIGNAL NAME




TABLE 1

	FINISH	PLATING THICKNESS
CONTACT AREA	GOLD FLASH OVER PALLADIUM-NICKEL OVER NICKEL	NICKEL: 2 μ m MIN. PALLADIUM-NICKEL: 0.75 μ m MIN. GOLD FLASH: 0.05 μ m MIN.
SOLDER TAILS	GOLD FLASH OVER NICKEL	NICKEL: 2 μ m MIN. GOLD FLASH: 0.03 μ m MIN.

版数 VER.	年月日 DATE	図 CN NO.	変更内容 DESCRIPTION	製 DR.	担 当 CHK.	査 閲 APPD.	承 認 APPD.
------------	-------------	-------------	---------------------	----------	-------------	--------------	--------------

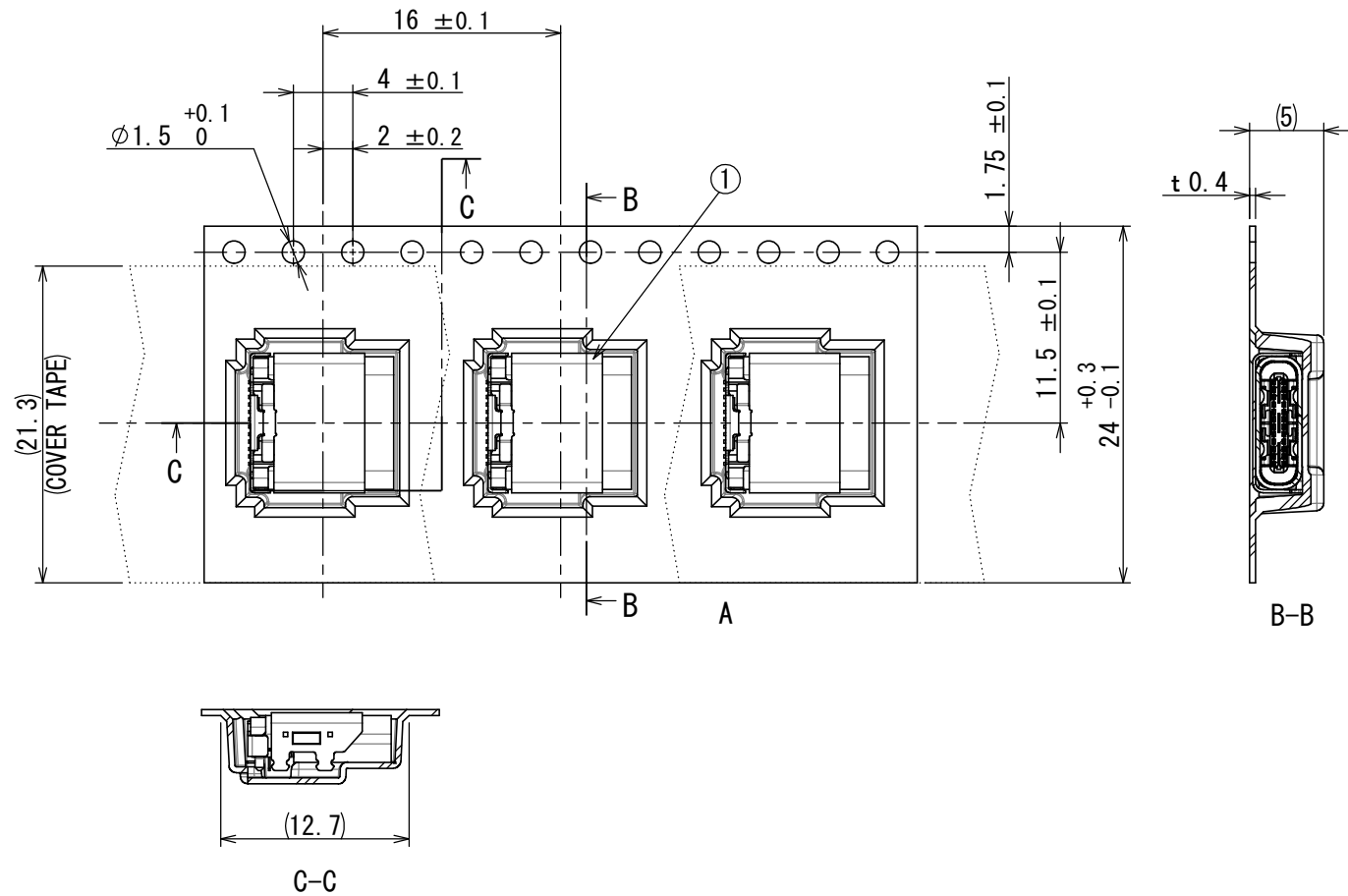
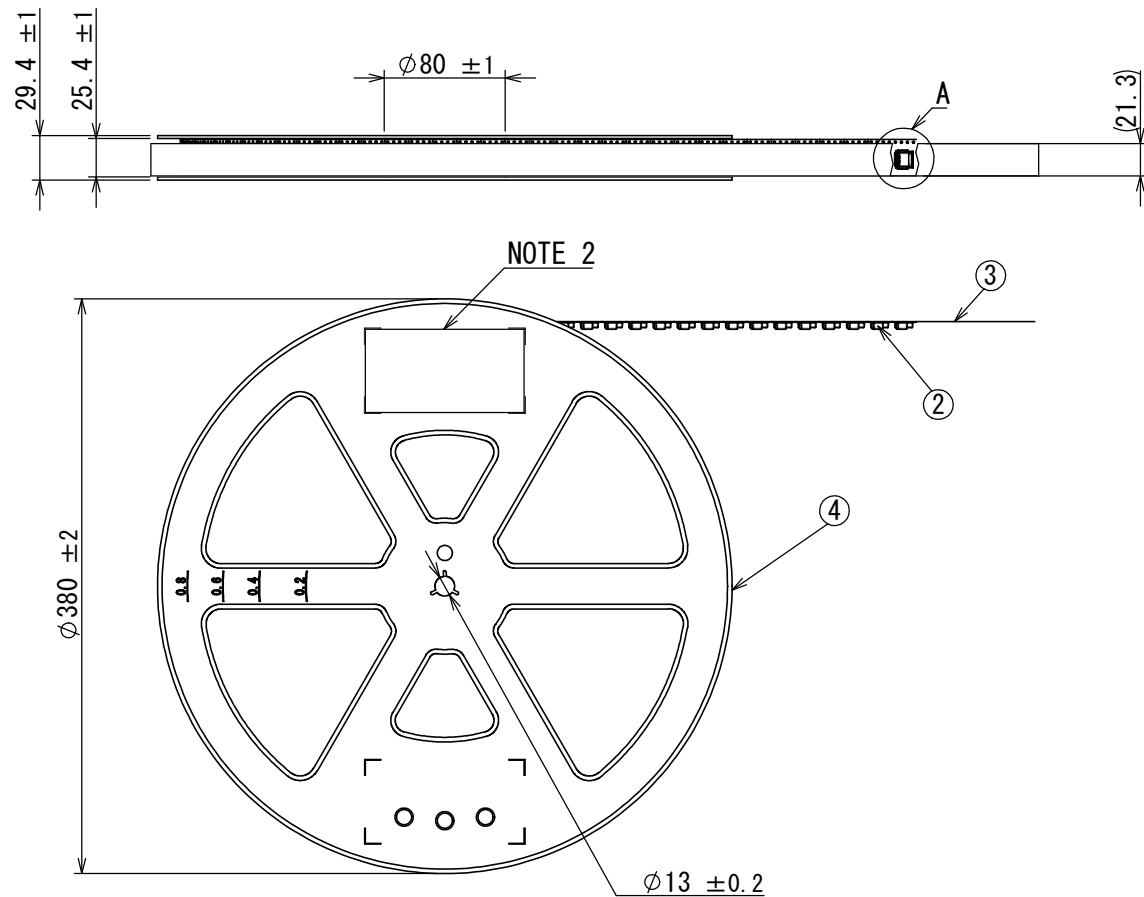


10	REAR SHIELD	1	STAINLESS STEEL	NICKEL PLATING	PLATING THICKNESS:1 μ m Min.
9	LOCATOR	1	THERMOPLASTIC RESIN	COLOR:BLACK	HALOGEN-FREE
8	BRACKET	1	STAINLESS STEEL	NICKEL PLATING	PLATING THICKNESS:1 μ m Min.
7	SHELL	1	STAINLESS STEEL	BLACK NICKEL PLATING	PLATING THICKNESS:1 μ m Min.
6	GND PLATE	2	STAINLESS STEEL	NICKEL PLATING	PLATING THICKNESS:0.8 μ m Min.
5	GND MID PLATE	1	STAINLESS STEEL	NICKEL PLATING	PLATING THICKNESS:1 μ m Min.
4	INSULATOR	1	THERMOPLASTIC RESIN	COLOR:BLACK	HALOGEN-FREE
3	CONTACT C	6	COPPER ALLOY	TABLE 1	
2	CONTACT B	6	COPPER ALLOY	TABLE 1	
1	CONTACT A	12	COPPER ALLOY	TABLE 1	

符号 NO.	名称 DESCRIPTION	個 QTY.	材 料 MATERIAL	仕 上 FINISH	備 考 REMARKS	版 数 (VER.)
仕様書 (SPECIFICATION)		第1版 (ORIGINAL DATE) 16/JUN/2015		尺度 (SCALE) 5:1	シリーズ (SERIES) DX07	日本航空電子工業株式会社
一般公差 (GENERAL TOLERANCE)		製図 DR.	名称 (TITLE) DX07S024XJ1	 JAPAN AVIATION ELECTRONICS INDUSTRY, LTD.		 図面番号 (DRAWING NO.) SJ116123
寸法 (DIMENSION)		担当 CHK.	M. SASAKI			
角度 (ANGLES)		査閲 APPD.	—			
単位 (UNIT) : mm		承認 APPD.	T. MASUMOTO			
. ± 0.8 . × ± 0.4 . × × ± 0.1 . × × × ±		質量 (MASS)				1

SJ116124
(DRAWING NO.)

版数 VER.	年月日 DATE	CN NO.	変更内容 DESCRIPTION	製図 DR.	担当 CHK.	査閲 APPD.	承認 APPD.
------------	-------------	--------	---------------------	-----------	------------	-------------	-------------



現品ラベル/ARTICLE LABEL

品名 (DESCRIPTION) DX07S024XJ1R1100

図番 (PART No.) SJ116124

数量 (Q'ty) 1,100

ITEM NO

Lot No.

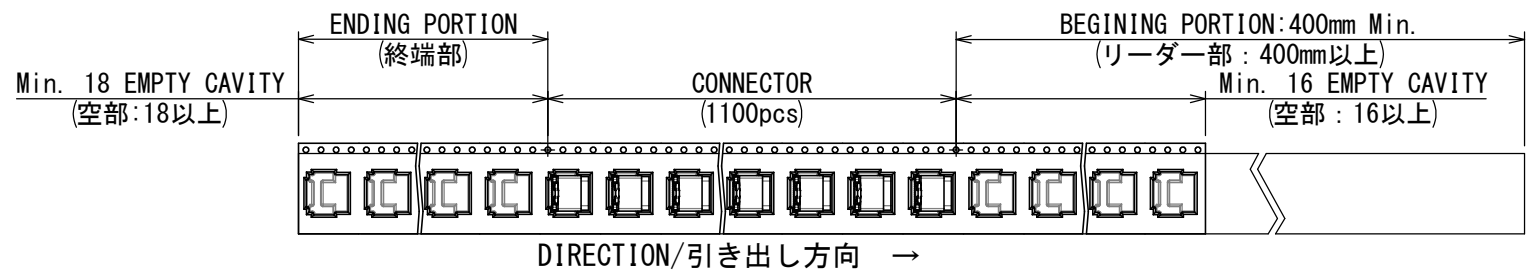
E. Code. TB2416

2013/10/27

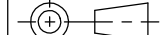
MADE IN JAPAN

QCF-C-0678(12.01)/JAPS-0006-2

LABEL (NOTE 2)



4	REEL	1	PS	—	—
3	COVER TAPE	1	PET	—	—
2	CARRIER TAPE	1	PS	—	—
1	CONNECTOR	1100	—	—	DX07S024XJ1 (SJ116123)
符号 NO.	名 称 DESCRIPTION	個 数 QTY.	材 料 MATERIAL	仕 上 FINISH	備 考 REMARKS

仕様書 (SPECIFICATION)		第1版 (ORIGINAL DATE) 16/JUN/2015		尺度 (SCALE) 1:5	シリーズ (SERIES) DX07	日本航空電子工業株式会社 JAE JAPAN AVIATION ELECTRONICS INDUSTRY, LTD.	図面番号 (DRAWING NO.) SJ116124	版数 (VER.) 1
		製図 DR.		名称 (TITLE) DX07S024XJ1R1100				
一般公差 (GENERAL TOLERANCE)		担当 CHK.	M. SASAKI	質量 (MASS)				
寸法 (DIMENSION)		査閲 APPD.	—					
角度 (ANGLES)		承認 APPD.	T. MASUMOTO					
単位 (UNIT) : mm								
. ± 0.8		×° ±						
. × ± 0.4		×°×' ±						
. ×× ± 0.1								
. ××× ±								

NOTE 1. SUFFIX "DX07S024XJ1R1100" OF THE PART NUMBER INDICATES THAT 1100 PCS. OF DX07S024XJ1 CONNECTORS ARE ACCOMODATED IN ONE REEL.

NOTE 2. THE LABEL IS TO BE ATTACHED ON THE REEL AS SHOWN.

NOTE 3. REFFER TO THE DRAWING. SJ116123 (DX07S024XJ1) FOR THE DIMENSION OF THE CONNECTOR.

NOTE 4. REEL FORM MAY DIRRER FROM THE DRAWING.

注1. "DX07S024XJ1R1100"は、収納数1100個入りのリールに収納された品名を表す。

注2. 図示の位置に、下記の表示を行い、品名、収納数、ロットNo. 及びテープ幅と送りピッチを記入すること。

注3. コネクタ寸法は、SJ116123を参照。

注4. 記載図とリール意匠の詳細が異なる場合がある。