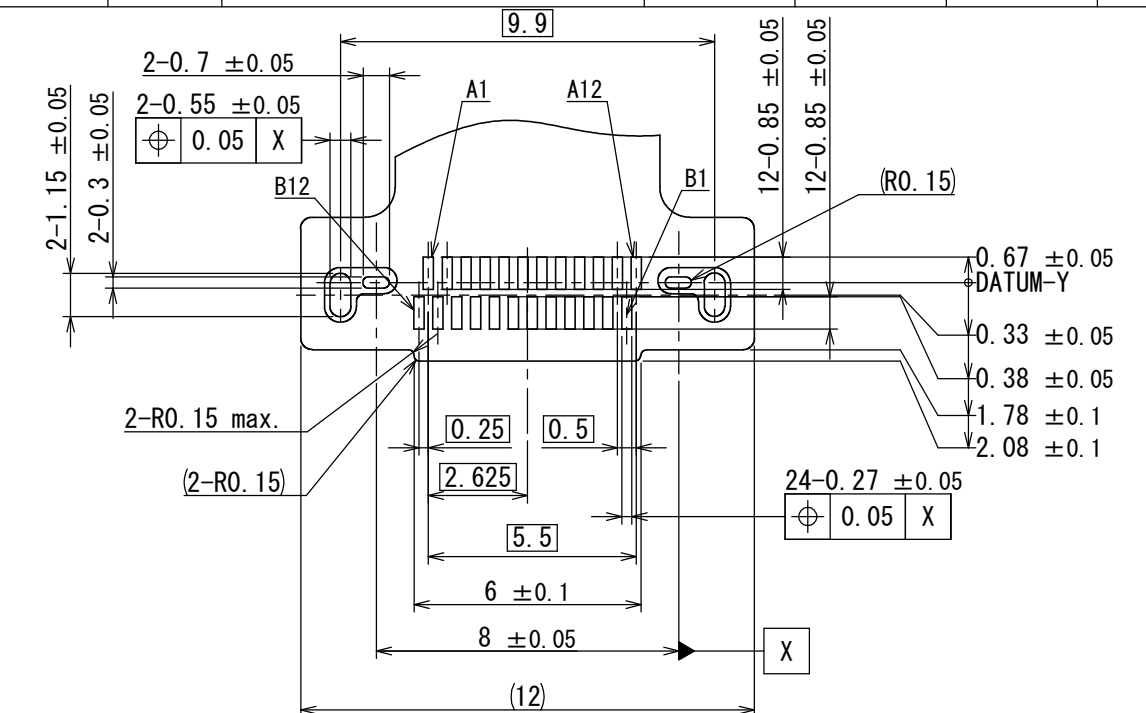
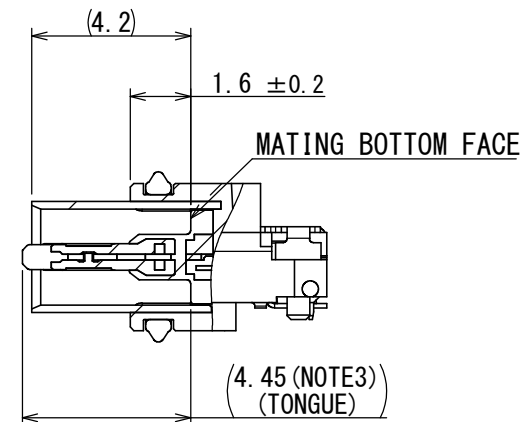
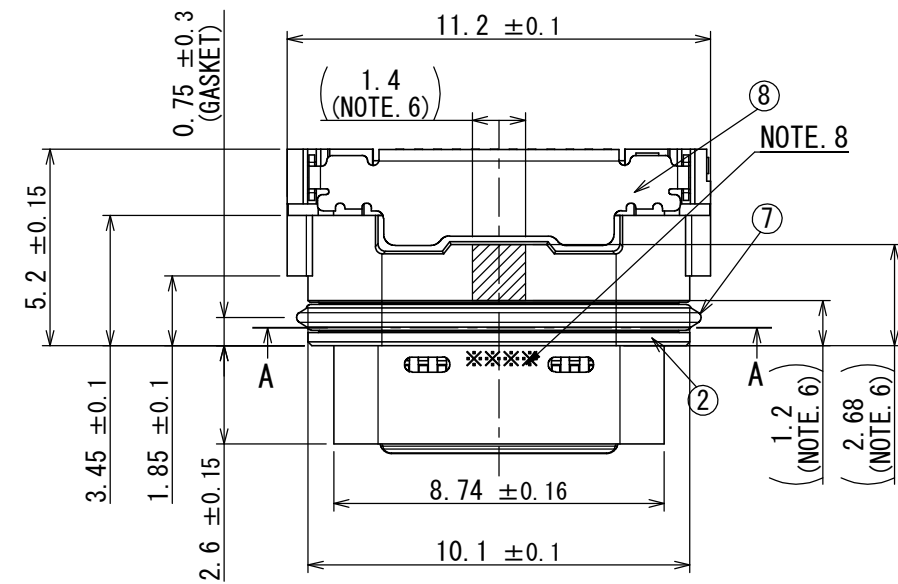
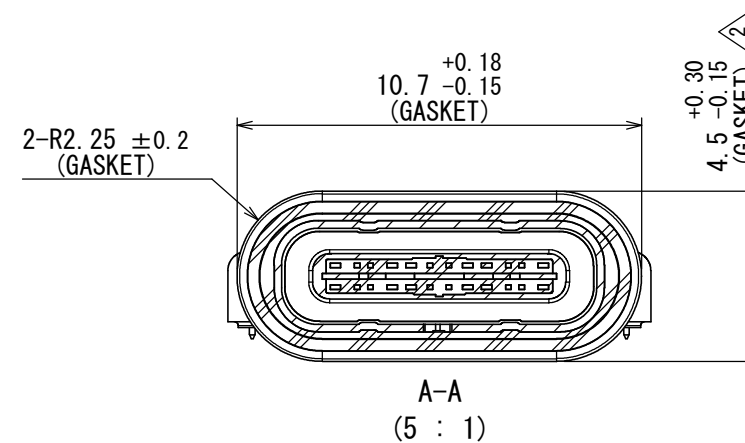
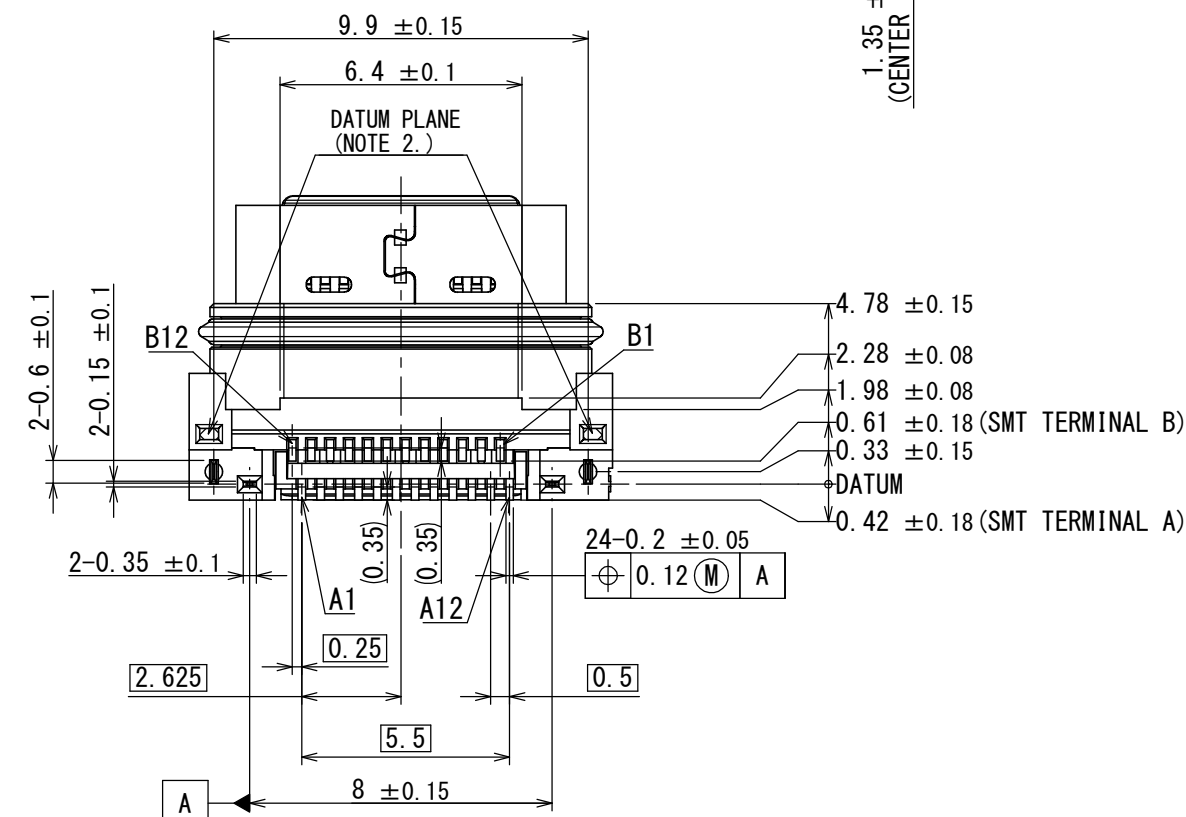
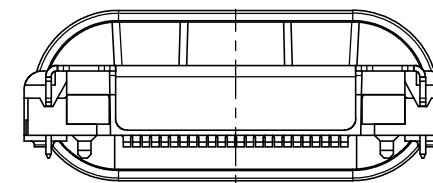
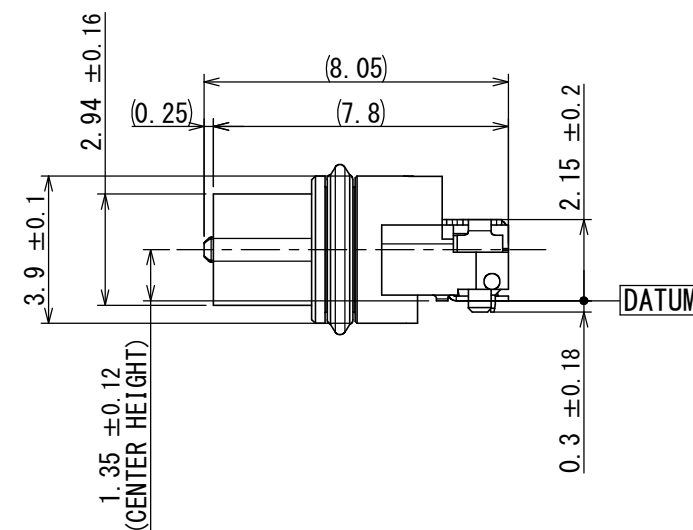
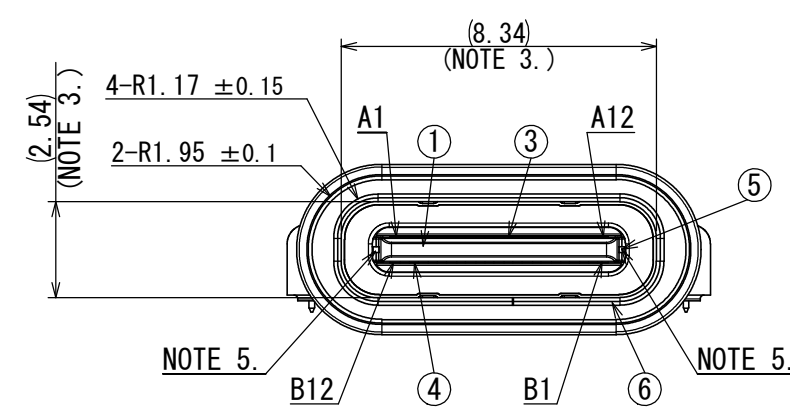


版数 VER.	年月日 D A T E	CN NO.	変更内容 DESCRIPTION	製 DR.	担当 CHK.	査 問 APPD.	承認 APPD.
2	30/JUL/2019	028996	PRESCRIPTIVE RECONSIDERATION		H. OOTANI	—	I. IGARASHI



APPLICABLE P. C. B. DIMENSION (REF.)  
SURFACE VIEW FROM CONNECTOR MOUNTING SIDE.

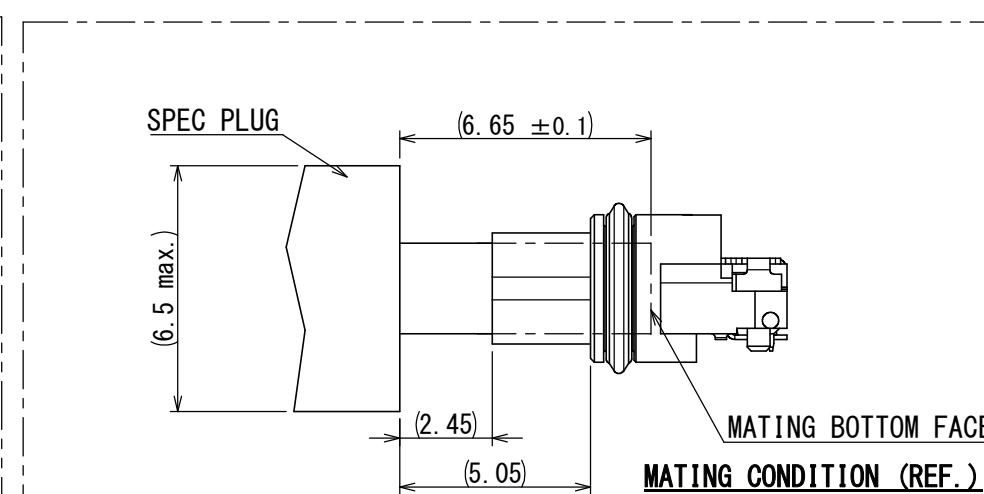
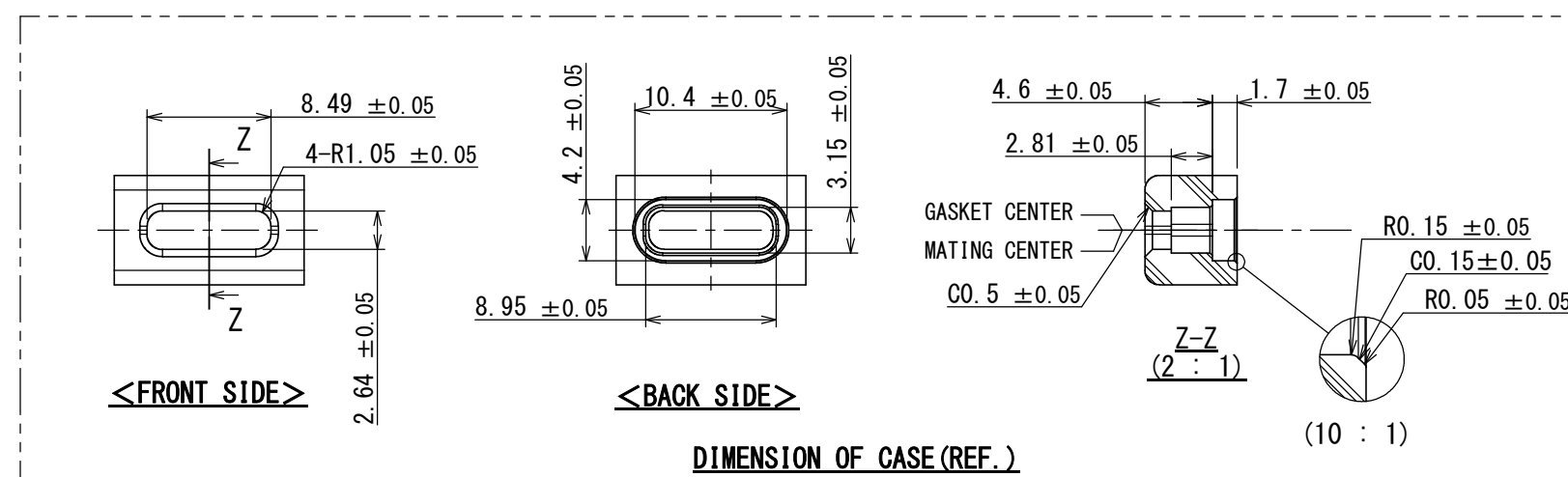
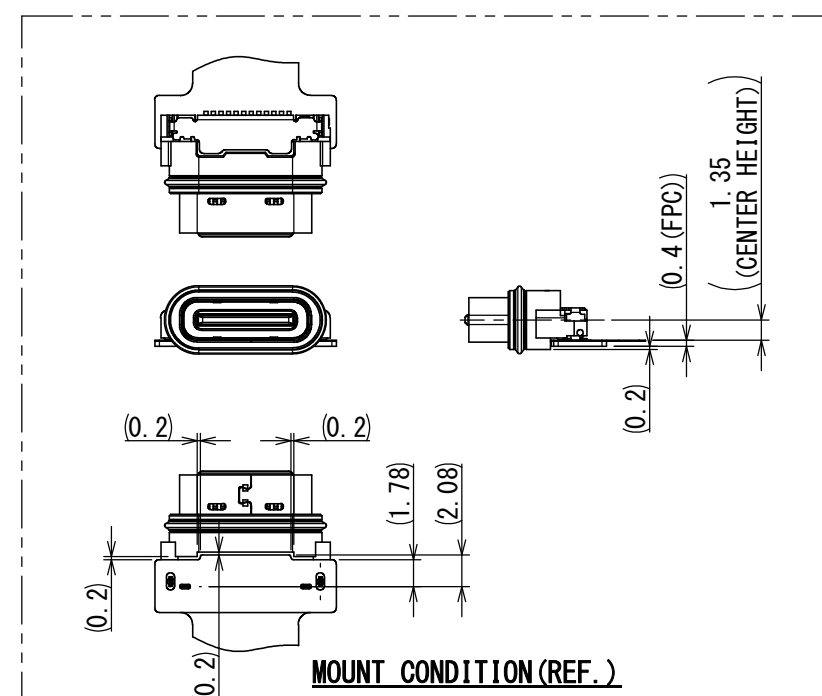
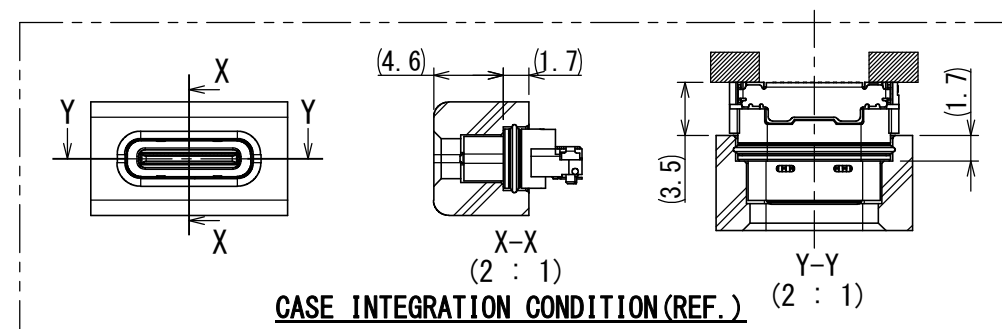


Pin No.	A1	A2	A3	A4	A5	A6	A7	A8	A9	A10	A11	A12
	GND	TX1+	TX1-	V <sub>BUS</sub>	CC1	D+	D-	SBU1	V <sub>BUS</sub>	RX2-	RX2+	GND
	GND	RX1+	RX1-	V <sub>BUS</sub>	SBU2	D-	D+	CC2	V <sub>BUS</sub>	TX2-	TX2+	GND

NOTE 8. LOT NO. IS MARKED AS SHOWN IN BELOW TABLE.

YEAR(1 DIGIT)		MONTH(1 DIGIT)		DAY(1 DIGIT)								LINE(1 DIGIT)	
YEAR	MARKING	MONTH	MARKING	DAY	MARKING	DAY	MARKING	DAY	MARKING	DAY	MARKING	LINE	MARKING
2018	8	1	1	1	1	11	B	21	M	31	Y	Manual	0
2019	9	2	2	2	2	12	C	22	N			1	1
2020	0			3	3	13	D	23	P			2	2
2021	1	*	*	4	4	14	E	24	Q				
2022	2	*	*	5	5	15	F	25	R				
2023	3			6	6	16	G	26	S			*	*
2024	4	9	9	7	7	17	H	27	T			*	*
2025	5	10	A	8	8	18	J	28	U			*	*
2026	6	11	B	9	9	19	K	29	V				
2027	7	12	C	10	A	20	L	30	X				

NOTE 9. THE P.C.B. LAYOUT IS ONLY FOR REFERENCE.  
ACTUAL PCB DESIGN (INCLUDING DIMENSION AND TOLERANCE) IS SUPPOSED TO BE INVESTIGATED BY DEVICE MANUFACTURER.

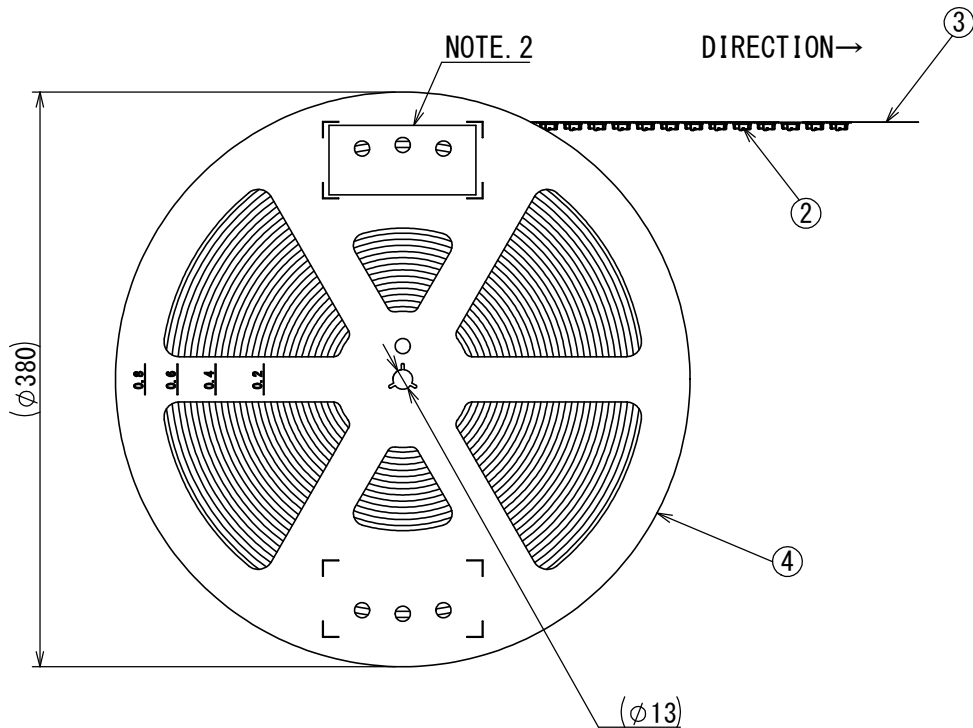
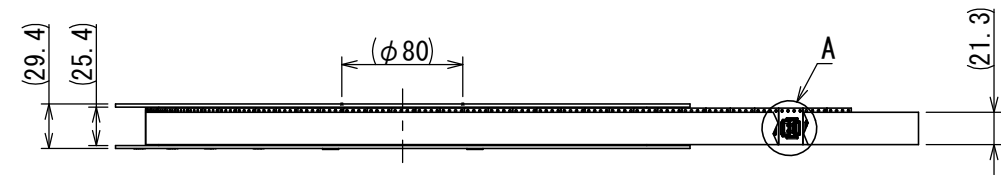


8	REAR SHIELD	1	STAINLESS STEEL	NICKEL PLATING	—
7	GASKET	1	SILICONE RUBBER	—	COLOR: RED
6	SHELL	1	STAINLESS STEEL	—	—
5	MID PLATE	1	STAINLESS STEEL	NICKEL PLATING	—
4	CONTACT B	12	COPPER ALLOY	CONTACT AREA: GOLD OVER NICKEL	CONTACT AREA: NICKEL : 1 $\mu\text{m}$ MIN GOLD : 0.1 $\mu\text{m}$ MIN
3	CONTACT A	12		SOLDER TAILS: GOLD FLASH OVER NICKEL	
2	SUB ASSEMBLY INSERT MOLD	1	HEAT RESISTING PLASTIC	—	COLOR: BLACK
1	MID PLATE INSERT MOLD	1	HEAT RESISTING PLASTIC	—	COLOR: BLACK
符号	名称 Component Name	数量 Quantity	材料 Material	仕上 Finish	備考 Remarks

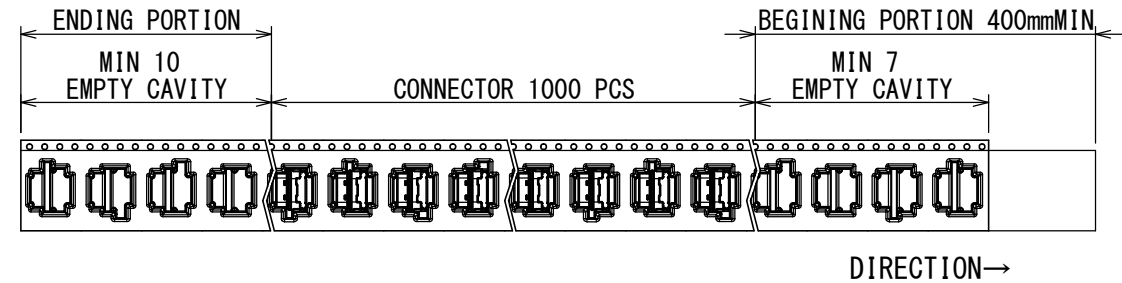
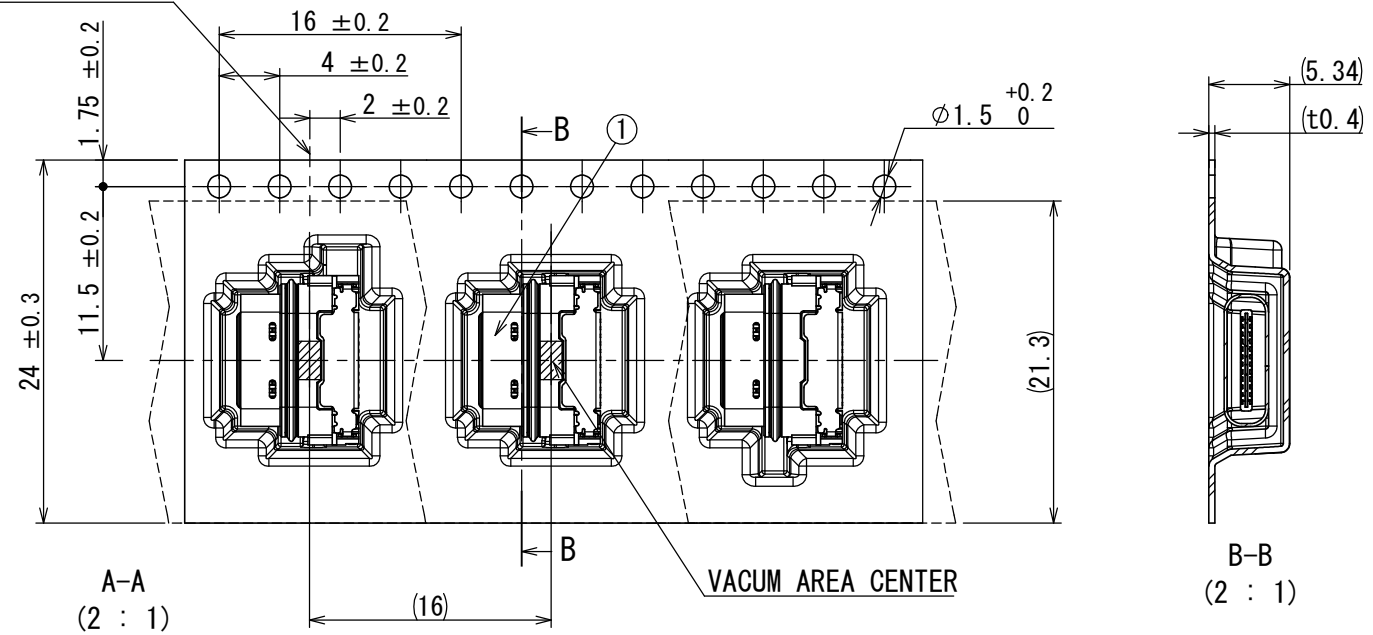
NO.	DESCRIPTION	QTY.	MATERIAL	FINISH	REMARKS		
仕様書 (SPECIFICATION)			第1版 (ORIGINAL DATE) 25/MAY/2018	尺度 (SCALE) 5:1	シリーズ (SERIES) DX07	日本航空電子工業株式会社	
JACS-30398 JAHL-30398			製図 DR.	名称 (TITLE) DX07W024JA1	 JAPAN AVIATION ELECTRONICS INDUSTRY, LTD.		
一般公差 (GENERAL TOLERANCE)		担当 CHK.	T. KUROSAWA			図面番号 (DRAWING NO.)  SJ119582	
寸法 (DIMENSION)		角度 (ANGLES)	套開 APPD.				版数 (VER.)  2
± 0.8		×° ±	承認 APPD.				
× ± 0.4		××° ±	M. KIKUCHI				
×× ± 0.1							
××× ±		単位 (UNIT) : mm		質量 (MASS)			

SJ119583  
(ON DRAWING NO.)

版数 VER.	年月日 DATE	CN NO.	変更内容 DESCRIPTION	製図 DR.	担当 CHK.	査閲 APPD.	承認 APPD.
------------	-------------	--------	---------------------	-----------	------------	-------------	-------------




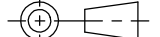
CARRIER HOLE  
CENTER



NOTE1. SUFFIX "R1000" OF PART NUMBER "DX07W024JA1R1000" INDICATES 1000PCS IN REEL.  
NOTE2. THE LABEL IN WHICH PART No., QUANTITY, LOT No., TAPE WIDTH AND FEED PITCH ARE MARKED IS ATTACHED AS SHOWN.  
NOTE3. REFER TO THE DRAWING "SJ119582 (DX07W024JA1)" FOR THE CONNECTOR DIMENSIONS.  
NOTE4. REEL FORM MAY DIFFER FROM THE DRAWING.

現品ラベル/ARTICLE LABEL		XXXXXXXXXX XXXX XXXX XXXX
品名 (DESCRIPTION)	DX07W024JA1R1000	Count: 001 JAE001
図番 (PART No.)	SJ119583	
数量 (Q'ty)	1000	
ITEM NO		
Lot No.		
E. Code	TB2416	
		2018/05/25
MADE IN JAPAN		QCF-G-0628 (07.12)/JAPS-9006-2
Japan Aviation Electronics Industry, Ltd.		

4	REEL	1	PS	—	—
3	COVER TAPE	1	PET	—	—
2	CARRIER TAPE	1	PS	—	—
1	CONNECTOR	1000	—	—	DX07W024JA1 (SJ119582)
符号 No.	名称 DESCRIPTION	個数 QTY.	材料 MATERIAL	仕上 FINISH	図番 DWG. NO.

仕様書 (SPECIFICATION)		第1版 (ORIGINAL DATE)		尺度 (SCALE)	シリーズ (SERIES)	日本航空電子工業株式会社  JAPAN AVIATION ELECTRONICS INDUSTRY, LTD.	図面番号 (DRAWING NO.)	版数 (VER.)
JACS-30398 JABL-30398		25/MAY/2018		1 : 5	DX07			
一般公差 (GENERAL TOLERANCE)		担当 CHK. T. KUROSAWA		名称 (TITLE)				
寸法 (DIMENSION)		査閲 APPD. H. OOTANI		DX07W024JA1 R1000				
±0.8		承認 APPD. M. KIKUCHI		質量 (MASS)			SJ119583	1
× ±		単位 (UNIT) : mm						
×° ±								