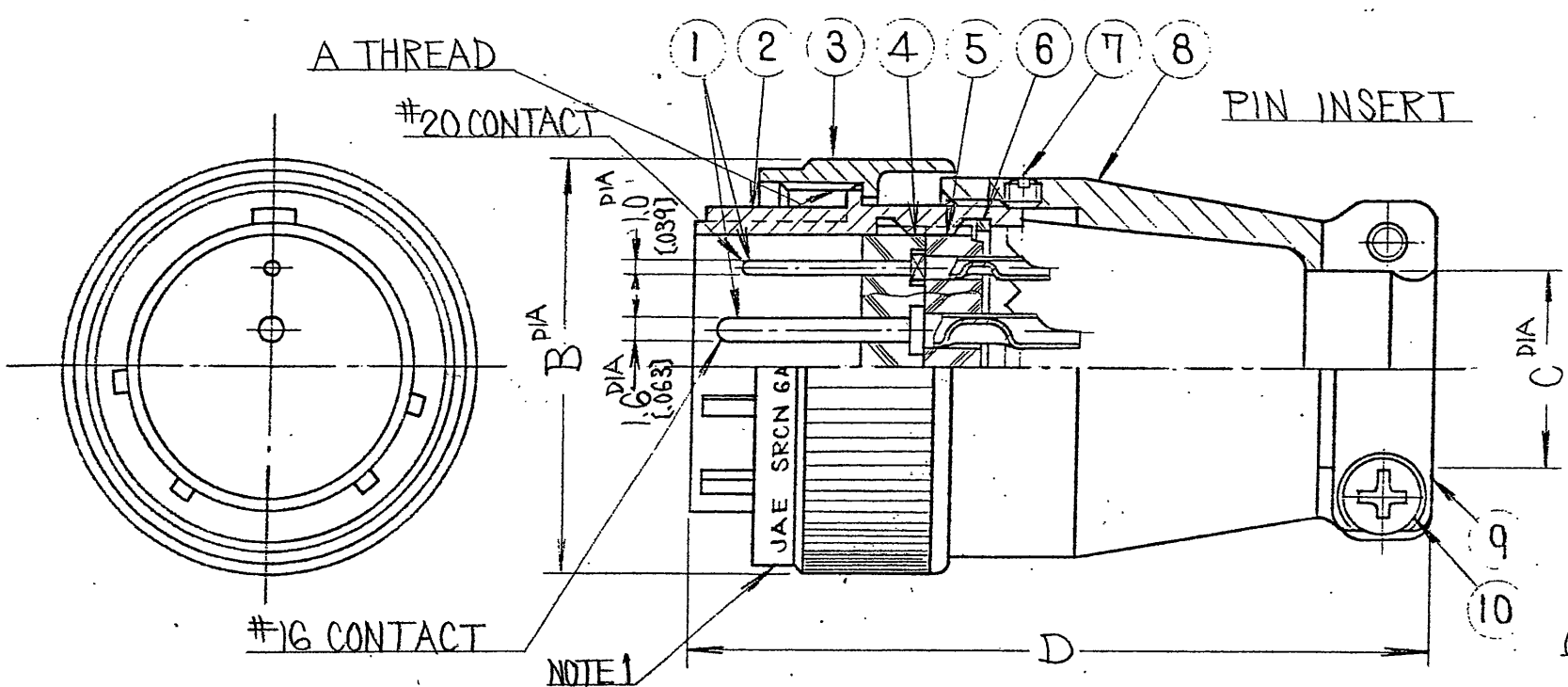


DWG. NO.	SYM.
SJ016062-E	3

SYM.	DCN NO.	DESCRIPTION	DATE	DRAWN	CHECKED	APP'D	APP'D
3	062556	REVISED NOTE	16-MAR-2007	T. Takekita	E. Matsumoto	-	A. Onogawa



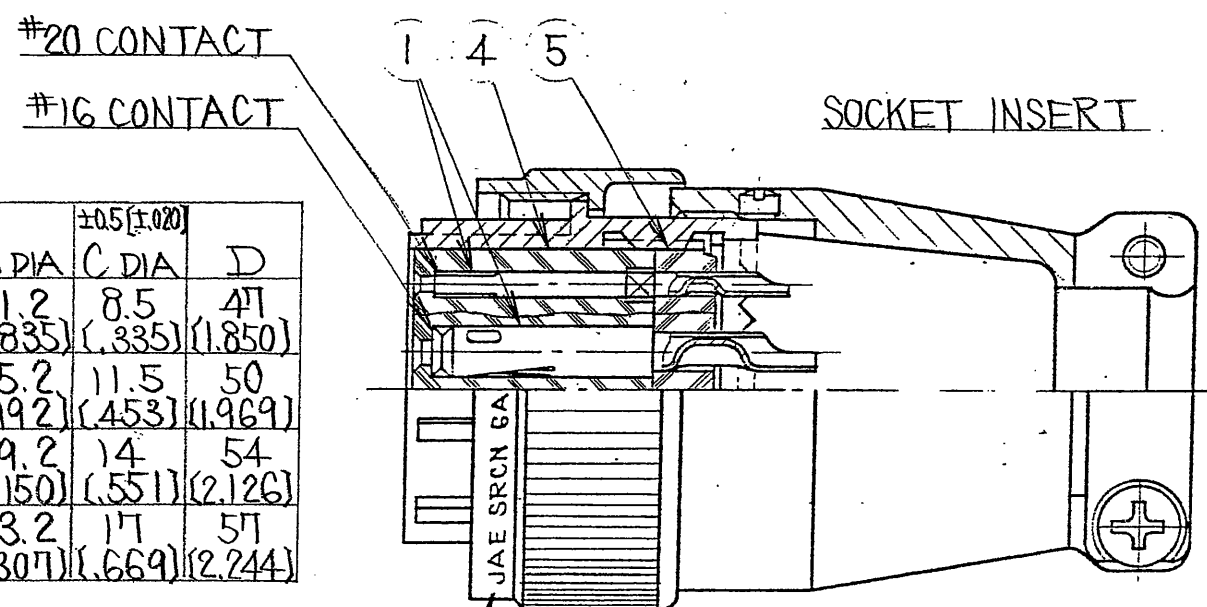
IDENTIFICATION

SRCN 6 A * - * * *
(OMIT FOR NORMAL)
ALTERNATE INSERT POSITION
CONTACT TYPE: P-PIN CONTACT, S-SOCKET CONTACT
NUMBER OF CONTACTS
SHELL SIZE
CLASS
SHELL STYLE
SERIES PREFIX

NOTES

- 1. METAL STAMPS "JAE" "SRCN 6A * - * * *".
- 2. FOR AVAILABLE INSERT ARRANGEMENTS, ALTERNATE POSITIONS, ELECTRICAL SPECIFICATIONS AND CONTACT SIZE, REFER TO SJ014069 OR CONSULT FACTORY.
- 3. IDENTIFICATION PER JIS C 5432 AS FOLLOWS.

CNROISP * 0 * 0 * * *
(OMIT FOR NORMAL)
CONTACT TYPE: M-PIN CONTACT, F-SOCKET CONTACT
SHELL SIZE
ALTERNATE INSERT POSITION
NUMBER OF CONTACTS



SHELL SIZE	A THREAD	B DIA	C DIA	D
13	M18 P1	21.2 (.835)	8.5 (.335)	47 (1.850)
16	M22 P1	25.2 (.992)	11.5 (.453)	50 (1.969)
21	M26 P1	29.2 (1.150)	14 (.551)	54 (2.126)
25	M30 P1	33.2 (1.307)	17 (.669)	57 (2.244)

REQUIREMENTS

TEMPERATURE -25°C ~ +85°C
RELATIVE HUMIDITY 85 % MAX
INSULATION RESISTANCE 1000 MΩ MIN
(AT DC500V)

10	SCREWS PAN HEAD	2	STEEL	NICKEL PLATING	
9	SADDLE CLAMP	1	ALUMINUM ALLOY	SATIN NICKEL PLATING	
8	ENDBELL	1	ALUMINUM ALLOY	SATIN NICKEL PLATING	
7	SLOTTED SET SCREW	1	STEEL	NICKEL PLATING	COLOR: BLACK
6	RING RETAINING	1	COPPER ALLOY	NICKEL PLATING	
5	INSULATOR REAR	1	PLASTIC	NONE	UL FLAME CLASS 94V-0
4	INSULATOR FRONT	1	PLASTIC	NONE	UL FLAME CLASS 94V-0
3	NUT COUPLING	1	ALUMINUM ALLOY	SATIN NICKEL PLATING	
2	BARREL	1	ALUMINUM ALLOY	SATIN NICKEL PLATING	
1	CONTACTS		COPPER ALLOY	SILVER PLATING	SEE NOTE 2

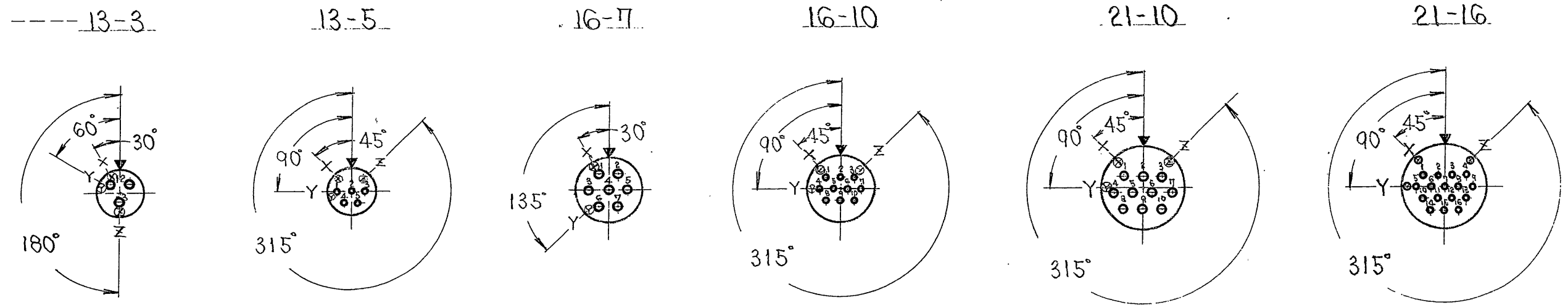
NEXT ASS'Y	USED ON	NEXT ASS'Y	FINAL ASS'Y
APPLICATION		QTY REQ'D	

UNLESS OTHERWISE SPECIFIED			DATE	5-26-1981
DIMENSIONS ARE IN MILLIMETERS			DRAWN	M. Komatsu
TOLERANCES ON: [INCHES]			CHECKED	T. Onoue, M. Takagi
FRACTIONS	DECIMALS	ANGLES	APP'D	E. Matsumoto
	±.2 (±.009)	±.08 (±.003)	±.02 (±.008)	±1/2
TREATMENT OR FINISH			APP'D	T. Yajima

TITLE		JAE-CONNECTOR.COM	
CONNECTOR, PLUG		Reference Only	
ELECTRICAL, STRAIGHT		JAPAN AVIATION ELECTRONICS IND. CO. LTD. FACTORY	
SRCN 6 A		NAKAGAMI-CHO, AKISHIMA-SHI TOKYO, JAPAN	
SCALE	NONE	DWG. NO.	SJ016062-E
DWG. SIZE	B	WT.	
SHEET			

DWG. NO.	SYM.	SYM.	DCN NO.	DESCRIPTION	DATE	DRAWN	CHECKED	APP'D	APP'D
SJ.014069-E	3	2	DCN-14326	Add SRCN	81.5.26	M. Komatsu	M. Komatsu	M. Komatsu	T. Yajima
		3	062556	REVISED SPECIFICATION	2007.3.16	t. takesita	g. matsumoto	-	A. Onogawa

INSERT
ARRANGEMENT



OPERATING CURRENT --- 10A
CONTACT SIZE ----- #16

5A
#20

10A
#16

5A
#20

10A
#16

5A
#20

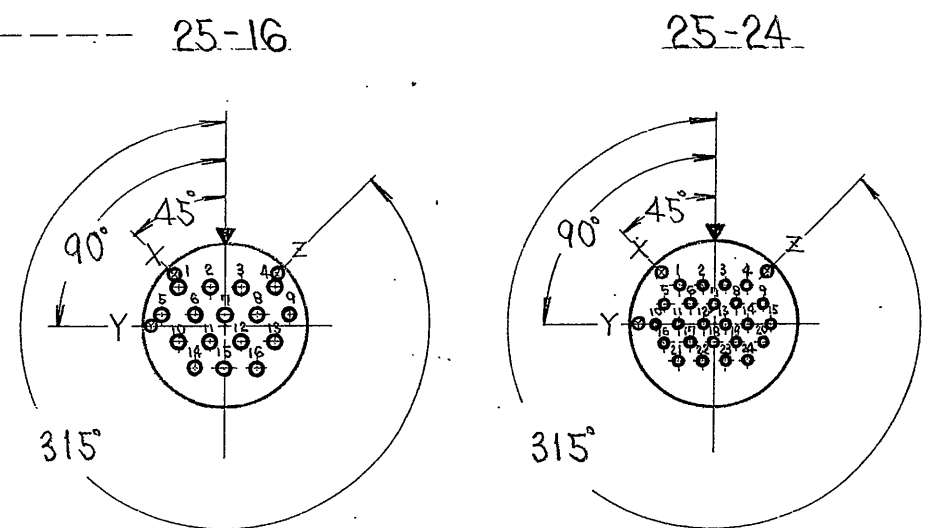
SERVICE RATING

WITHSTANDING VOLTAGE AC 1000 V.r.m.s. (FOR 1 MINUTE)
INSULATION RESISTANCE 1000 MΩ MIN (AT D.C. 500V)

NOTES

1. ALL INSERT LAYOUTS ARE SHOWN IN FRONT-VIEW FROM ENGAGING FACE OF PIN INSERT (SOCKET INSERT OPPOSITE).
2. ▼ INDICATES LOCATION OF CENTERLINE OF KEY OR KEY WAY OF SHELLS IN FIXED NORMAL POSITION. FOR ALTERNATE INSERT POSITIONS, INSERT IS ROTATED AS SHOWN BY ARROW AND LETTERS.

INSERT
ARRANGEMENT



OPERATING CURRENT ----- 10A
CONTACT SIZE ----- #16

5A
#20

				ITEM	DESCRIPTION	Q'TY	MATERIAL	FINISH	PART NO.		
				UNLESS OTHERWISE SPECIFIED DIMENSIONS ARE IN INCHES TOLERANCES ON:		DATE 10-11-1974	TITLE JAE-CONNECTOR.COM Reference Only INSERT ARRANGEMENTS SRC AND SRCN ELECTRICAL CONNECTORS			JAPAN AVIATION ELECTRONICS IND. CO. LTD. FACTORY NAKAGAMI-CHO, AKISHIMA-SHI TOKYO, JAPAN	
FRACTIONS		DECIMALS		ANGLES	DRAWN M. Sugita	DWG. NO. SJ 014069-E					
				±1/2	CHECKED M. Yajima	SHEET					
					APP'D g. matsumoto						
					APP'D A. Onogawa						
TREATMENT OR FINISH						SCALE X1		DWG. SIZE B	WT.		
NEXT ASS'Y		USED ON		NEXT ASS'Y		FINAL ASS'Y					
APPLICATION				QT'Y REQ'D							