



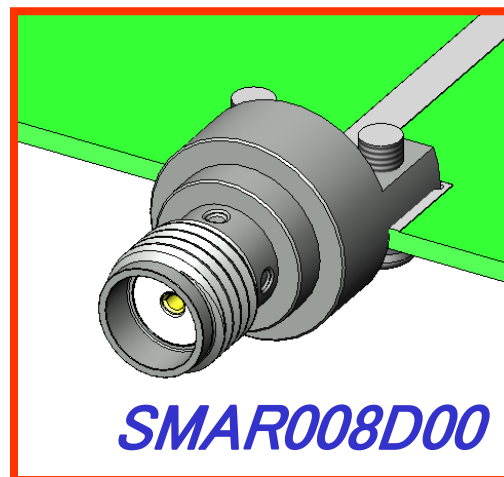
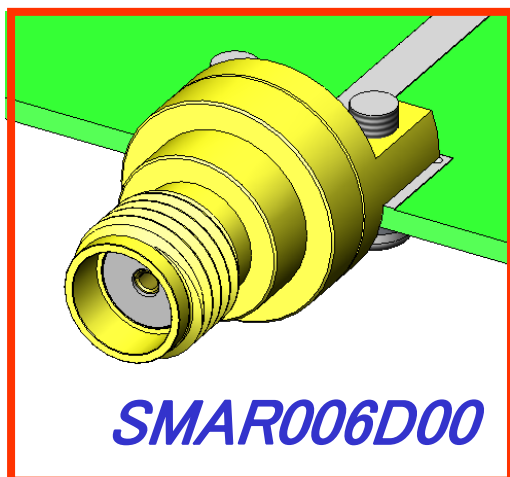
High-frequency Compatible
SMA (IEC60169-15) Coaxial Connectors

CONNECTOR

MB-0145-3

November 2011

End-launch SMA

RoHS Compliant

The End-launch SMA is a connector compatible with SMA (IEC60169-15). It is available in a high-performance version (SMAR006D00), which is compatible with high-frequency band up to 20GHz when mounted on the board, and a low-cost version (SMAR008D00) which is compatible with frequency up to 6GHz when mounted on the board.

It is ideal for mobile phone and PHS base stations, wireless LAN access points, wireless communication equipment, and other high-frequency devices and modules that require high reliance. It is also perfect for use in high-frequency band measuring devices, such as those for transmission characteristics.

Features

- Compatible with high-frequency band up to 20GHz (SMAR006D00) when mounted on board.
(Adjustment of board mounting area dimensions may be required.)
- Easy mounting and repair made possible by the outer conductor of connector being screwed to the board without soldering.
- Compatible with all board thickness.
(Can be applied by selecting length of screw applicable to board thickness.)
- Connection configuration for easy soldering of signal contacts.
- Compatible with high density mounting. Maximum width 11mm.

Application

Mobile phone/PHS base stations, wireless LAN access points, wireless communication equipment, broadcasting equipment, measuring equipment, high frequency module, wireless power amplifiers, transmission characteristic measuring devices, RFID (IC tag, automatic identification), etc.

General Specifications

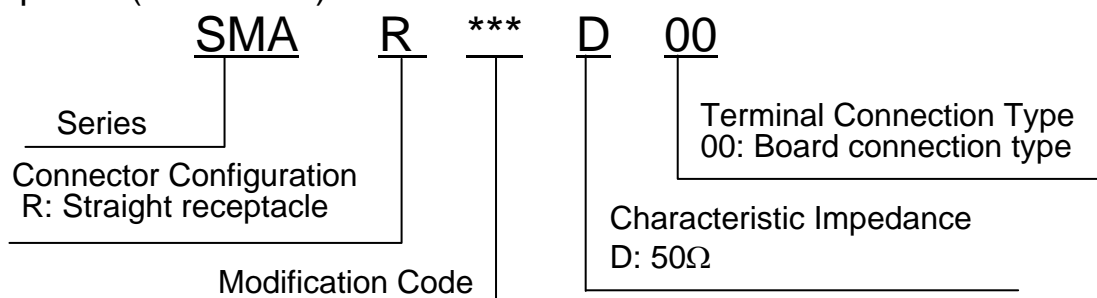
	SMAR006D00	SMAR008D00
Characteristic Impedance	50Ω	
Applicable Frequency	DC~20GHz	DC~6GHz
V.S.W.R.	1.05+0.015xf (GHz) max.	1.2 (max.)
Rated Current	DC0.5A	
Rated Voltage	AC250Vr.m.s.	
Operating Temperature	-40 Deg. C ~ +85 Deg. C	
Contact Resistance	Initial: 4m Ω max. (After test: 10m Ω max.)	
Dielectric Withstanding Voltage	AC500Vr.m.s., 1 minute	
Insulation Resistance	500M Ω min. (DC500V)	
Repeated Operation	500 times	200 times

Materials and Finishes

Component		SMAR006D00	SMAR008D00
Insulator		4 Ethylene fluoride	
Signal Contact (Center Conductor)		Phosphor bronze / Au plating over Ni	
Outer Conductor (Earth Contact)	Mating Area	Brass / Au plating over Ni	Brass / Ni plating
	Board Connection Area	Phosphor bronze / Au plating over Ni	Brass / Ni plating

Ordering Information

■Receptacle (board side)

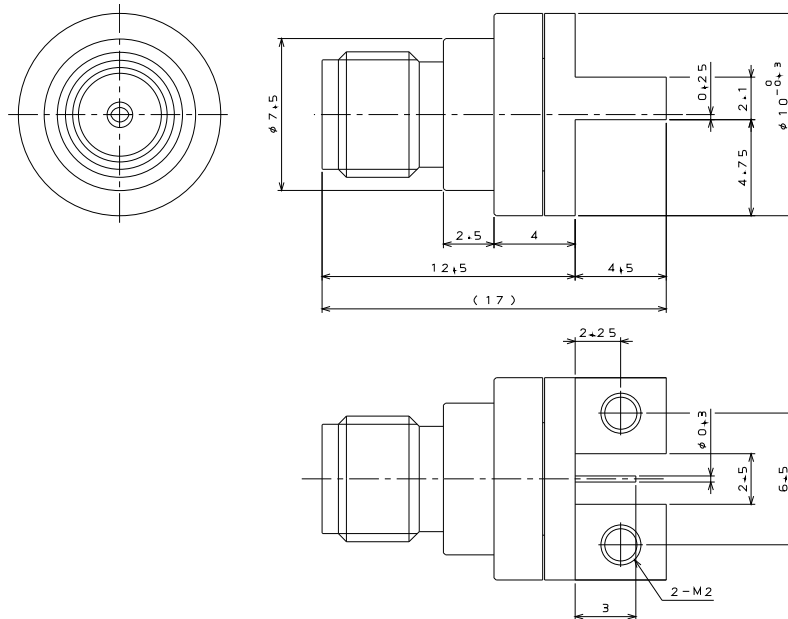


Technical Information

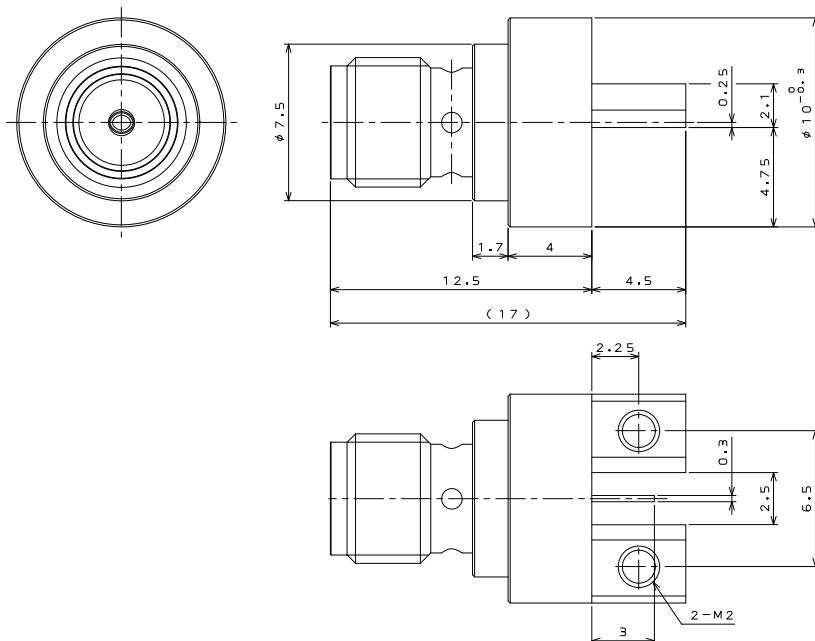
Part Number	SMAR006D00	SMAR008D00
Drawing	SJ105518	SJ112028
Specification	JACS-20061	JACS-20118

Dimensions

SMAR006D00



SMAR008D00



Notice: Products shown in this brochure are made for the applications listed below. However, if the above-mentioned products are to be used in aerospace devices, marine cable-connection devices, atomic power control systems, medical equipment for life-support systems, or any other specific application requiring extremely high reliability, please contact JAE for further information.

Recommended applications: Computers, Office machines, Measuring devices, Telecommunication devices (Terminals, Mobile devices), AV devices, Household applications, FA devices, etc.

Japan Aviation Electronics Industry, Limited

Product Marketing Division

Aobadai Building, 3-1-19, Aobadai, Meguro-ku, Tokyo 153-8539

Phone: +81-3-3780-2787 FAX: +81-3-3780-2946

* The specifications in this brochure are subject to change without notice. Please contact JAE for information.