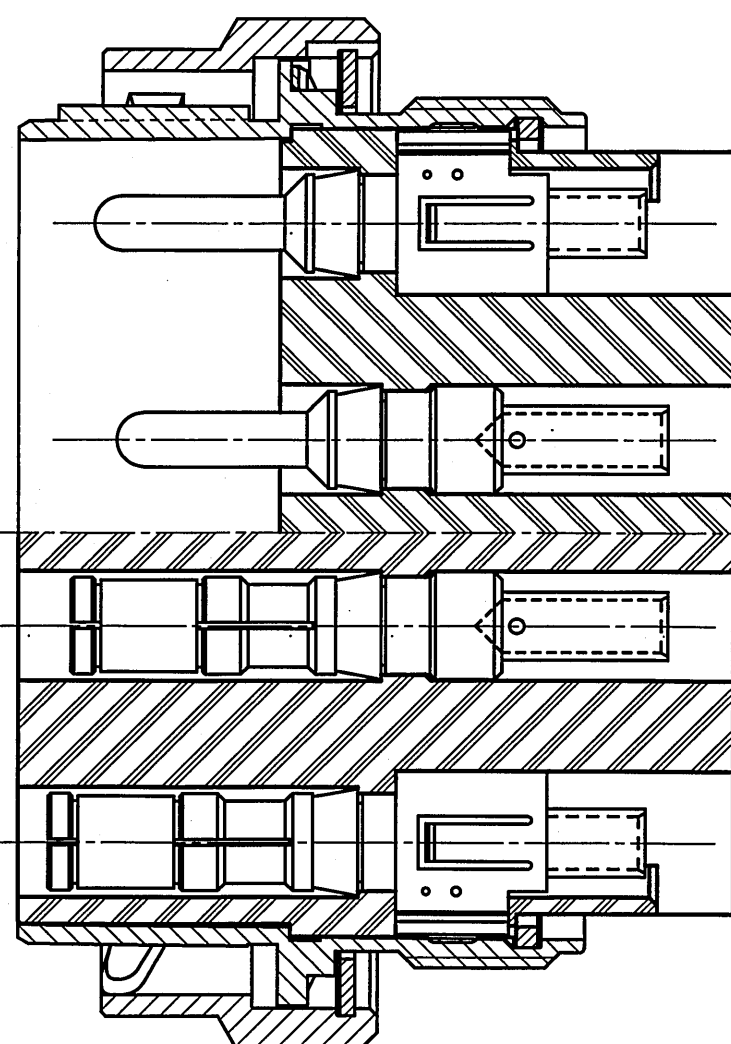
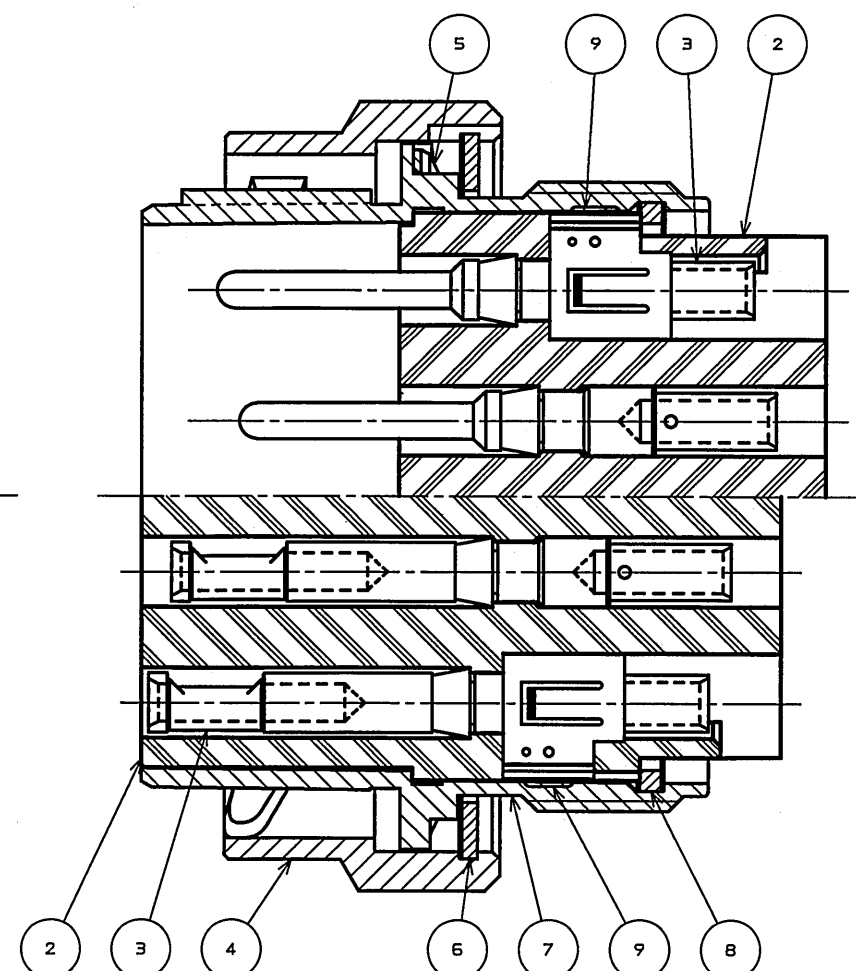


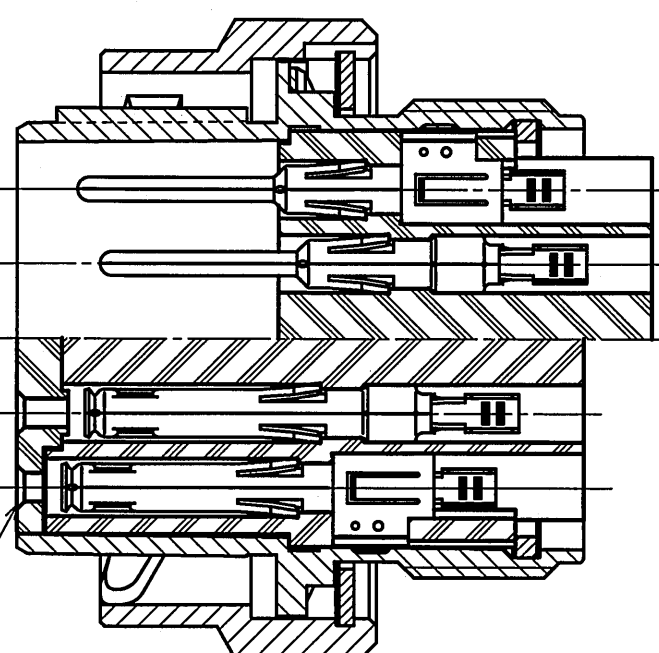
★INSERT OF #8 CONTACTS



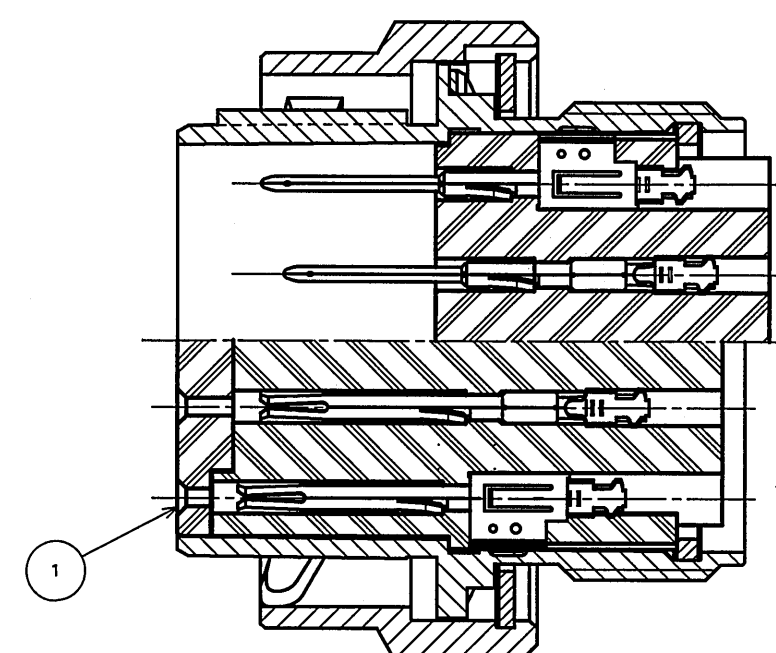
★INSERT OF #12 CONTACTS



★INSERT OF #16 CONTACTS



★INSERT OF #20 CONTACTS



## 命名法

J L 05-6A22-14\*PC\*-FO-F

SERIES PREFIX  
シリーズ名

6:STRAIGHT PLUG  
6:プラグ

A:THE STRUCTURE OF WATERPROOF  
A:防水構造

SHELL SIZE: 18, 20, 22, 24, 28  
シェルサイズ: 18, 20, 22, 24, 28

INSERT ARRANGMENT (NOTE 2)  
インサート配列名

CONTACT TYPE

```

PC:GRIMP TYPE OF PIN CONTACT
SC:GRIMP TYPE OF SOCKET CNTCT
P :SOLDER TYPE OF PIN CONTACT
S :SOLDER TYPE OF SOCKET CNTCT

PO : クリンプピンコンタクト
SO : クリンプソケットコンタクト
P : 半田用ピンコンタクト
S : 半田用ソケットコンタクト

```

ALTERNATE INSERT POSITIONS: W, X, Y, Z, V  
STANDARD: NORMAL POSITION  
インサート回転位置: W, X, Y, Z, V  
無し: 標準位置

FO: LESS CONTACTS  
FO:コンタクト無し

R: SUFFIX  
R: 特殊記号

TABLE 1 【DIMENSIONS】

SHELL SIZE	$\phi A \pm 0.8$	$\phi B \pm 0.2$	V THREAD
1 8	35.9	23.5	1-20UNEF-2A
2 0	40.6	26.9	1 1/8-18UNEF-2A
2 2	42.2	29.6	1 1/4-18UNEF-2A
2 4	45.4	32.8	1 3/8-18UNEF-2A
2 8	51.7	39	1 5/8-18UNEF-2A

CONTACT SIZE	L MIN.	
	PIN INSERT	SOCKET INSERT
# 8	48	
# 12	46	43
# 16	43	38
# 20	40	37.5

TABLE 2 【INSERT ARRANGMENT】 (NOTE 2)

SHELL SIZE	CONTACT SIZE	# 8	# 12	# 16	#20
1 8	NO. OF CONTACT	_____	5	10	19
	INSERT ARRENGMENT	_____	18-11	18- 1	18-19A
	DWG. NO.	_____	SJ024904	SJ025293	SJ025297
2 0	NO. OF CONTACT	_____	7	17	30
	INSERT ARRENGMENT	_____	20-15	20-29	20-30A
	DWG. NO.	_____	SJ025291	SJ025294	SJ025298
2 2	NO. OF CONTACT	4	8	19	_____
	INSERT ARRENGMENT	22-22	22-23	22-14	_____
	DWG. NO.	SJ024906	SJ025292	SJ024905	_____
2 4	NO. OF CONTACT	7	_____	24	52
	INSERT ARRENGMENT	24-10	_____	24-28	24-52A
	DWG. NO.	SJ024907	_____	SJ025295	SJ025299
2 8	NO. OF CONTACT	_____	_____	37	73
	INSERT ARRENGMENT	_____	_____	28-21	28-73A
	DWG. NO.	_____	_____	SJ025296	SJ026288

TABLE 3 【CRIMP TYPE CONTACTS】 (NOTE 3)

CONTACT SIZE	PIECE	CONTACT PART NUMBERS				TYPE	APPLICABLE WIRE
		PIN CONTACT	DWG. NO.	SOCKET CONTACT	DWG. NO.		
# 8	INDIVIDUAL	CONT-JL05-08P-C1	SJ025430	CONT-JL05-08S-C1	SJ025431	MACHINE	AWG# 8~10(8mt~5.5mt)
		CONT-JL05-08P-C2		CONT-JL05-08S-C2			AWG#10~12(5.5mt~3.5mt)
# 12	INDIVIDUAL	CONT-JL05-12P-C1	SJ025428	CONT-JL05-12S-C1	SJ025429	MACHINE	AWG#12~16(3.5mt~1.25mt)
# 16	INDIVIDUAL	ST-JL05-16P-C1	SJ025424	ST-JL05-16S-C1	SJ025425	STAMPE	AWG#14~16(2mt~1.25mt)
		ST-JL05-16P-C2		ST-JL05-16S-C2			AWG#16~20(1.25mt~0.5mt)
		ST-JL05-16P-C3		ST-JL05-16S-C3			AWG#20~24(0.5mt~0.2mt)
	REELS OF 3500	ST-JL05-16P-C1-3500	SJ025426	ST-JL05-16S-C1-3500	SJ025427	STAMPE	AWG#14~16(2mt~1.25mt)
		ST-JL05-16P-C2-3500		ST-JL05-16S-C2-3500			AWG#16~20(1.25mt~0.5mt)
		ST-JL05-16P-C3-3500		ST-JL05-16S-C3-3500			AWG#20~24(0.5mt~0.2mt)
# 20	INDIVIDUAL	ST-JL05-20P-C1	SJ025420	ST-JL05-20S-C1	SJ025421	STAMPE	AWG#18~22(0.8mt~0.3mt)
		ST-JL05-20P-C2		ST-JL05-20S-C2			AWG#22~26(0.3mt~0.13mt)
	REELS OF 10000	ST-JL05-20P-C1-10000	SJ025422	ST-JL05-20S-C1-10000	SJ025423	STAMPE	AWG#18~22(0.8mt~0.3mt)
		ST-JL05-20P-C2-10000		ST-JL05-20S-C2-10000			AWG#22~26(0.3mt~0.13mt)

NOTE 1. COMPANY LOGO "JAE" & PART NUMBER ARE  
MARKED AS INDICATED.

"-FO" AND "-R" ARE NOT MARKED.

2. FOR INSERT ARRANGMENT, SEE TABLE 2.

3. FOR APPLICABLE CONTACTS, SEE TABLE 3.

4. THIS MARK (☷) INDICATES EARTH.


1. 図示の位置に“社名”及び“品名”を表示する。  
但し、品名末尾の“-FQ”及び“-R”は表示しない。

2. インサート配列は表2による。

3. 適合コンタクトは表3による.

4. このマーク  は保護回路接続を表わす。

9	EARTH LUG	1	COPPER ALLOY	SILVER PLATING	_____
8	RETAINING RING	1	COPPER ALLOY	ZINC PLATING	_____
7	BARREL	1	ALUMINUM ALLOY	ZINC PLATING	_____
6	O-TYPE RING	1	STAINLESS STEEL	_____	_____
5	WAVE SPRING	1	STAINLESS STEEL	_____	_____
4	COUPLING NUT	1	ALUMINUM ALLOY	ZINC PLATING	_____
3	CONTACT	_____	COPPER ALLOY	SILVER PLATING	NOTE 2, 3
2	BASE INSULATOR	1	SYNTHETIC RESIN	_____	_____
1	COVER INSULATOR	1	SYNTHETIC RESIN	_____	INSULATOR FOR #16 & #20 SOCKET CONTACTS

符号 NO.	名称 DESCRIPTION	个数 QTY.	材料 MATERIAL	仕上 FINISH	備考 REMARKS
仕様書 (SPECIFICATION)		第1版 (ORIGINAL DATE) 6.Jan.2006		尺度 (SCALE) 1:1	シリーズ (SERIES) JL05
JAOS-5071		数量 DR.	—	名称 (TITLE) JL05-6A**	日本航空電子工業株式会社 JAPAN AVIATION ELECTRONICS INDUSTRY, LTD.
公差 (GENERAL TOLERANCE)		指定 CHK.	N.SASANO	— * * * * * — * * * * *	
寸法 (DIMENSION)	角度 (ANGLES)	盗用 APPD.	E. Matsumoto	(STRAIGHT PLUG)	
. ± 0.8	° ±	承認 APPD.	A. Omegawa	質量 (MASS)	
.X ± 0.4	°X ±			図面番号 (DRAWING NO.) SJ105243	
.XX ± 0.1					版数 (REV.) 1
.XXX ±					

SYM.	DCN NO.	DESCRIPTION	DATE	DRAWN	CHECKED	APP'D	APP'D
------	---------	-------------	------	-------	---------	-------	-------

DESIGNATION

JL05-24-28\*E\*

SERIES PREFIX

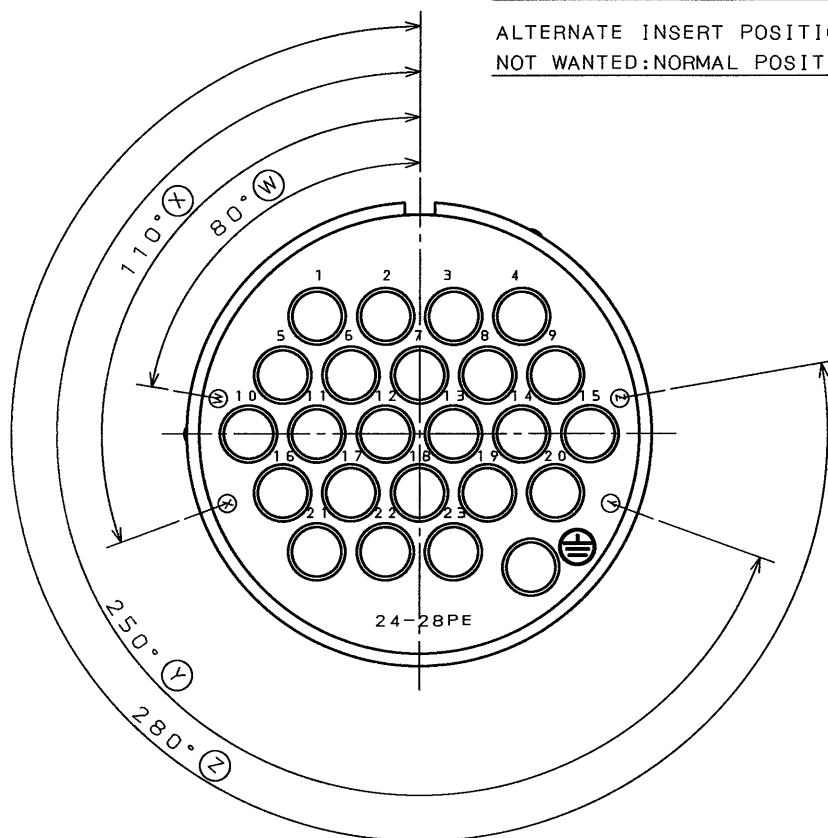
INSERT ARRANGEMENT

PE:PIN INSERT

SE:SOCKET INSERT

ALTERNATE INSERT POSITIONS:W, X, Y, Z

NOT WANTED:NORMAL POSITION



SPECIFICATION

CONTACT : SIZE #16X24  
DIELECTRIC  
WITHSTANDING VOLTAGE : AC.1000Vr.m.s.  
INSULATION RESISTANCE: 5000MΩ MIN.  
(TEST VOLTAGE DC.500V)

NOTE 1.THIS DRAWING SHOWS PIN ENGAGING FACE.

NOTE 2.IN THE CASE OF SOCKET ENGAGING FACE,  
THEIR ARRANGEMENT,POSITIONS OF LETTERS  
AND ALTERNATE ANGLES ARE REVERS

ITEM	DESCRIPTION	Q'TY	MATERIAL	FINISH	REMARKS
UNLESS OTHERWISE SPECIFIED: JACS-5071-E		DATE	TITLE		
DIMENSIONS ARE IN MILLIMETERS		21. Apr. '95	JAE-CONNECTOR.COM JL05-24-28*E* Reference Only JAPAN AVIATION ELECTRONICS INDUSTRY, LTD. MUSASHINO, AKISHIMA-SHI TOKYO, JAPAN		
		DRAWN			
		H. SAKURADA			
		CHECKED			
		S. NANAQ			
TOLERANCES ON : (INCHES)		APP'D	INSERT ARRANGMENT		
		T. MORITA			
FRACTIONS	DECIMALS	ANGLES	APP'D	SERIES	SCALE
			M. Takagi	JL05	
					DWG. NO.
					SJ025295-E