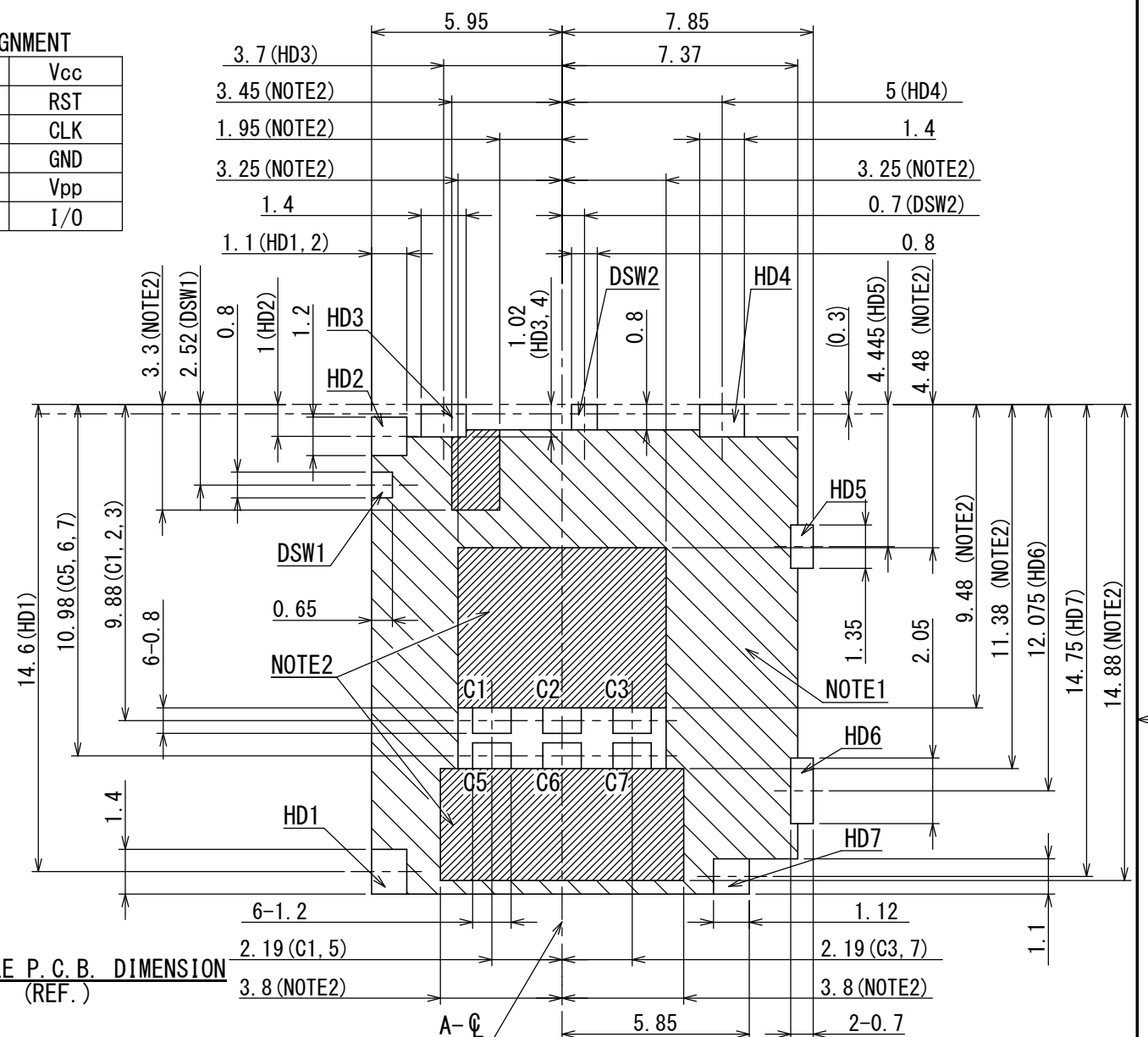
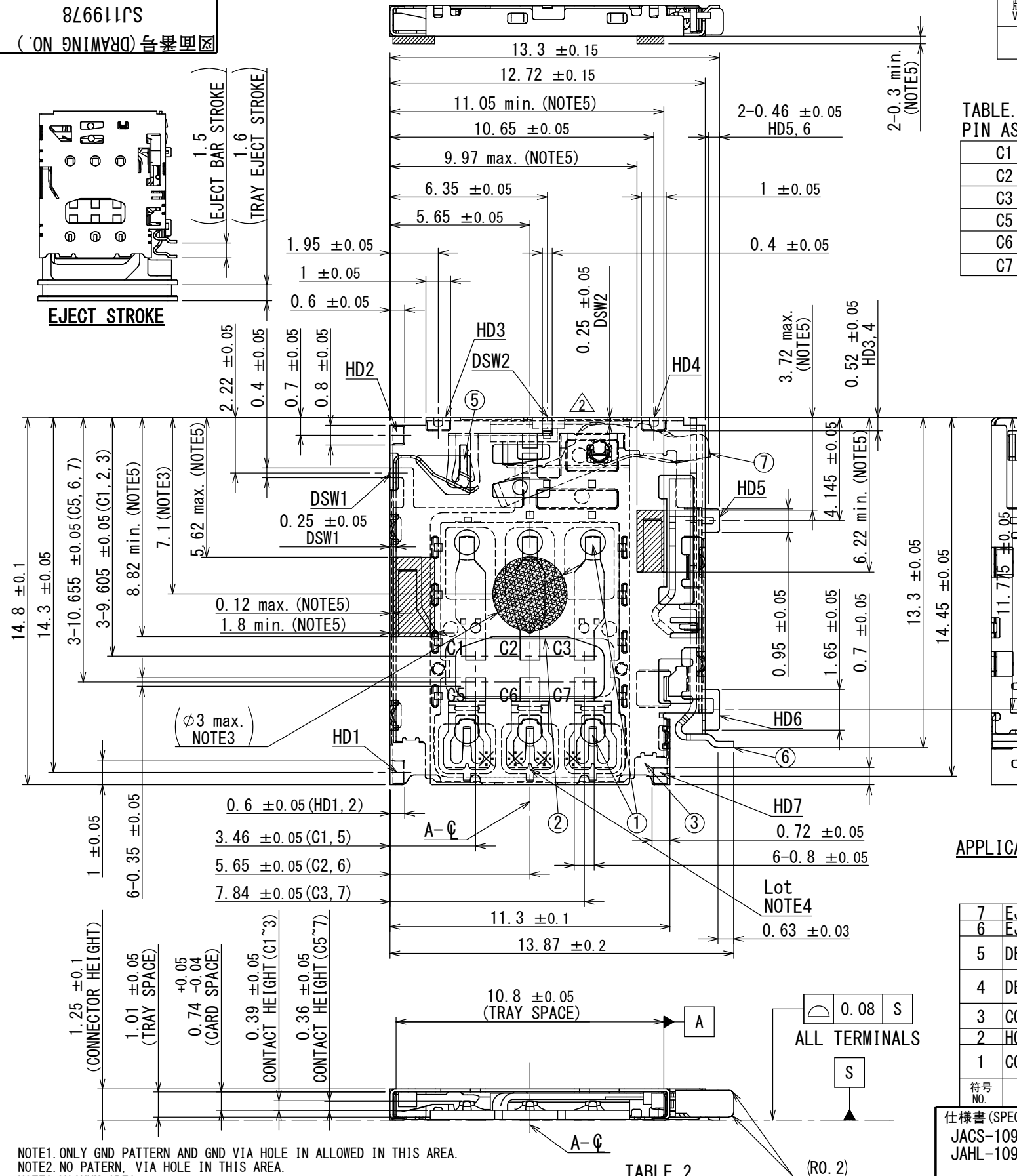


| | |
|----|-----|
| C1 | Vcc |
| C2 | RST |
| C3 | CLK |
| C5 | GND |
| C6 | Vpp |
| C7 | I/O |





APPLICABLE P. C. B. DIMENSION
(REF.)

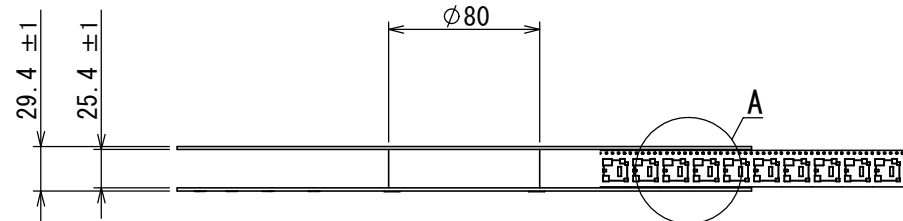
| | | | | | |
|-----------|--------------------|------------|------------------|---|----------------|
| 7 | EJECT LEVER | 1 | STAINLESS STEEL | | |
| 6 | EJECT BAR | 1 | STAINLESS STEEL | | |
| 5 | DETECTION SW2 | 1 | COPPER ALLOY | CONTACT: Au OVER Ni TERMINAL: Au OVER Ni | |
| 4 | DETECTION SW1 | 1 | COPPER ALLOY | CONTACT: Au OVER Ni TERMINAL: Au OVER Ni | |
| 3 | COVER FRAME | 1 | STAINLESS STEEL | TERMINAL: Au OVER Ni | |
| 2 | HOUSING | 1 | GLASS FILLED LCP | - | |
| 1 | CONTACT | 1 | COPPER ALLOY | CONTACT: Au OVER Ni TERMINAL: Au OVER Ni | |
| 符号 NO. | 名 称 DESCRIPTION | 個 数 QTY | 材 料 MATERIAL | 仕 上 FINISH | 備 考 REMARKS |

TABLE. 2
CIRCUIT

| | WITHOUT TRAY | TRAY MATED |
|-----|--------------|------------|
| DSW | | |

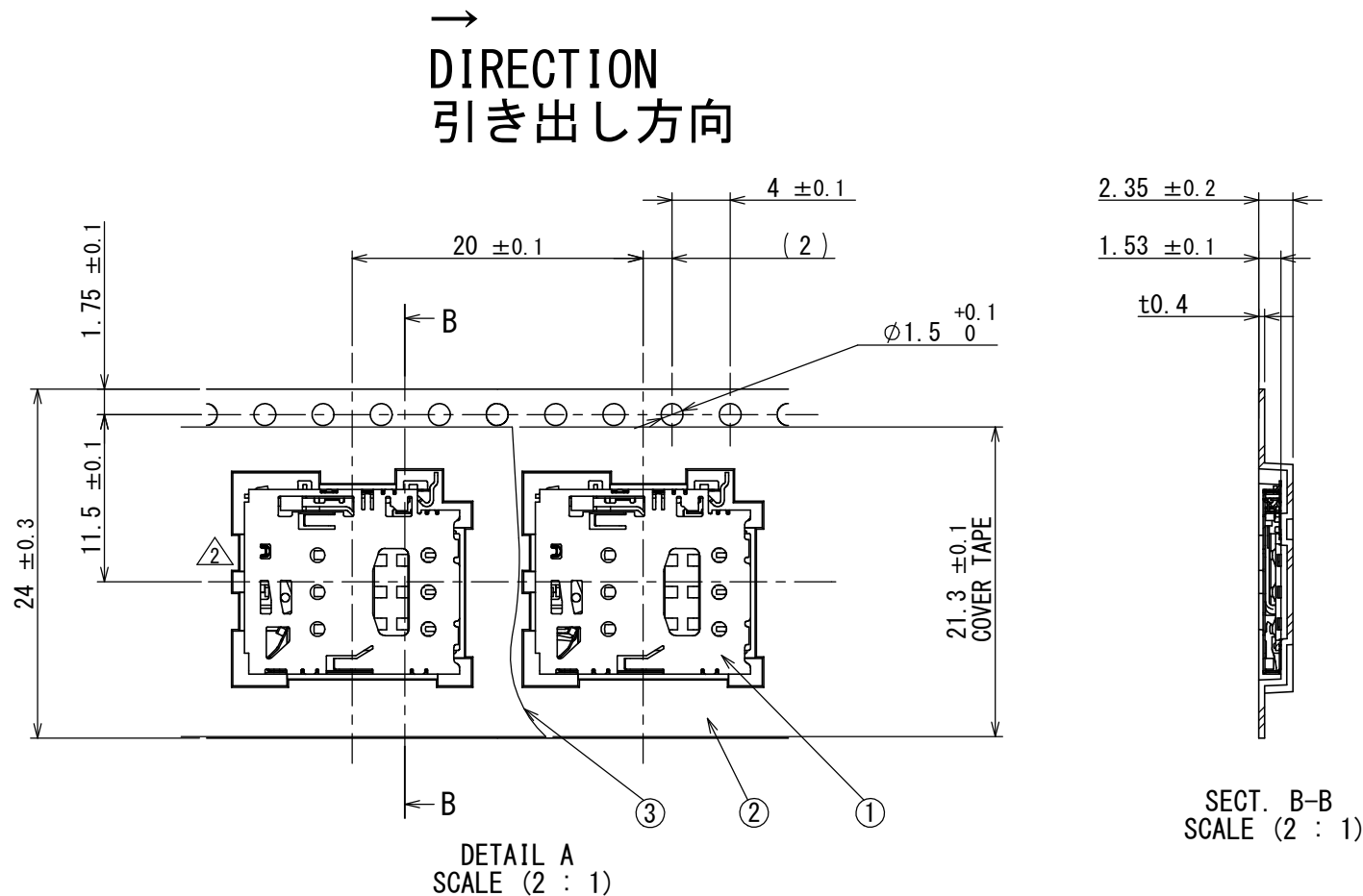
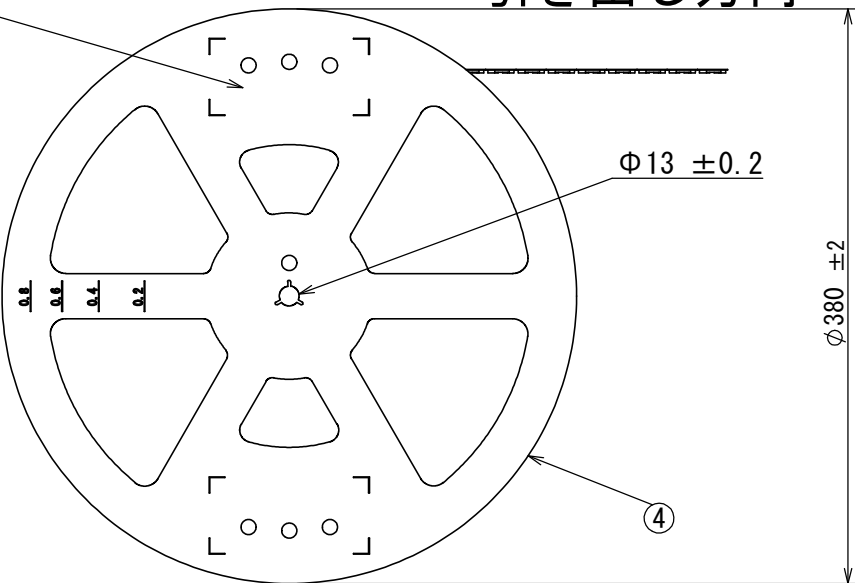
| | | | | | | | | | | |
|------------------------------|--|---------------------|--|---------------------------|--|---|--|---|--|-----------|
| 仕様書 (SPECIFICATION) | | 第1版 (ORIGINAL DATE) | | 尺度 (SCALE) | | シリーズ (SERIES) | | 日本航空電子工業株式会社 | | SIZE A3 |
| JACS-10953-01 J AHL-10953 | | 01/MAR/2018 | | 5 : 1 | | SF70 | | | | |
| 一般公差 (GENERAL TOLERANCE) | | 製図 DR. | | 名称 (TITLE) SF70S006VBB | | | |  JAPAN AVIATION ELECTRONICS INDUSTRY, LTD. | | |
| | | 担当 CHK. K. KUME | | | | | | | | |
| | | 査閲 APPD. - | | | | | | | | |
| | | 承認 APPD. M. SHIMADA | | | | | | | | |
| 寸法 (DIMENSION) | | 角度 (ANGLES) | | 質量 (MASS) | |  | | 図面番号 (DRAWING NO.) | | 版数 (VER.) |
| . ±0.8 | | ×° ± | | | | | | SJ119978 | | 2 |
| . × ±0.4 | | ×°×' ± | | | | | | | | |
| . ×× ±0.1 | | | | | | | | | | |
| . ××× ± | | 単位 (UNIT) : mm | | | | | | | | |

| 版数 VER. | 年月日 DATE | CN NO. | 変更内容 DESCRIPTION | 製図 DR. | 担当 CHK. | 査閲 APPD. | 承認 APPD. |
|------------|-------------|--------|---------------------|-----------|------------|-------------|-------------|
| 2 | 09/JAN/2020 | 032839 | Changed form | | K. KUME | - | M. SHIMADA |

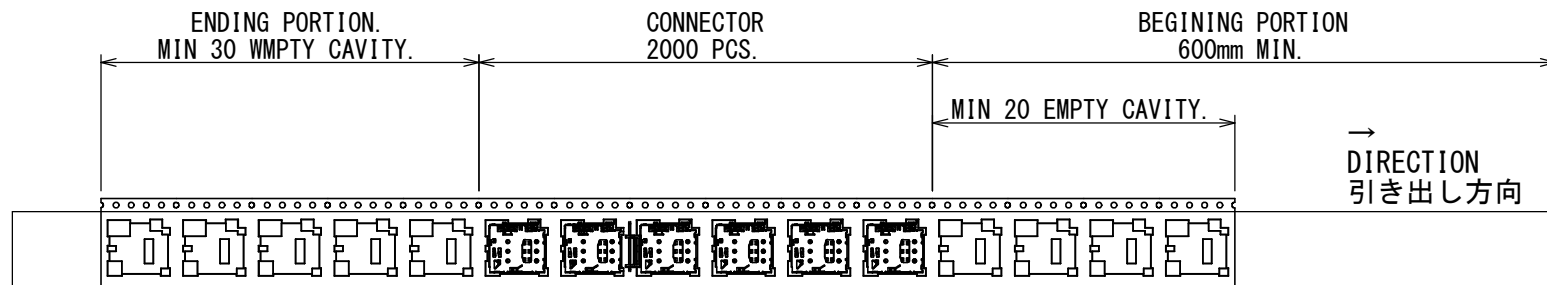


DIRECTION
引き出し方向

注1



SECT. B-B
SCALE (2 : 1)



NOTE1. SUFFIX“SF70S006VBBR2000” OF THE PART NUMBER INDICATES THAT 2000 PCS. OF SF70S006VBB CONNECTORS ARE ACCOMODATED IN ONE REEL.
2. THE LABEL IS TO BE ATTACHED ON THE MAGAZINE AS SHOWN.
3. REFER TO THE DRAWING. SJ119978 (SF70S006VBB) FOR THE DIMENSION OF THE CONNECTOR.

注1. “SF70S006VBBR2000” は収納数2000個入りのリールに収納された品名を表す。
2. 図示の位置に下記のシールを貼り
品名、収納数、ロットNo. 及びテープの幅と送りピッチを記入すること。
3. コネクタ寸法は SJ119978 (SF70S006VBB) 参照。

NOTE2
DESCRIPTION: SF70S006VBBR2000
QTY : 2000
LOT NO : 3125 (YMDD)
EMBOSS CODE: TB2420

| 4 | REEL | 1 | PS | - | |
|-----------|--------------------|-------------|-----------------|---------------|----------------|
| 3 | COVER TAPE | 1 | PET | - | |
| 2 | CARRIER TAPE | 1 | PS | - | |
| 1 | CONNECTOR | 2000 | - | - | SJ119978 |
| 符号 NO. | 名 称 DESCRIPTION | 個 数 QTY. | 材 料 MATERIAL | 仕 上 FINISH | 備 考 REMARKS |

| | | | | | | | | | | | |
|---|--|--|--|------------------------------------|--|-----------------------|--|--|--|------------------------------------|--------------------|
| 仕様書 (SPECIFICATION) JACS-10953-01 JABL-10953 | | 第1版 (ORIGINAL DATE) 01/MAR/2018 | | 尺度 (SCALE) 1 : 5 | | シリーズ (SERIES) SF70 | | 日本航空電子工業株式会社 | | 図面番号 (DRAWING NO.) SJ119979 | 版数 (VER.) 2 |
| 一般公差 (GENERAL TOLERANCE) 寸法 (DIMENSION) ± 0.8 × ± 0.4 ×× ± 0.1 ××× ± | | 担当 CHK. K. KUME 査閲 APPD. - 承認 APPD. M. SHIMADA | | 名称 (TITLE) SF70S006VBBR2000 | | | | JAE JAPAN AVIATION ELECTRONICS INDUSTRY, LTD. | | | |
| 角度 (ANGLES) ×° ± ×°×' ± 単位 (UNIT) : mm | | | | 質量 (MASS) | | | | | | | |