

Smart Textile Connector

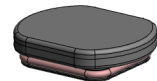
RK01 Series

CONNECTOR

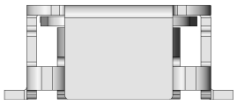
MB-0355-3

Jun 2025

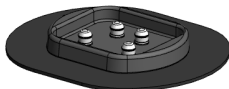
RoHS Compliant



Transmitter



Receptacle Terminal  
(General parts)



Textile side connector

The RK01 Series is a connector ideal for smart textile applications. It is a user-friendly connector which adopts a snap-button type structure that is widely used in apparel products. It is also compatible with domestic washing specification required for clothes.

Applications

For products in various markets using smart textiles, such as smart clothing

Features

- Washable in a home washing machine
- Proprietary contact structure which allows for multiple circuits to be attached and detached in one action
- Highly versatile supporting a wide variety of conductive materials and pin counts
- Waterproof when the transmitter is mated

General Specifications

Operating Temperature Range	-20 deg. C to +50 deg. C
Number of Contacts	2 positions or more
Contact Resistance	Initial: 1Ω max., After test: 5Ω max.
Durability	1,000 times
Wash Test	JIS L 1930 (C4G) (Japanese washing test procedures for textile)

Materials and Finishes

General Parts	Material	Customized Parts	Material
Plug Contact	Alloy	Bottom Insulator	PC
Receptacle Contact	Alloy	Top Insulator	PC, others

Ordering Information

RK01

Series

P: Plug  
S: Receptacle

Number of Contacts

\*

001

\*

Z

\*

R

\*\*\*\*

Modification Code

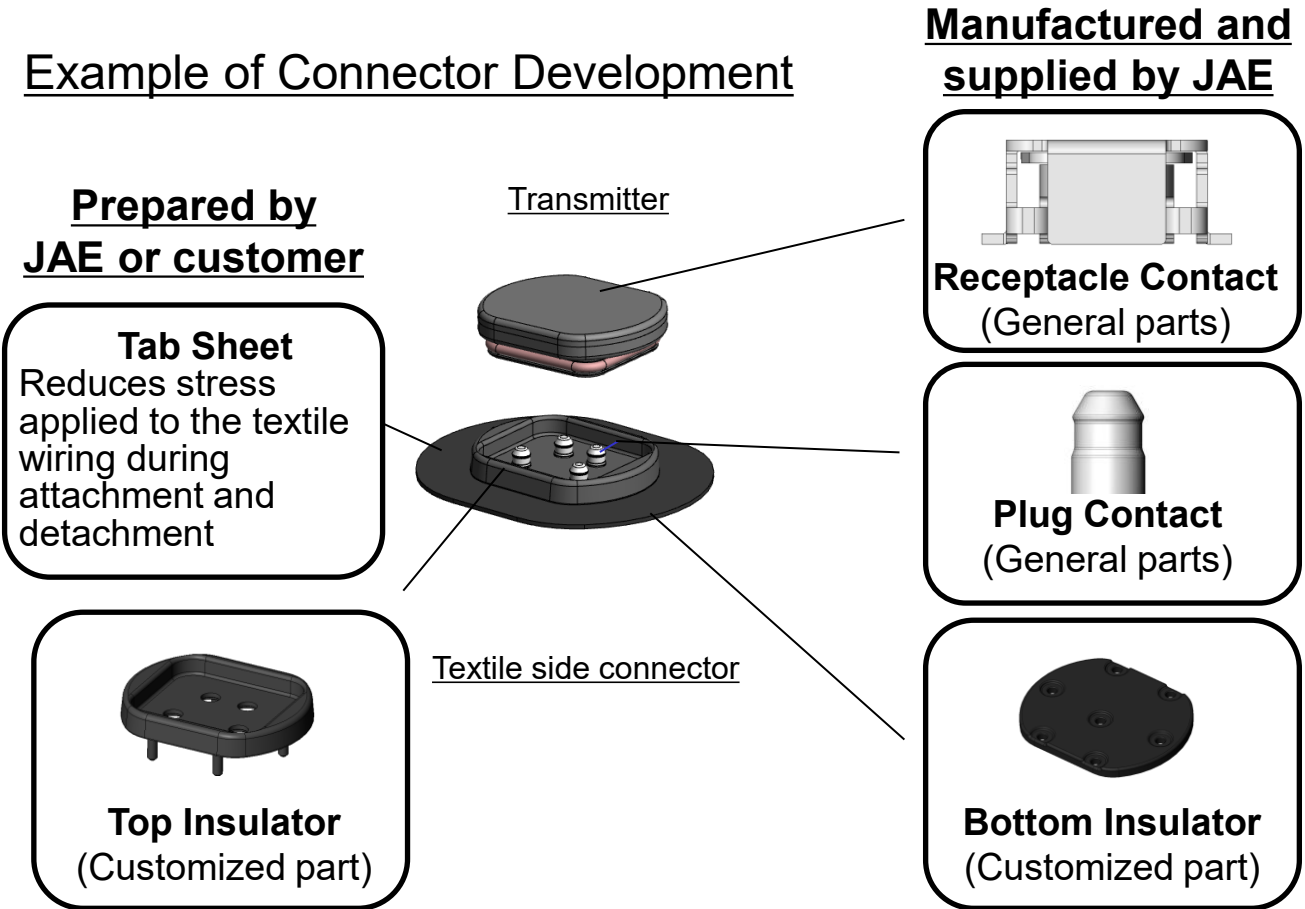
Connection (Board attachment type)

Components

Transmitter side: Receptacle contact is mounted to the surface of the printed circuit board inside transmitter.

Textile side: General parts and customized parts are sold as a kit to comply with various designs that use different materials and number of contacts.

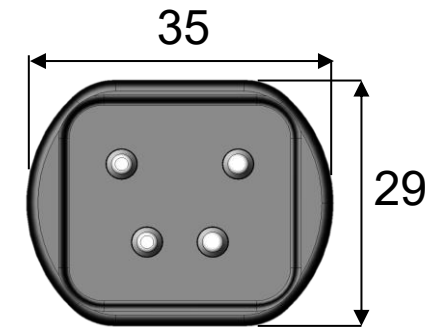
Example of Connector Development



Outer Dimensions

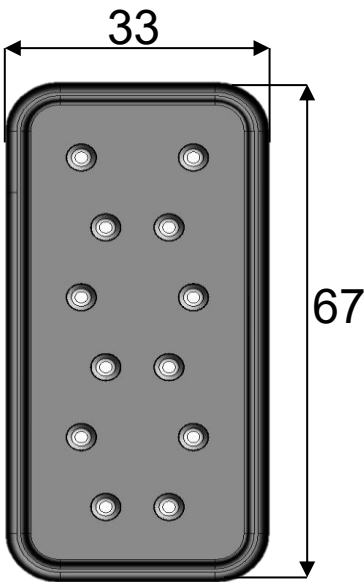
[mm]

Design example: 4 positions



Textile side connector

Design example: 12 positions



Textile side connector

Part Numbers and Product Drawings

Part Number	Drawing	Specification
RK01P001YZ1 Plug Contact	SJ122311	JACS-30414
RK01S001WZ2R1300 Receptacle Contact	SJ131092	

**Notice:**

1. The values specified in this brochure are only for reference. The products and their specifications are subject to change without notice. Contact our sales staff for further information before considering or ordering any of our products. For purchase, a product specification must be agreed upon.
2. Users are requested to provide protection circuits and redundancy circuits to ensure safety of the equipment, and sufficiently review the suitability of JAE's products to the equipment.
3. The products presented in this brochure are designed for the uses recommended below.  
We strongly suggest you contact our sales staff when considering use of any of the products in any other way than the recommended applications or for a specific use that requires an extremely high reliability.
- (1) Applications that require consultation:
- (i) Please contact us if you are considering use involving a quality assurance program that you specify or that is peculiar to the industry, such as:  
Automotive electrical components, train control, telecommunications devices (mainline), traffic light control, electric power, combustion control, fire prevention or security systems, disaster prevention equipment, etc.
- (ii) We may separately give you our support with a quality assurance program that you specify, when you think of a use such as :  
Aviation or space equipment, submarine repeaters, nuclear power control systems, medical equipment for life support, etc.
- (2) Recommended applications include:  
Computers, office appliances, telecommunications devices (terminals, mobile units), measuring equipment, audiovisual equipment, home electric appliances, factory automation equipment, etc.

\* The specifications in this brochure are subject to change without notice. Please contact JAE for information.