

AZIMUTHAL GAMMA CONTROLLER

A feature of the SMART DM

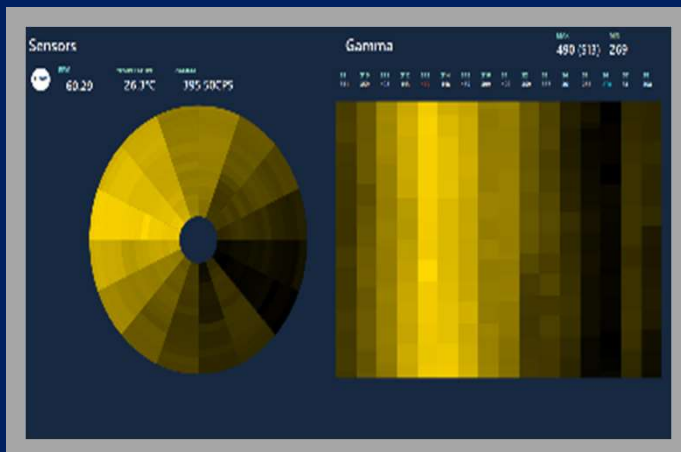


-Leading Customers in the Right Direction-

Benefits and Features

- Available as an upgrade to existing SMART DMs
- Accepts up to 3 gamma inputs (2 focused, 1 bulk)
- Compatibility with most gamma detectors
- High speed azimuthal binning
- High resolution recorded 16-bin azimuthal gamma data
- Configurable real-time parameters (U/D, Hot/Cold, 3 bin, 4 bin, etc.)
- No added length to the toolstring
- High temp reliability

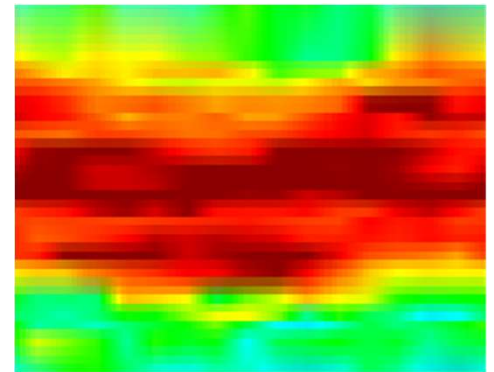
(utilizing the proven high temp reliability of the SMART DM)



When paired with a shielded gamma detector, a JAE SMART DM with the Azimuthal Gamma Controller feature enabled will produce azimuthal gamma measurements critical for today's geosteering applications. The Azimuthal Gamma Controller works by correlating incoming gamma readings with the direction the sensor is facing (toolface) when the counts were received. The Azimuthal Gamma Controller feature can be added to existing SMART DMs and will work with most shielded gamma sensors to provide both real-time and recorded azimuthal gamma data.

Technical Specifications

- 16 bin resolution (22.5 deg)
- Binning RPM:
 - Specification: +/- 150 RPM with +/- 1 bin error
 - Capability: +/- 400 RPM
- 255 CPS max for focused gamma
- 1000 CPS max for bulk gamma
- 2 μ sec min gamma pulse width



Logged Parameters

In addition to the regular SMART DM logs, the Azimuthal Gamma Controller logs:

- 16-Sector data
- Hot sector/Cold sector
- Binning toolface offset (updated after every survey)

Contact Us https://www.jae.com/en/Motion_Sensor_Control/

JAE Electronics, Inc. (USA)

1100 West Park One Dr.
Sugar Land, TX 77478 USA
Tel : +1 281 325 5760
support.aerospace@jae.com

JAE Europe, Ltd.

Royal Pavilion, Tower 3, First Floor, Wellesley Road,
Aldershot, Hampshire, GU11 1PZ, UK
Tel : +44 1252 55 11 00 Fax : +44 1252 55 11 10

Japan Aviation Electronics Industry, Ltd. (Japan)

Aerospace Sales Div.
1-19, Aobadai 3-chome, Meguro-ku, Tokyo 153-8539, Japan
Tel : +81-3-3780-2925 Fax : +81-3-3780-2945